

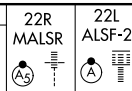
ILS or LOC RWY 22R

NEWARK LIBERTY INTL (EWR)

LOC/DME I-JNN	APP CRS	Rwy Idg	22R	22L
110.75	219°		9560	8206
Chan 44 (Y)		TDZE	10	11
		Apt Elev	17	17

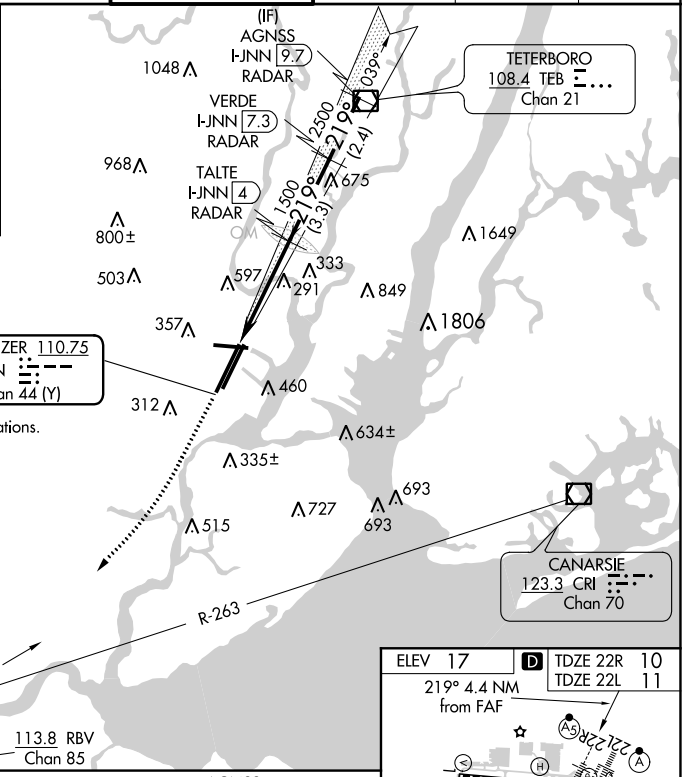
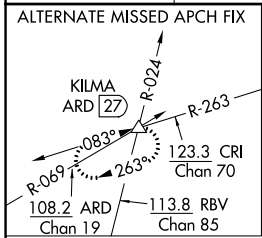
DME required. RADAR required for procedure entry.

- For inoperative ALSF-2, increase sidestep 22L Cat C visibility to 1½ mile. Inoperative table does not apply to sidestep 22L Cats A and B.
- When Circling to Rwy 29 at night, operational VGSI required, remain on or above VGSI glidepath until threshold.

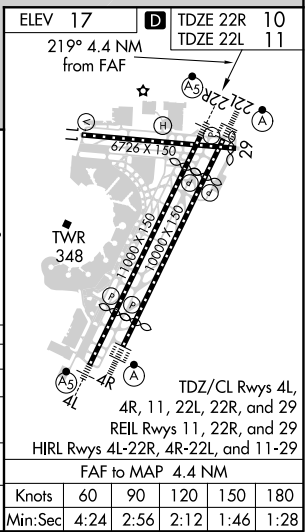
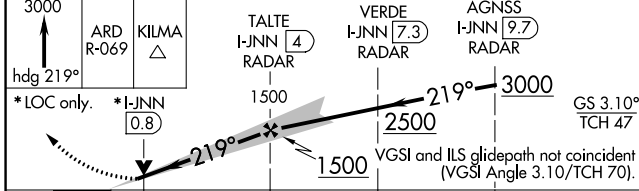
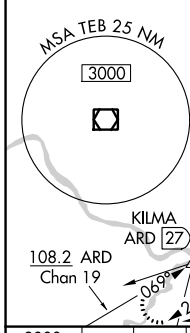


MISSED APPROACH: Climb to 3000 on heading 219° and on ARD VOR/DME R-069 to KILMA INT/ARD 27 DME and hold.

D-ATIS	NEW YORK APP CON	NEWARK TOWER	GND CON	CLNC DEL	CPDLC
115.7 134.825	128.55 379.9	118.3 257.6	121.8	118.85	



Disregard all marker beacon indications.



CATEGORY	A	B	C	D
S-ILS 22R	210/18 200 (200-½)			
S-LOC 22R	460/24	450 (500-½)	460/45	450 (500-¾)
SIDESTEP RWY 22L	560/50 549 (600-1)			560-1½ 549 (600-1½)
CIRCLING	760-1	820-1	900-2¾	900-3
	743 (800-1)	803 (900-1)	883 (900-2¾)	883 (900-3)

NE-2, 22 APR 2021 to 20 MAY 2021