

LOC/DME I-EWR <b>110.75</b> Chan 44 (Y)	APP CRS <b>039°</b>	Rwy Idg 4L <b>8460</b> 4R <b>8810</b> TDZE <b>10</b> <b>11</b> Apt Elev <b>17</b> <b>17</b>
---	------------------------	--

# ILS or LOC RWY 4L

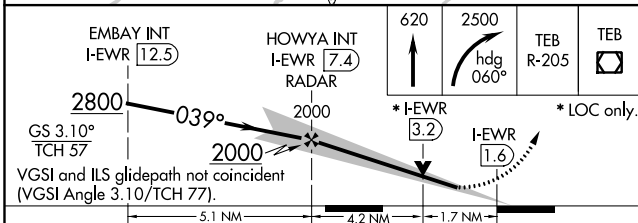
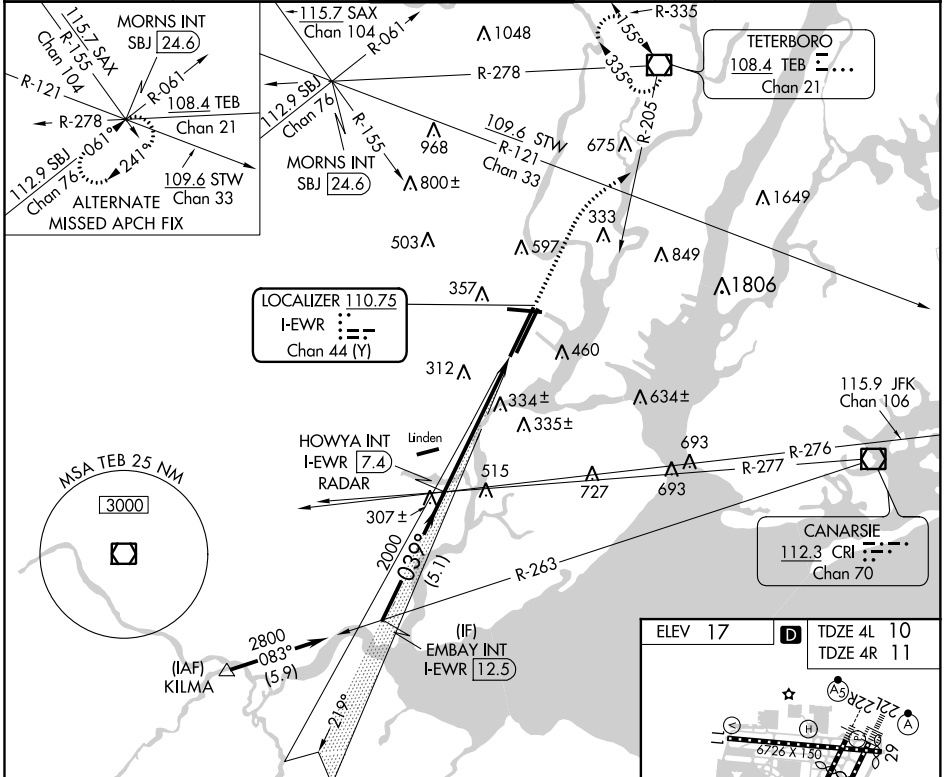
NEWARK LIBERTY INTL (EWR)

▼ For inoperative MALS/R, increase S-LOC 4L and sidestep 4R Cat C visibility to 1 1/4 mile. Inoperative table does not apply to sidestep Rwy 4R Cats A and B. When Circling to Rwy 29 at night, operational VGS/ required, remain on or above VGS/ glidepath until threshold.

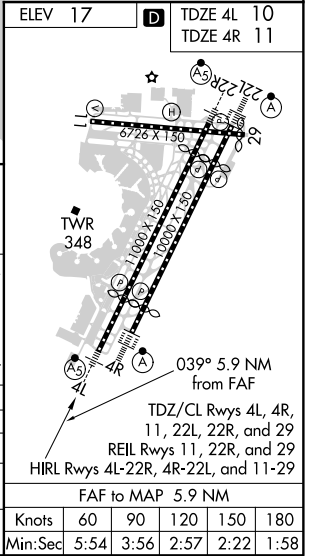
4L MALS/R 4R ALSF-2

MISSED APPROACH: Climb to 620 then climbing right turn to 2500 on heading 060° and TEB VOR/DME R-205 to TEB VOR/DME and hold.

D-ATIS <b>115.7 134.825</b>	NEW YORK APP CON <b>128.55 379.9</b>	NEWARK TOWER <b>118.3 257.6</b>	GND CON <b>121.8</b>	CLNC DEL <b>118.85</b>	CPDLC
--------------------------------	---	------------------------------------	-------------------------	---------------------------	-------



CATEGORY	A	B	C	D
S-ILS 4L	210/18 200 (200-1/2)			
S-LOC 4L	620/24	610 (700-1/2)	620-1 3/8	610 (700-1 3/8)
SIDESTEP 4R	620/50	609 (700-1)	620-1 3/8	620-1 1/2
CIRCLING	760-1	820-1	900-2 3/4	900-3
	743 (800-1)	803 (900-1)	883 (900-2 3/4)	883 (900-3)



NE-2, 22 APR 2021 to 20 MAY 2021

NE-2, 22 APR 2021 to 20 MAY 2021