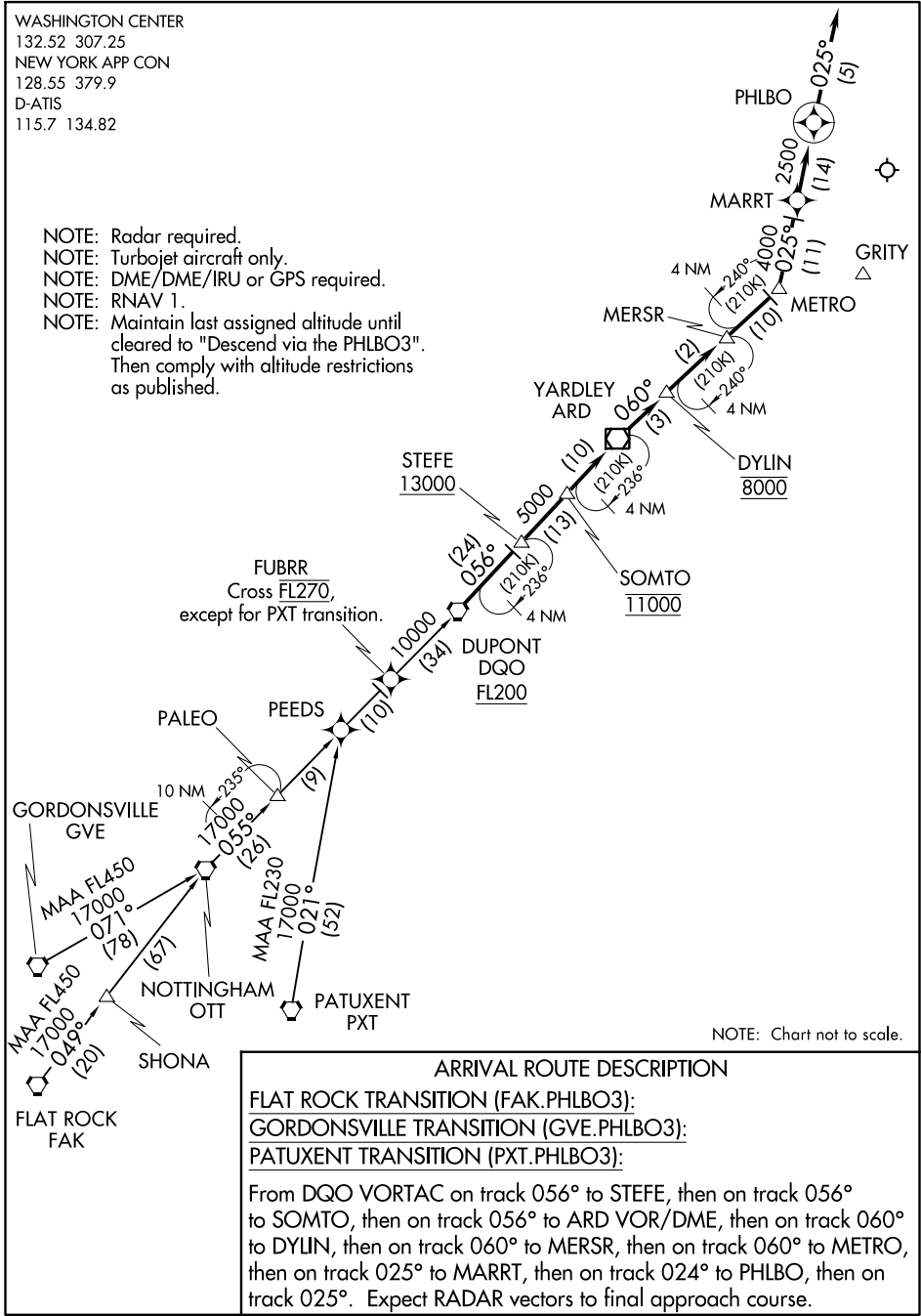


# PHLBO THREE ARRIVAL (RNAV)

WASHINGTON CENTER  
132.52 307.25  
NEW YORK APP CON  
128.55 379.9  
D-ATIS  
115.7 134.82

- NOTE: Radar required.
- NOTE: Turbojet aircraft only.
- NOTE: DME/DME/IRU or GPS required.
- NOTE: RNAV 1.
- NOTE: Maintain last assigned altitude until cleared to "Descend via the PHLBO3". Then comply with altitude restrictions as published.



NOTE: Chart not to scale.

**ARRIVAL ROUTE DESCRIPTION**

FLAT ROCK TRANSITION (FAK.PHLBO3):  
GORDONSVILLE TRANSITION (GVE.PHLBO3):  
PATUXENT TRANSITION (PXT.PHLBO3):

From DQO VORTAC on track 056° to STEFE, then on track 056° to SOMTO, then on track 056° to ARD VOR/DME, then on track 060° to DYLIN, then on track 060° to MERSR, then on track 060° to METRO, then on track 025° to MARRT, then on track 024° to PHLBO, then on track 025°. Expect RADAR vectors to final approach course.

NE-2, 22 APR 2021 to 20 MAY 2021

NE-2, 22 APR 2021 to 20 MAY 2021

# PHLBO THREE ARRIVAL (RNAV)