

WAAS CH 77524 W22B	APP CRS 219°	Rwy Idg TDZE Apt Elev	9560 10 17
--	------------------------	-----------------------------	---------------------------------------

RNAV (GPS) RWY 22R

NEWARK LIBERTY INTL (EWR)

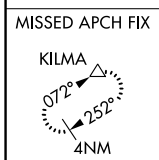
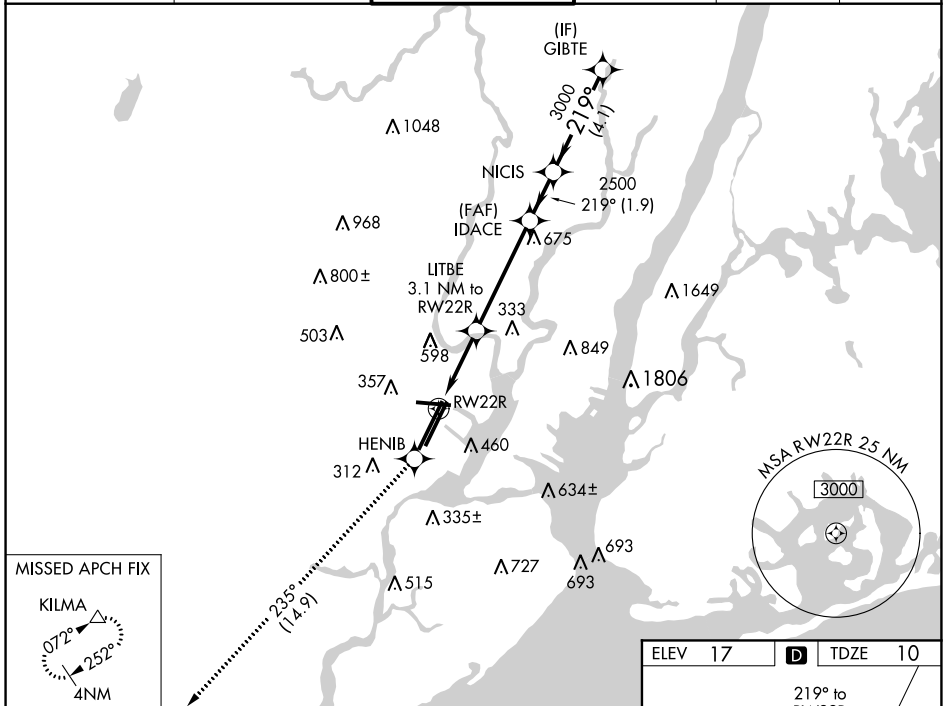
RNP APCH.

For inop ALS, increase LPV visibility to RVR 6000 all Cats. When Circling to Rwy 29 at night, operational VGSI required, remain on or above VGSI glidepath until threshold.

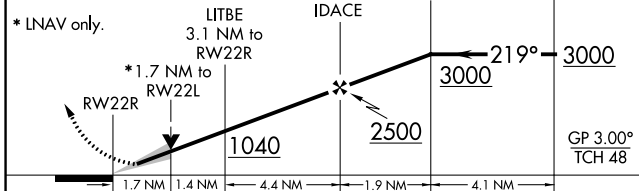


MISSED APPROACH: Climb to 3000 direct HENIB and on track 235° to KILMA and hold.

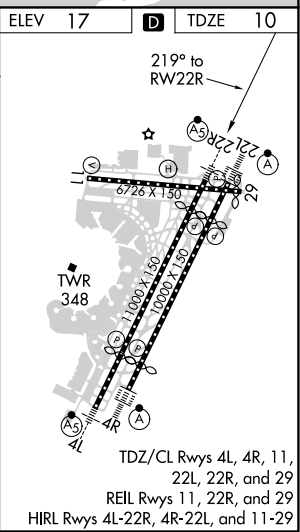
D-ATIS 115.7 134.825	NEW YORK APP CON 128.55 379.9	NEWARK TOWER 118.3 257.6	GND CON 121.8	CLNC DEL 118.85	CPDLC
--------------------------------	---	------------------------------------	-------------------------	---------------------------	-------



3000 HENIB tr 235° KILMA
 VGSI and RNAV glidepath not coincident (VGSI Angle 3.10/TCH 70).



CATEGORY	A	B	C	D
LPV DA		361/40	351 (400-¾)	
LNAV/VNAV DA		NA		
LNAV MDA	620/24	610 (700-½)	620/60 610 (700-1¼)	620-1½ 610 (700-1½)
CIRCLING	760-1¼ 743 (800-1¼)	820-1¼ 803 (800-1¼)	900-2¾ 883 (900-2¾)	900-3 883 (900-3)



RNAV (GPS) RWY 22R

NE-2, 22 APR 2021 to 20 MAY 2021

NE-2, 22 APR 2021 to 20 MAY 2021