

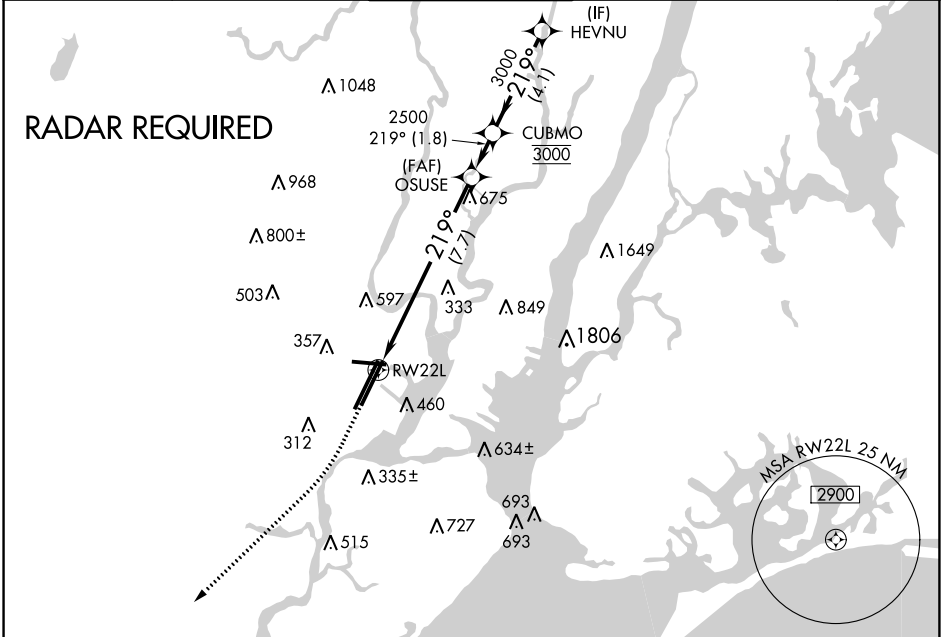
APP CRS 219°	Rwy Idg 8207
	TDZE 11
	Apt Elev 17

RNAV (RNP) Y RWY 22L

NEWARK LIBERTY INTL (EWR)

<p>For uncompensated Baro-VNAV systems, procedure NA below -13°C (9°F) or above 54°C (130°F). GPS required.</p>	<p>ALSIF-2</p>	<p>MISSED APPROACH: Climb to 600 then climbing right turn to 3000 direct KILMA and hold.</p>

D-ATIS 115.7 134.825	NEW YORK APP CON 128.55 379.9	NEWARK TOWER 118.3 257.6	GND CON 121.8	CLNC DEL 118.85	CPDLC
--------------------------------	---	------------------------------------	-------------------------	---------------------------	-------

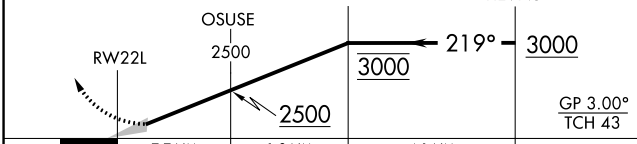


NE-2, 22 APR 2021 to 20 MAY 2021

NE-2, 22 APR 2021 to 20 MAY 2021

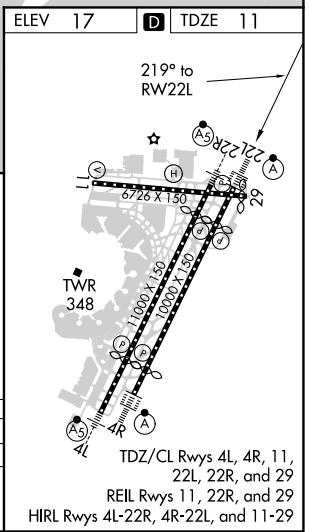
ELEV 17	TDZE 11
---------	---------

600 3000 KILMA VGSI and RNAV glidepath not coincident (VGSI Angle 3.00/TCH 60)



CATEGORY	A	B	C	D
RNP 0.30 DA	436/50		425 (500-1)	

AUTHORIZATION REQUIRED



TDZ/CL Rwy's 4L, 4R, 11, 22L, 22R, and 29
REIL Rwy's 11, 22R, and 29
HIRL Rwy's 4L-22R, 4R-22L, and 11-29