

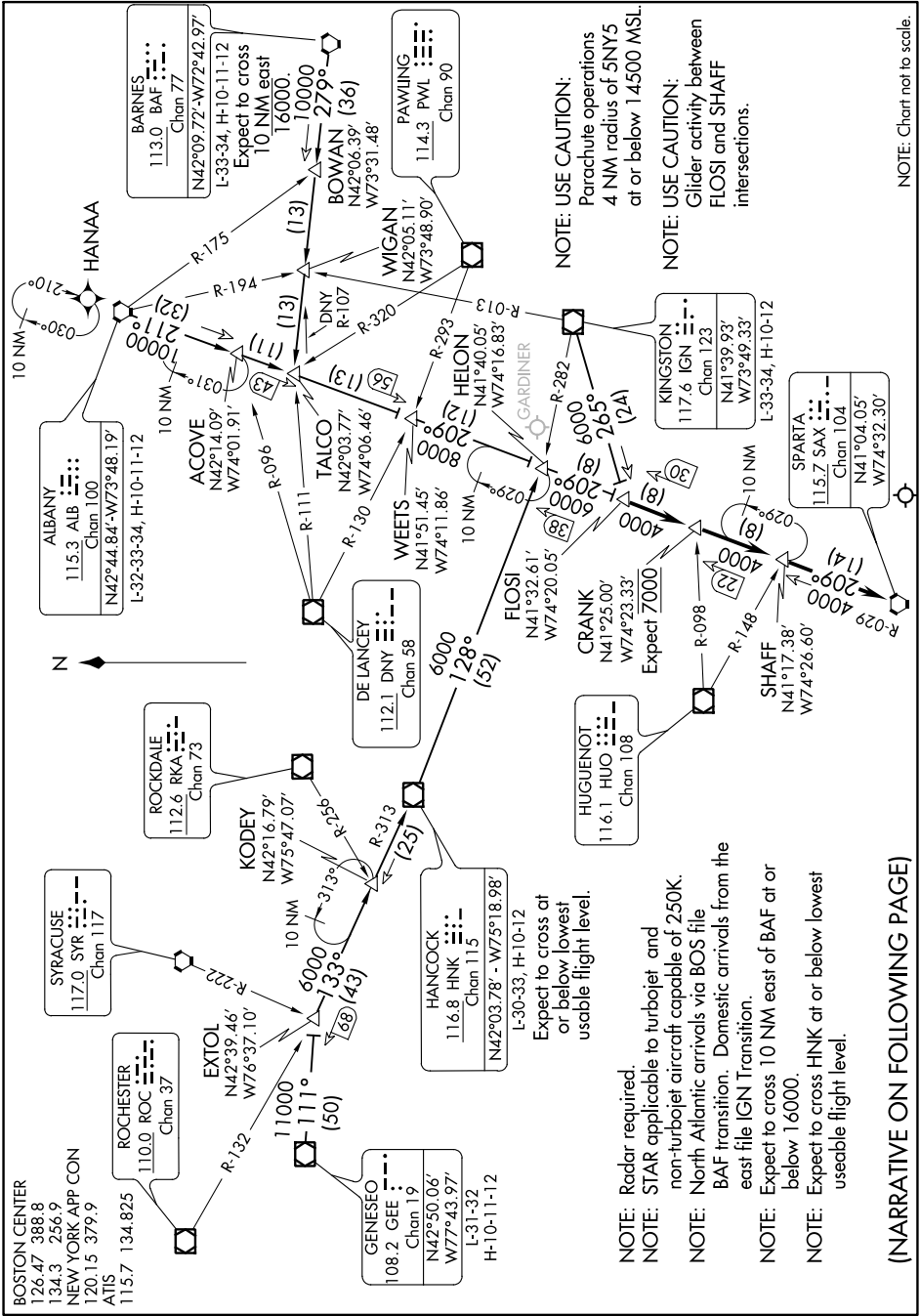
SHAFF SEVEN ARRIVAL

AL-285 (FAA)

NEWARK LIBERTY INTL (EWR)

NEWARK, NEW JERSEY

NE-2, 22 APR 2021 to 20 MAY 2021



NOTE: Chart not to scale.

NOTE: USE CAUTION:  
Parachute operations  
4 NM radius of 5NY5  
at or below 14500 MSL.

NOTE: USE CAUTION:  
Glider activity between  
FLOSI and SHAFF  
intersections.

- NOTE: Radar required.
- NOTE: STAR applicable to turbojet and non-turbojet aircraft capable of 250K.
- NOTE: North Atlantic arrivals via BOS file BAF transition. Domestic arrivals from the east file IGN Transition.
- NOTE: Expect to cross 10 NM east of BAF at or below 16000.
- NOTE: Expect to cross HNK at or below lowest useable flight level.

NE-2, 22 APR 2021 to 20 MAY 2021

(NARRATIVE ON FOLLOWING PAGE)