

OKLAHOMA CITY, OKLAHOMA

HI-ILS or LOC/DME Y RWY 18

LOC I-FRJ 111.3	APCH CRS 177°	Rwy ldg 11,100 TDZE 1267 Arpt Elev 1291
---------------------------	-------------------------	--

JAL-299 [USAF]

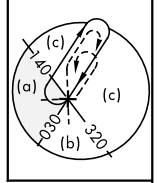
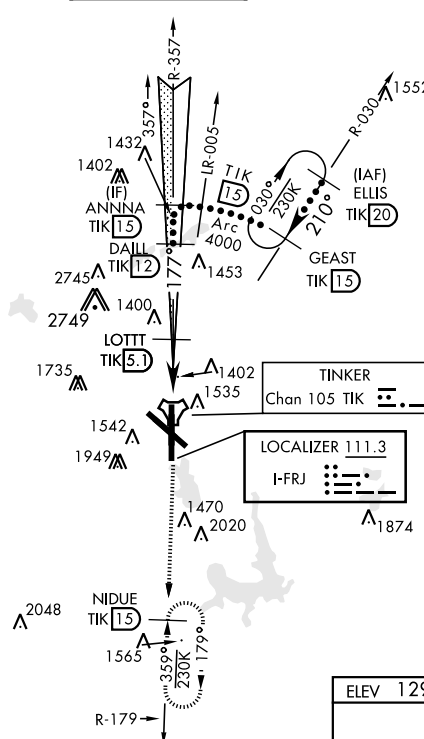
TINKER AFB (KTIK)

▼ * When ALS inop, increase CAT CDE RVR to 55 and vis to 1 mile.
 ** CAT E circling NA in sector S of Rwy 13-31 and W of RWY 18. Circling NA to Rwy 18.



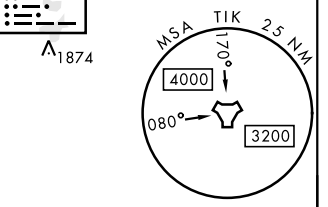
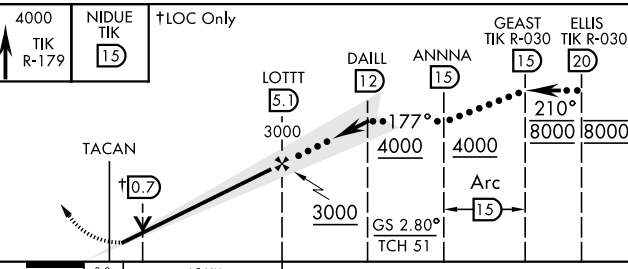
MISSED APPROACH: Climb to 4000 on TIK TACAN R-179 to NIDUE and hold.

ATIS * 270.1	OKE CITY APP CON 124.2 336.4	TINKER TOWER 124.45 251.05	GND CON 121.8 275.8	CLNC DEL 119.7 335.8	ASR
------------------------	--	--------------------------------------	-------------------------------	--------------------------------	-----

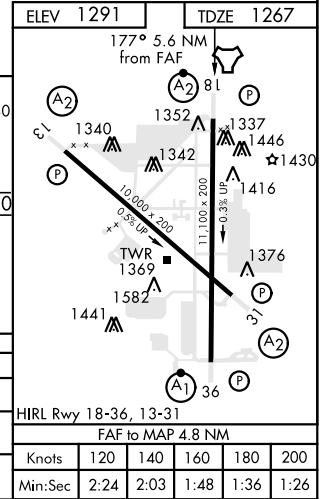


Localizer unusable from TIK 0.1 DME to rwy threshold.
 Localizer NA beyond 15° right of course.

EMERG SAFE ALT 100 NM 4700



CATEGORY	C		D		E	
	S-ILS 18		S-LOC 18 *		CIRCLING **	
	1467/40	200	(200-3/4)	1640/40	373	(400-3/4)
	1960-1 3/4	669 (700-1 3/4)	1960-2	669 (700-2)	1960-2 1/4	669 (700-2 1/4)



OKLAHOMA CITY, OKLAHOMA

35°25'N-97°23'W

TINKER AFB (KTIK)

Amtd 6 23APR20

HI-ILS or LOC/DME Y RWY 18

SC-1, 22 APR 2021 to 20 MAY 2021

SC-1, 22 APR 2021 to 20 MAY 2021