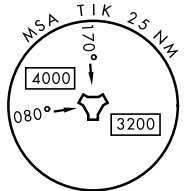
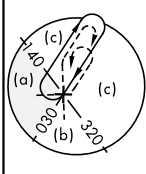
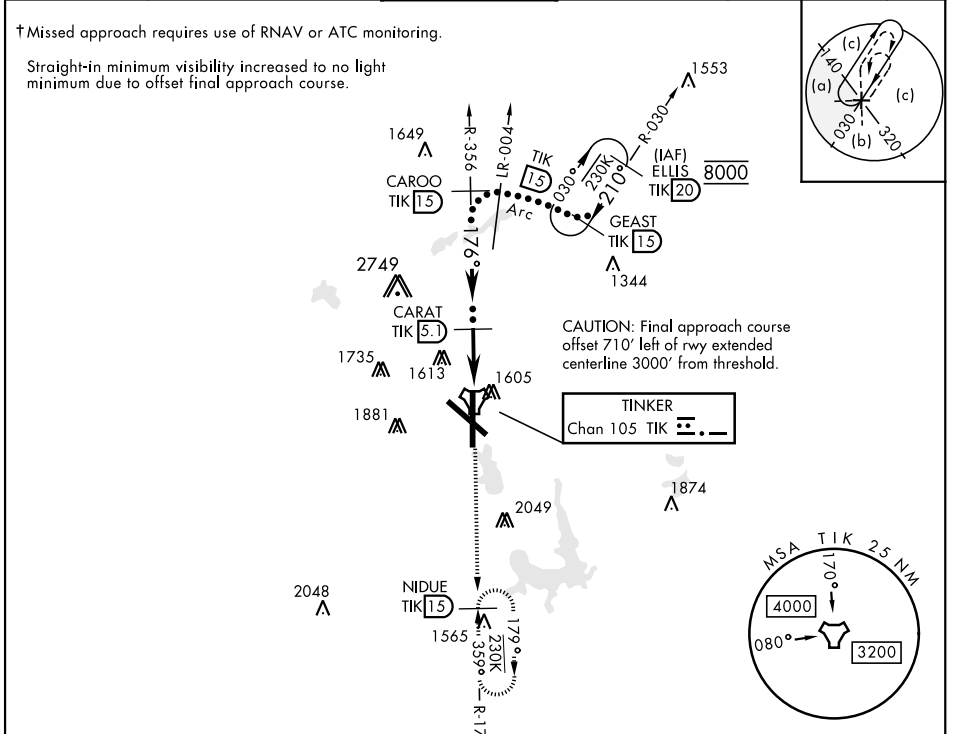


HI-TACAN Y RWY 18

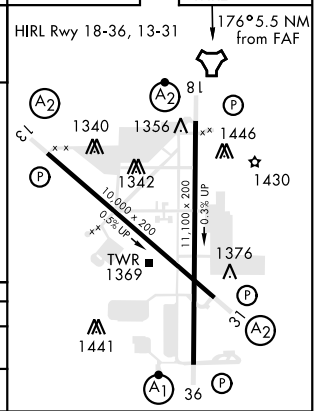
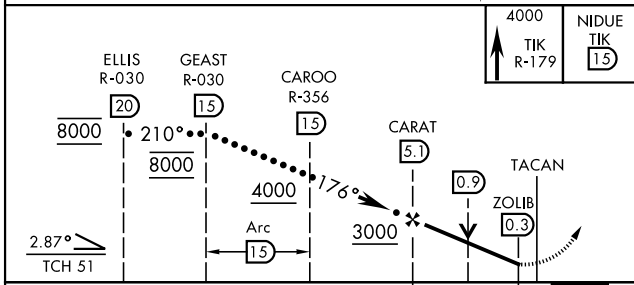
TACAN TIK Chan 105	APCH CRS 176°	Rwy Idg 11,100 THRE 1260 Arprt Elev 1291	JAL-299 [USAF]	TINKER AFB (KTIK)
------------------------------	-------------------------	---	----------------	-------------------

* CAT E circling not authorized in sector S of Rwy 13-31. Circling not authorized to Rwy 18. SALS
† MISSED APPROACH: Climb to 4000 on TIK TACAN R-179 to NIDUE and hold.

ATIS ★ 270.1	OKE CITY APP CON 124.2 336.4	TINKER TOWER 124.45 251.05	GND CON 121.8 275.8	CLNC DEL 119.7 335.8	ASR
------------------------	--	--------------------------------------	-------------------------------	--------------------------------	-----



EMERG SAFE ALT 100 NM 4700



	ELEV 1291	THRE 1260	
CATEGORY	C	D	E
S-18	1720/55	460	(500-1)
CIRCLING *	1960-1 $\frac{3}{4}$ 669 (700-1 $\frac{3}{4}$)	1960-2 669 (700-2)	1960-2 $\frac{1}{4}$ 669 (700-2 $\frac{1}{4}$)

OKLAHOMA CITY, OKLAHOMA 35°25'N-97°23'W TINKER AFB (KTIK)

HI-TACAN Y RWY 18



SC-1, 22 APR 2021 to 20 MAY 2021

SC-1, 22 APR 2021 to 20 MAY 2021