

OKLAHOMA CITY, OKLAHOMA

# HI-TACAN Y RWY 36

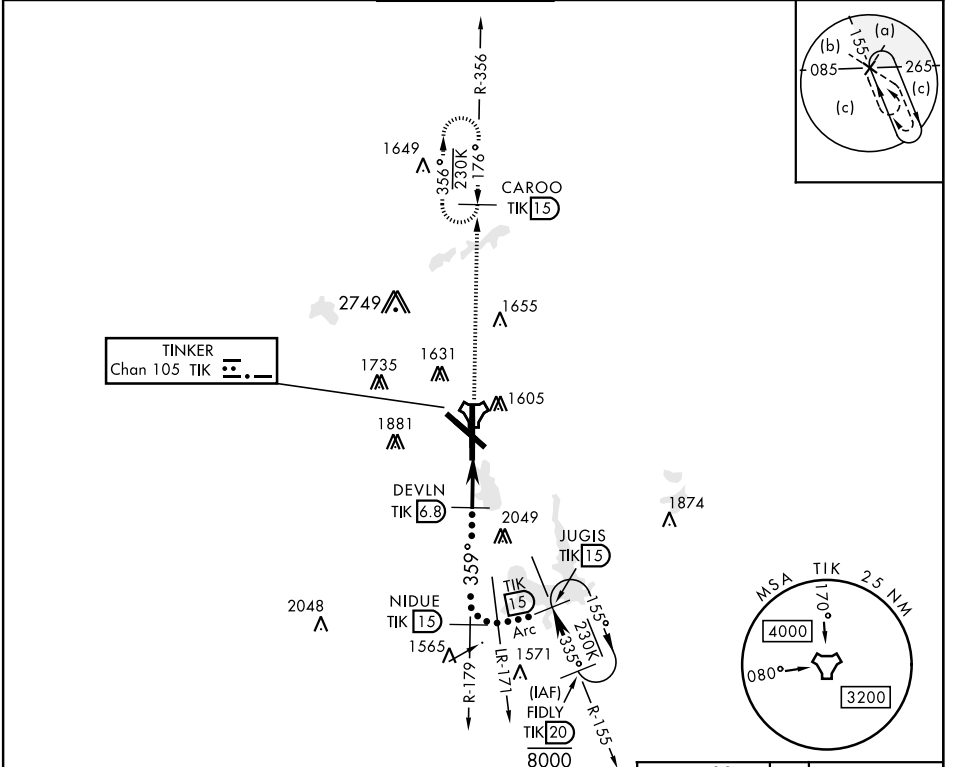
TACAN TIK Chan <b>105</b>	APCH CRS <b>359°</b>	Rwy ldg <b>11,100</b> TDZE <b>1291</b> Arprt Elev <b>1291</b>
------------------------------	-------------------------	---

JAL-299 [USAF]

TINKER AFB (KTIK)

<p>▼ * When ALS inop, increase CAT CDE vis by ½ mile. ** CAT E circling not authorized in sector S of Rwy 13-31. Circling not authorized to Rwy 18.</p>	<p>ALSF-1 <b>(A1)</b></p>	<p>MISSED APPROACH: Climb to 4000 on TIK TACAN R-356 to CAROO and hold.</p>
---	-------------------------------	---

ATIS★ <b>270.1</b>	OKE CITY APP CON <b>120.45 288.325</b>	TINKER TOWER <b>124.45 251.05</b>	GND CON <b>121.8 275.8</b>	CLNC DEL <b>119.7 335.8</b>	ASR
-----------------------	---	--------------------------------------	-------------------------------	--------------------------------	-----



EMERG SAFE ALT 100 NM 4700

<p>FIDLY R-155 <b>(20)</b></p> <p>JUGIS R-155 <b>(15)</b></p> <p>NIDUE R-179 <b>(15)</b></p> <p>DEVLN <b>(6.8)</b></p> <p>REPDE <b>(2.8)</b></p> <p>TACAN</p> <p>VGS1 and descent angles not coincident.</p> <p>4000 TIK R-356 CAROO TIK 15</p> <p>3.04° TCH 52</p> <p>8000</p> <p>335°</p> <p>4000</p> <p>359°</p> <p>2800</p> <p>4 NM</p> <p>0.5</p>		<p>ELEV 1291</p> <p>TDZE 1291</p>	
CATEGORY	C	D	E
S-36 *	1720/40	429	(500-¾)
CIRCLING **	1960-1¾ 669 (700-1¾)	1960-2 669 (700-2)	1960-2½ 669 (700-2½)
<p>HIRL Rwy 18-36, 13-31</p> <p>359° to TACAN</p>		<p>1340</p> <p>1356</p> <p>1446</p> <p>1430</p> <p>1376</p> <p>1441</p> <p>1369</p> <p>10,000-200</p> <p>0.3% DF</p> <p>0.02 x 0.01 T.I.</p> <p>NMDD 3% 0</p> <p>81</p> <p>36</p>	

OKLAHOMA CITY, OKLAHOMA

35° 25' N-97° 23' W

TINKER AFB (KTIK)

Amtd 4 23APR20

# HI-TACAN Y RWY 36

SC-1, 22 APR 2021 to 20 MAY 2021

SC-1, 22 APR 2021 to 20 MAY 2021