

OKLAHOMA CITY, OKLAHOMA

ILS or LOC/DME Z RWY 18

LOC I-FRJ 111.3	APCH CRS 177°	Rwy Idg 11,100 TDZE 1267 Arprt Elev 1291
---------------------------	-------------------------	---

AL-299 [USAF]

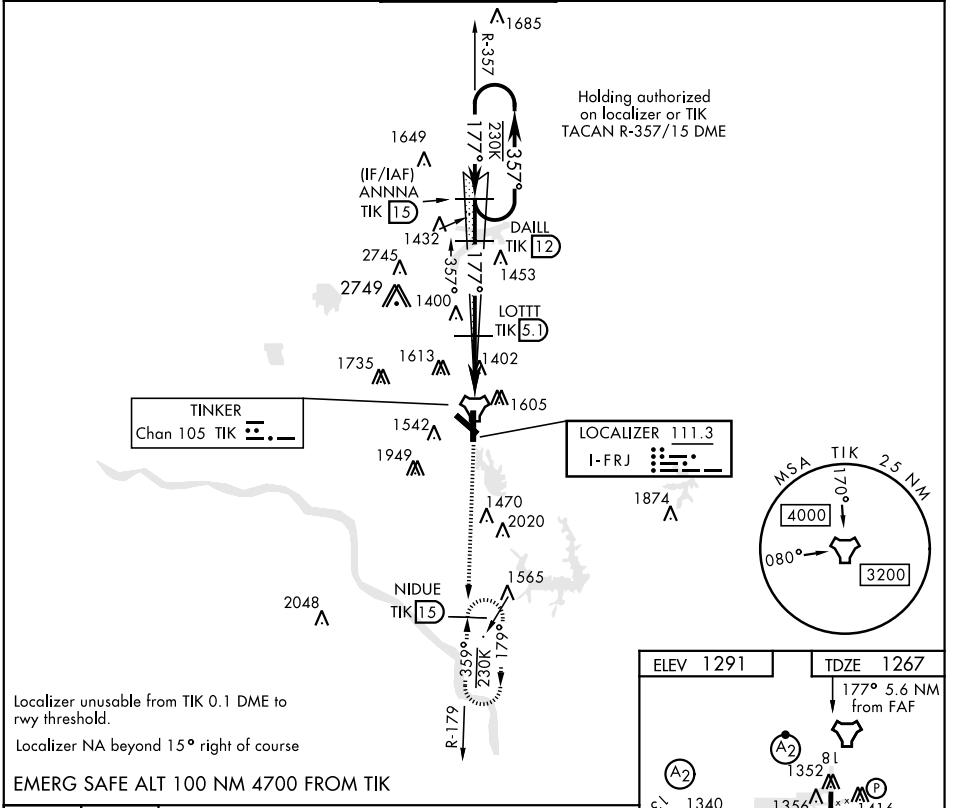
TINKER AFB (KTIK)

▼ * When ALS inop, increase all CAT to 55 and vis to 1 mile.
 ** CAT E Circling NA in sector S of Rwy 13-31 and W of Rwy 18-36.
 Circling NA to Rwy 18.

SALS

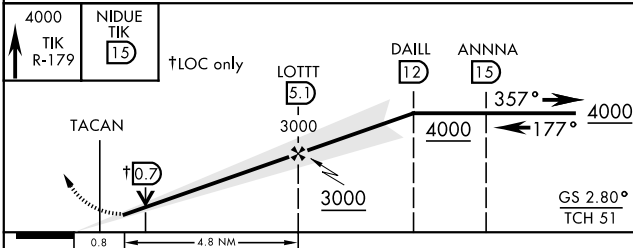
MISSED APPROACH: Climb to 4000 on TIK TACAN R-179 to NIDUE and hold.

ATIS * 270.1	OKE CITY APP CON 124.2 336.4	TINKER TOWER 124.45 251.05	GND CON 121.8 275.8	CLNC DEL 119.7 335.8	ASR
------------------------	--	--------------------------------------	-------------------------------	--------------------------------	-----

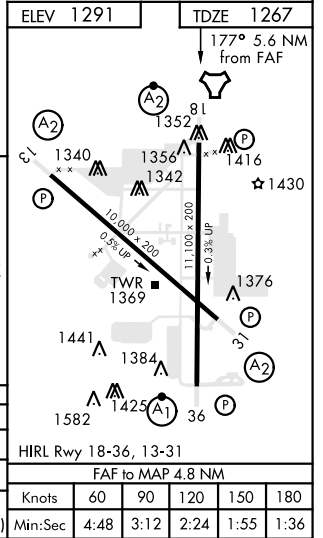


Localizer unusable from TIK 0.1 DME to rwy threshold.
 Localizer NA beyond 15° right of course

EMERG SAFE ALT 100 NM 4700 FROM TIK



CATEGORY	A	B	C	D	E
S-ILS 18	1467/40	200	(200-¾)		
S-LOC 18 *	1640/40	373	(400-¾)		
CIRCLING **	1900-1 609 (700-1)	1960-1¾ 669 (700-1¾)	1960-2 669 (700-2)	1960-2¼ 669 (700-2¼)	



OKLAHOMA CITY, OKLAHOMA

35°25'N-97°23'W

TINKER AFB (KTIK)

Amtd 5 26MAY16

ILS or LOC/DME Z RWY 18

SC-1, 22 APR 2021 to 20 MAY 2021

SC-1, 22 APR 2021 to 20 MAY 2021