

LOC/DME RWY 31

LOC I-PLH 111.7	APCH CRS 308°	Rwy ldg 10,000 TDZE 1276 Arprt Elev 1291	AL-299 [USAF]	TINKER AFB (KTIK)
---------------------------	-------------------------	---	---------------	-------------------

▼ * When ALS inop, increase CAT AB RVR to 55 and vis to 1 mile, CAT CDE vis to 1 $\frac{1}{2}$.
 ** CAT E Circling not authorized in sector S of Rwy 13-31 and W of Rwy 18-36.

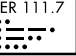
SALS
A2

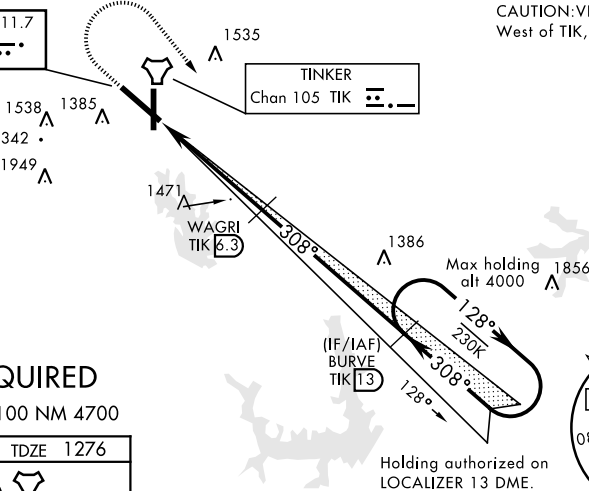

† MISSED APPROACH: Climb straight ahead to 2500, then turn right to 4000 direct I-PLH and TIK 13 DME (BURVE) and hold.

ATIS ★ 270.1	OKE CITY APP CON 120.45 288.325	TINKER TOWER 124.45 251.05	GND CON 121.8 275.8	CLNC DEL 119.7 335.8	ASR
------------------------	---	--------------------------------------	-------------------------------	--------------------------------	-----

When VGSI inop, procedure NA at night † Missed approach requires use of RNAV or ATC radar monitoring.

2745 

LOCALIZER 111.7
I-PLH 

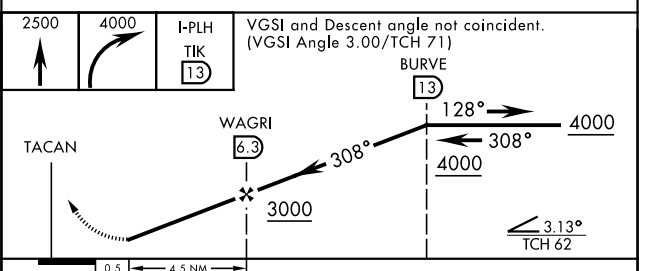
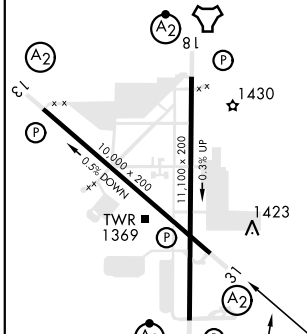


CAUTION: VFR flyway West of TIK, sfc to 3000.

RADAR REQUIRED

EMERG SAFE ALT 100 NM 4700

ELEV 1291	TDZE 1276
-----------	-----------



CATEGORY	A	B	C	D	E
S-LOC 31*	1740/50 464 (500-1)		1740/60 464 (500-1 $\frac{1}{2}$)		
CIRCLING**	1840-1 549 (600-1)		1960-1 $\frac{3}{4}$ 669 (700-1 $\frac{3}{4}$)	1980-2 $\frac{1}{4}$ 689 (700-2 $\frac{1}{4}$)	1960-2 $\frac{1}{4}$ 669 (700-2 $\frac{1}{4}$)

LOC/DME RWY 31

SC-1, 22 APR 2021 to 20 MAY 2021

SC-1, 22 APR 2021 to 20 MAY 2021