

OKLAHOMA CITY, OKLAHOMA

RNAV (GPS) RWY 18

APCH CRS 176°	Rwy Idg THRE Arpt Elev	11,100 1260 1291
------------------	------------------------------	------------------------

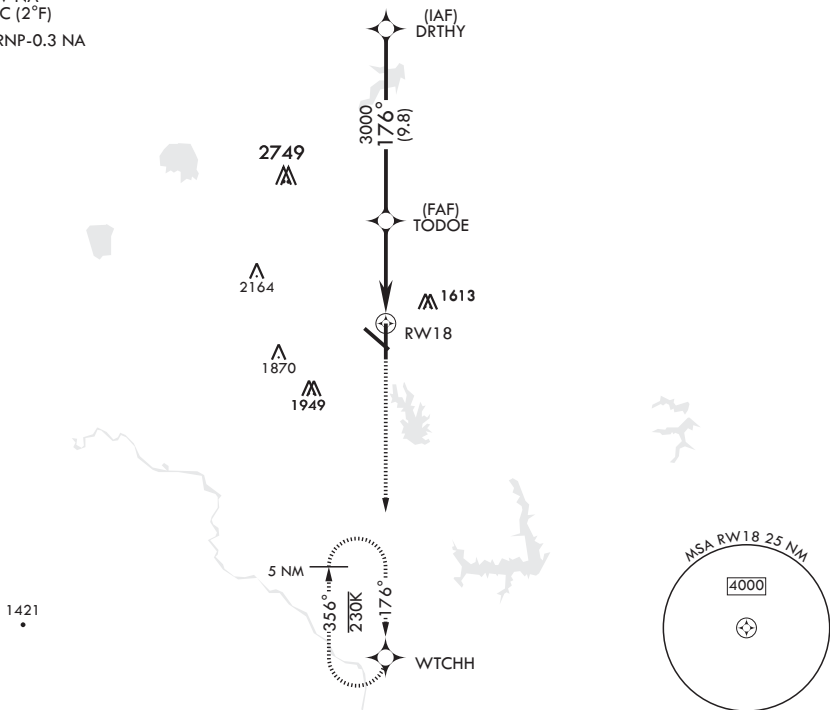
AL-299 (USAF)

TINKER AFB (KTIK)

V * Cat E Circling not authorized in sector S of Rwy 13-31 and W of Rwy 18-36. **SALS** MISSED APPROACH: Climb to 4000 direct WTCHH waypoint and hold.

ATIS★ 270.1	OKE CITY APP CON 124.2 336.4	TOWER 124.45 251.05	GND CON 121.8 275.8	CLNC DEL 119.7 335.8	ASR
----------------	---------------------------------	------------------------	------------------------	-------------------------	-----

For uncompensated Baro-VNAV systems, LNAV/VNAV NA below -17°C (2°F)
DME/DME RNP-0.3 NA



EMERG SAFE ALT 100 NM 4700 FROM RWY 18

DRTHY	VGS1 and descent angles not coincident.		4000	WTCHH	ELEV 1291	THRE 1260
4000	176°		↑	✦	↑ NAV only	
GP 3.00° TCH 50	3000		↑ 1.4 NM to RWY 18		1429	
5.2 NM			8 L		1340 1356	
CATEGORY			A		B	
LNAV/VNAV DA			1720-1¼		460 (500-1¼)	
LNAV MDA			1720/40 460 (500-¾)		1720/55 460 (500-1)	
CIRCLING*			1820-1 529 (600-1)		2000-2 709 (800-2)	
			2040-2½ 749 (800-2½)		2040-2¾ 749 (800-2¾)	
			1441		1376	
			1425		1384	
			36		A1	
			TWR 1369		1000 x 200	
			0.3% UP		11,100 x 200	
			0.3% UP		-0.3% UP	
			A2		A2	
			A2		A2	

HIRL all Rwys

OKLAHOMA CITY, OKLAHOMA

35°25'N - 97°23'W

TINKER AFB (KTIK)

Orig 14SEP17

RNAV (GPS) RWY 18

SC-1, 22 APR 2021 to 20 MAY 2021

SC-1, 22 APR 2021 to 20 MAY 2021