

OKLAHOMA CITY, OKLAHOMA

# RNAV (GPS) RWY 36

APCH CRS <b>356°</b>	Rwy Idg <b>11,100</b>
	THRE <b>1291</b>
	Arpt Elev <b>1291</b>

AL-299 (USAF)

TINKER AFB (KTIK)

**⚠** \* Cat E Circling not authorized in sector S of Rwy 13-31 and W of Rwy 18-36.

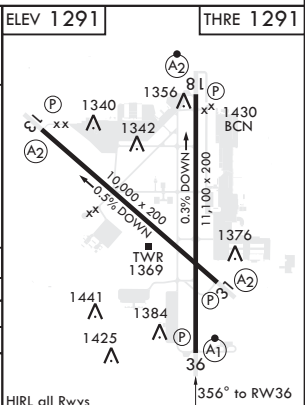
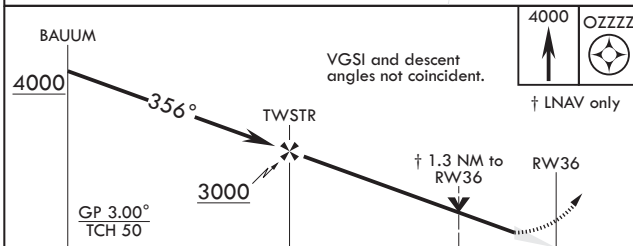


MISSED APPROACH: Climb to 4000 direct OZZZZ waypoint and hold.

ATIS ★ <b>270.1</b>	OKE CITY APP CON/DEP CON <b>124.2 336.4</b>	TOWER <b>124.45 251.05</b>	GND CON <b>121.8 275.8</b>	CLNC DEL <b>119.7 335.8</b>	ASR
------------------------	--	-------------------------------	-------------------------------	--------------------------------	-----

For uncompensated Baro-VNAV systems, LNAV/VNAV NA below -17°C (2°F)

DME/DME RNP-0.3 NA



CATEGORY	A	B	C	D	E
LNAV/VNAV DA	1739/53		448	(500-1)	
LNAV MDA	1740/24 449 (500-1/2)		1740/45	449	(500-7/8)
CIRCLING*	1820-1 529 (600-1)		2000-2 709 (800-2)	2040-2 749 (800-2 1/2)	2040-2 749 (800-2 3/4)

OKLAHOMA CITY, OKLAHOMA  
 Orig 07MAR13

35°25'N - 97°23'W

TINKER AFB (KTIK)

# RNAV (GPS) RWY 36

SC-1, 22 APR 2021 to 20 MAY 2021

SC-1, 22 APR 2021 to 20 MAY 2021