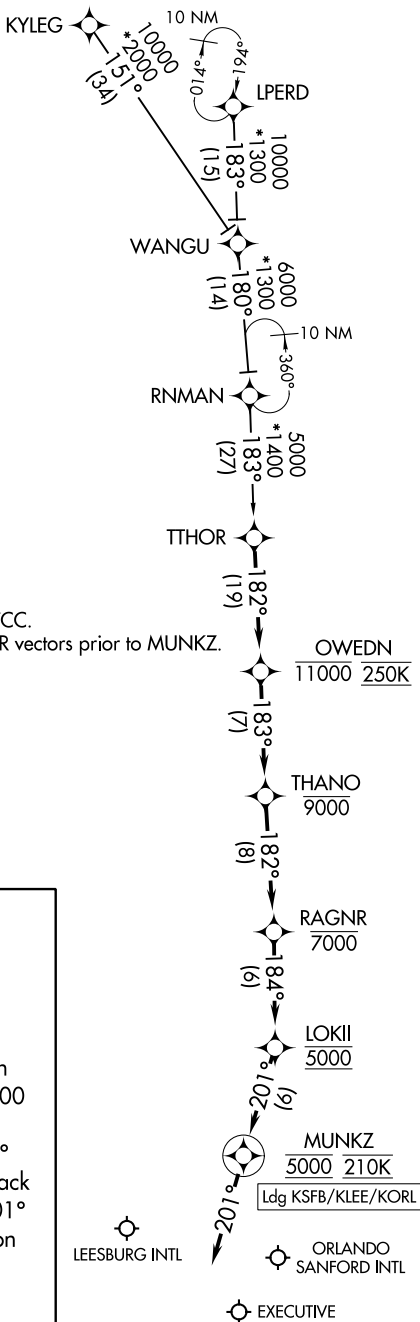


TTHOR ONE ARRIVAL (RNAV)

ORLANDO, FLORIDA

ORLANDO APP CON
 119.775 351.9
 DAYTONA APP CON
 118.85 353.825
 ORL ATIS
 127.25
 SFB ATIS
 125.975



- NOTE: RADAR required.
- NOTE: RNAV 1.
- NOTE: DME/DME/IRU or GPS required.
- NOTE: Expect "descend via" clearance from ARTCC.
- NOTE: Landing ORL, SFB and LEE, expect RADAR vectors prior to MUNKZ.
- NOTE: Jet and turboprop aircraft only.

NOTE: Chart not to scale.

ARRIVAL ROUTE DESCRIPTION

KYLEG TRANSITION (KYLEG.TTHOR1)

LPERD TRANSITION (LPERD.TTHOR1)

LANDING KSFb/KLEE/KORL: From TTHOR on track 182° to cross OWEDN at or below 11000 and at 250K, then on track 183° to cross THANO at or below 9000, then on track 182° to cross RAGNR at or below 7000, then on track 184° to cross LOKII at 5000, then on track 201° to cross MUNKZ at 5000 and at 210K, then on track 201°. Expect RADAR vectors to final approach course.

TTHOR ONE ARRIVAL (RNAV)

ORLANDO, FLORIDA