

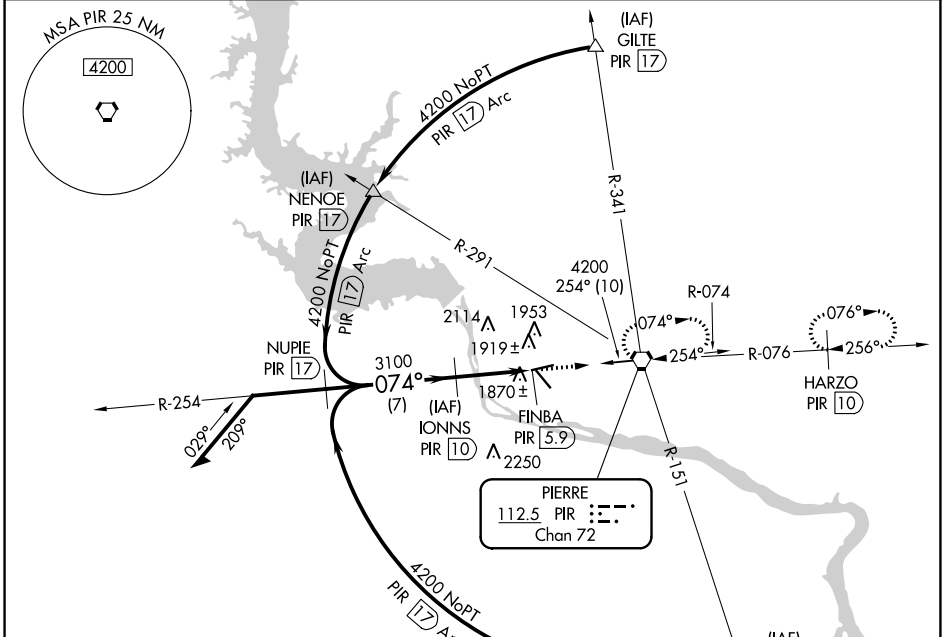
VORTAC PIR 112.5 Chan 72	APP CRS 074°	Rwy Idg TDZE Apt Elev	6830 1744 1744
---------------------------------------	------------------------	-----------------------------	---

VOR/DME or TACAN RWY 7

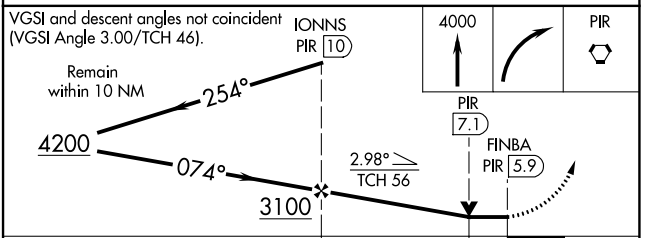
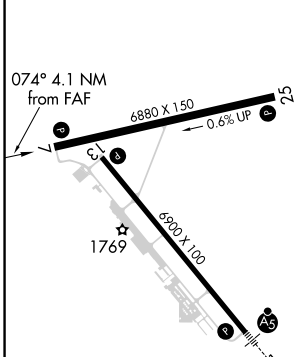
PIERRE RGNL (PIR)

⚠ MISSED APPROACH: Climb to 4000 then right turn direct PIR VORTAC and hold. (TACAN aircraft continue via PIR R-076 to HARZO 10 DME and hold East, right turns, 256° inbound).

ASOS 119.025	MINNEAPOLIS CENTER 125.1 269.1	CTAF 122.7	UNICOM 122.95
------------------------	--	----------------------	-------------------------



ELEV 1744	D	TDZE 1744
-----------	----------	-----------



CATEGORY	A	B	C	D
S-7	2180-1	436 (500-1)	2180-1¼ 436 (500-1¼)	2180-1½ 436 (500-1½)
C CIRCLING	2240-1 496 (500-1)	2300-1 556 (600-1)	2400-1¾ 656 (700-1¾)	2460-2¼ 716 (800-2¼)

VOR/DME or TACAN RWY 7

NC-1, 22 APR 2021 to 20 MAY 2021

NC-1, 22 APR 2021 to 20 MAY 2021