

LOC/DME I-PIH <b>110.3</b> Chan 40	APP CRS <b>211°</b>	Rwy Idg TDZE <b>9059</b> <b>4452</b>	Apt Elev <b>4452</b>
--	------------------------	--	-------------------------

# ILS or LOC RWY 21

POCATELLO RGNL (PIH)

**⚠** Circling NA southeast of Rwy 3-21. For inoperative MALSR, increase S-ILS-21 Cat E visibility to RVR 4000, and S-LOC-21 Cat E visibility to RVR 5000.  
# RVR 1800 authorized with the use of FD or AP or HUD to DA.

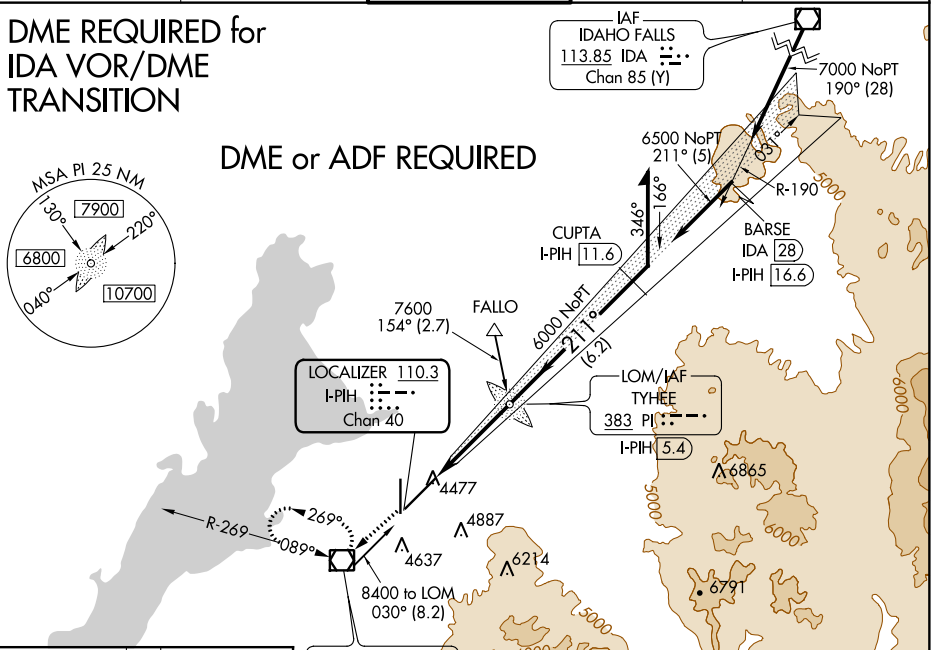


**MISSED APPROACH:** Climb to 7400 direct PIH VOR/DME, continue climb via PIH VOR/DME R-269, then right turn direct PIH VOR/DME and hold.

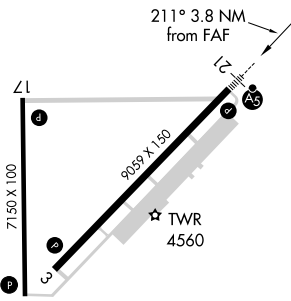
ATIS <b>135.625</b>	SALT LAKE CENTER <b>128.35 239.25</b>	<b>POCATELLO TOWER *</b> <b>119.1 (CTAF) 257.8</b>	GND CON <b>121.9</b>	UNICOM <b>122.95</b>
------------------------	--	---	-------------------------	-------------------------

## DME REQUIRED for IDA VOR/DME TRANSITION

## DME or ADF REQUIRED



ELEV <b>4452</b>	<b>D</b>	TDZE <b>4452</b>
------------------	----------	------------------



**POCATELLO**  
112.6 PIH  
Chan 73

7400 ↑ PIH	↑ PIH R-269	PIH	TYHEE LOM* I-PIH [5.4]	*Procedure turn not authorized for Cat E aircraft. Remain within 10 NM
Use I-PIH DME when on LOC course.				
5715 031° 211° 7600 6000 GS 3.00° TCH 56 VGSi and ILS glidepath not coincident (VGSi Angle 3.00/TCH 52).				

FAF to MAP 3.8 NM					
Knots	60	90	120	150	180
Min:Sec	3:48	2:32	1:54	1:31	1:16
CATEGORY	A	B	C	D	E
S-ILS 21 #	4652/24 200 (200-½)				
S-LOC 21	4740/24 288 (300-½)			4740/40 288 (300-¾)	
CIRCLING	4820-1 368 (400-1)	4920-1 468 (500-1)	4920-1½ 468 (500-1½)	5020-2	568 (600-2)

NW-1, 22 APR 2021 to 20 MAY 2021

NW-1, 22 APR 2021 to 20 MAY 2021