

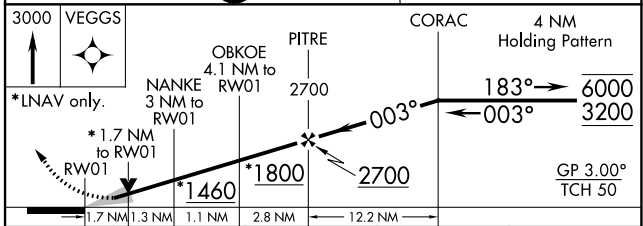
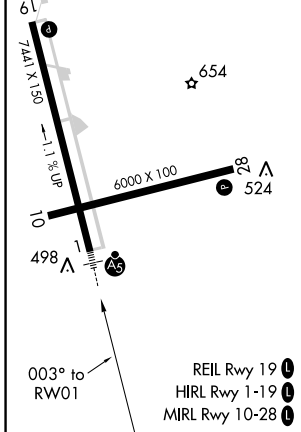
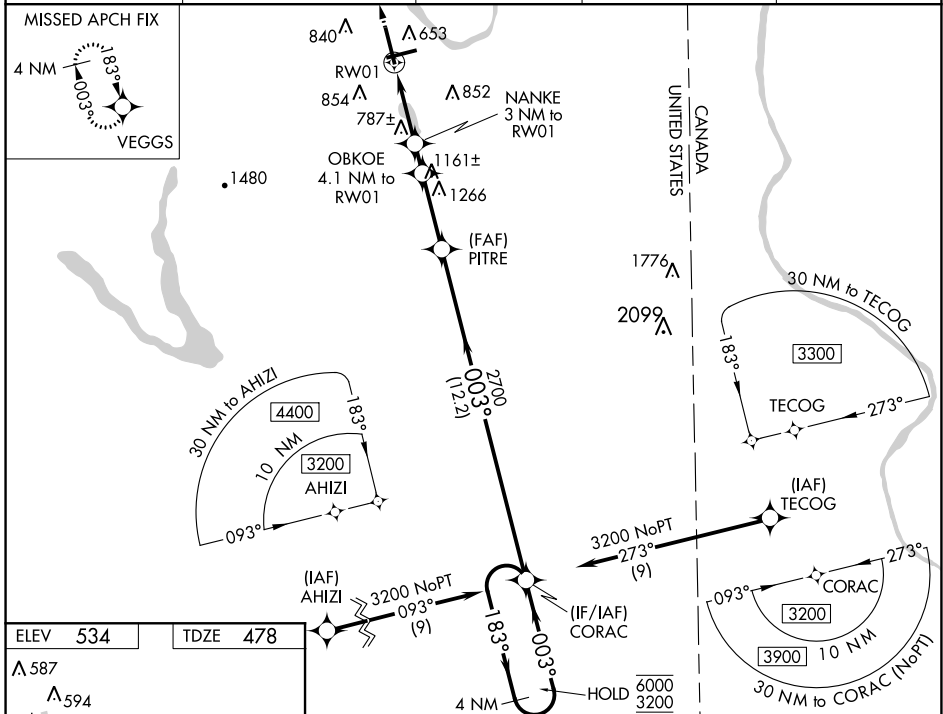
WAAS CH <b>87012</b> <b>W01A</b>	APP CRS <b>003°</b>	Rwy Idg TDZE Apt Elev	<b>7441</b> <b>478</b> <b>534</b>
--	------------------------	-----------------------------	---

# RNAV (GPS) RWY 1

PRESQUE ISLE INTL (PQI)

RNP APCH.	For uncompensated Baro-VNAV systems, LNAV/VNAV NA below -16°C or above 54°C. For inop ALS, increase LNAV/VNAV all Cats visibility to 1% SM and LNAV Cat C/D to 1% SM.	MALSRS 	MISSED APPROACH: Climb to 3000 direct VEGGS and hold.
-----------	---	------------	--

AWOS-3PT <b>118.025</b>	BOSTON CENTER <b>124.75 239.05</b>	CLNC DEL <b>121.6</b>	UNICOM <b>122.8 (CTAF)</b>	<b>122.6</b>
----------------------------	---------------------------------------	--------------------------	-------------------------------	--------------



CATEGORY	A	B	C	D
LPV DA		678-½	200 (200-½)	
LNAV/VNAV DA		971-1	493 (500-1)	
LNAV MDA	1040-½	562 (600-½)	1040-¼	562 (600-¼)
CIRCLING	1180-1	646 (700-1)	1300-2¼ 766 (800-2¼)	1360-2¾ 826 (900-2¾)

NE-1, 22 APR 2021 to 20 MAY 2021

NE-1, 22 APR 2021 to 20 MAY 2021