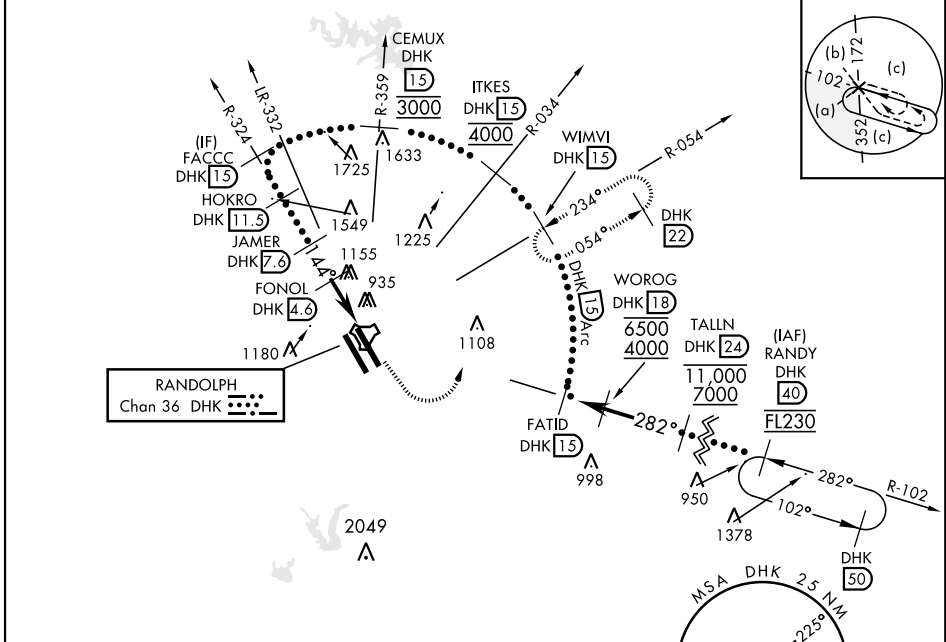


# HI-TACAN A

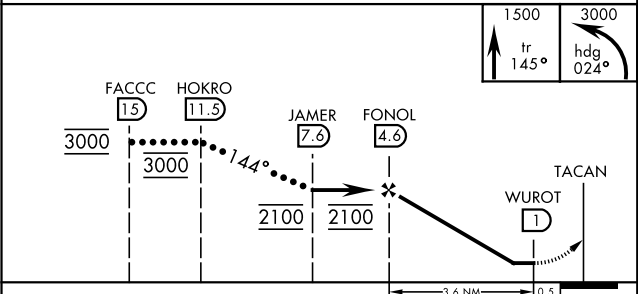
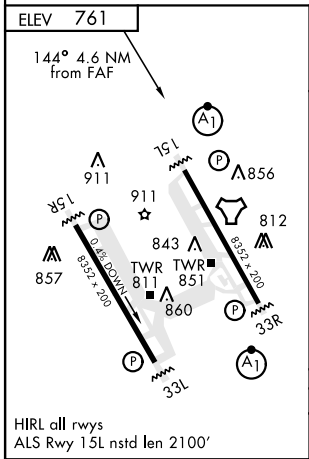
TACAN DHK Chan <b>36</b>	APCH CRS <b>144°</b>	Rwy Idg TDZE Arpt Elev <b>N/A</b> <b>N/A</b> <b>761</b>	AL-341 [USAF]	RANDOLPH AFB (KRND)
-----------------------------	-------------------------	--	---------------	---------------------

RADAR required for missed approach monitoring.		MISSED APPROACH: Track heading 145° to 1500. Then climbing left turn heading 024° to 3000. Intercept DHK TACAN R-054 to WIMVI and hold.		
* Circling not authorized SW of Rwy 15L-33R.				

ATIS ★ <b>290.525</b>	SAN ANTONIO APP CON <b>128.05 318.1</b>	RANDOLPH TOWER ★ <b>128.25 294.7</b>	RANDOLPH GND CON <b>119.65 275.8</b>	CLNC DEL (RWY 15L-33R) <b>338.35</b>	HANGOVER ATIS ★ <b>327.8</b>	HANGOVER TOWER ★ <b>120.5 291.1</b>	HANGOVER GND CON <b>124.75 353.75</b>
--------------------------	--	---	---	---	---------------------------------	--	--



EMERG SAFE ALT 100 NM 4100



CATEGORY	C	D	E
CIRCLING*	1300-1 1/2 539 (600-1 1/2)	1800-3	1039 (1100-3)

# HI-TACAN A

SC-3, 22 APR 2021 to 20 MAY 2021

SC-3, 22 APR 2021 to 20 MAY 2021