

ILS or LOC Y RWY 33R

LOC I-RND 109.3	APCH CRS 325°	Rwy Ldg TDZE 8352 733 Arprt Elev 761	AL-341 [USAF]	RANDOLPH AFB (KRND)
---------------------------	-------------------------	---	---------------	---------------------

RADAR or DME required.

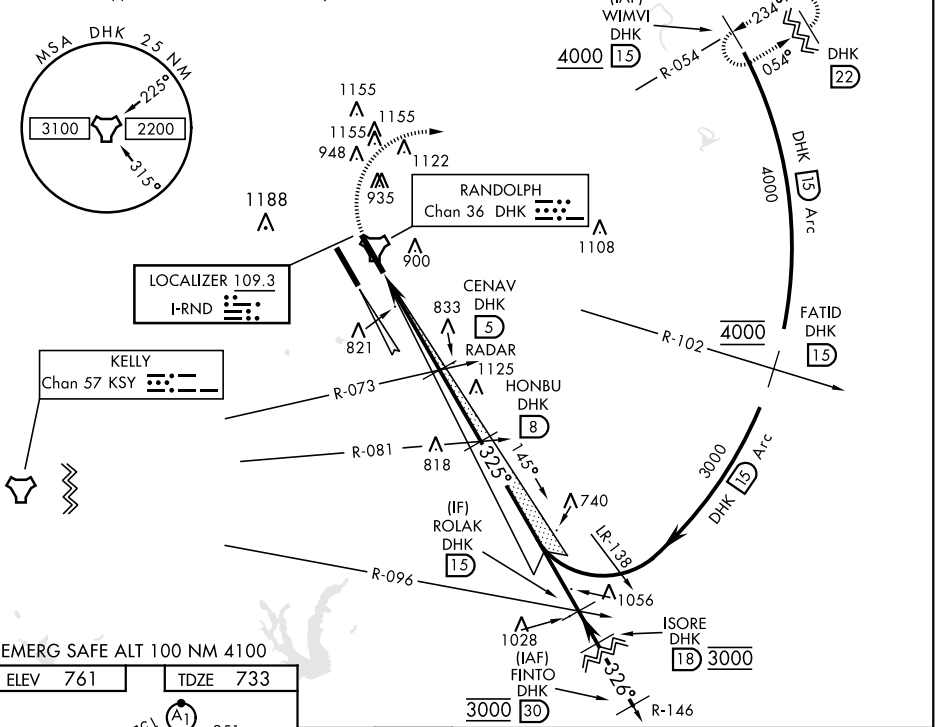
* When ALS inop, increase RVR to 40 and vis to ¾ mile.
 ** When ALS inop, increase CAT AB RVR to 55, vis to 1 mile; CAT CDE vis to 1½ miles.
 *** Circling not authorized SW of Rwy 15L-33R.

ALS-F1

MISSED APPROACH: Climb to 1500, then climbing right turn hdg 084° to 3000. Intercept DHK R-054 to WIMVI and hold.

ATIS ★ 290.525	SAN ANTONIO APP CON 128.05 318.1	RANDOLPH TOWER ★ 128.25 294.7	RANDOLPH GND CON 119.65 275.8	CLNC DEL (RWY 15L-33R) 338.35	HANGOVER ATIS ★ 327.8	HANGOVER TOWER ★ 120.5 291.1	HANGOVER GND CON 124.75 353.75
--------------------------	--	---	---	---	---------------------------------	--	--

Simultaneous approaches authorized with Rwy 33R and 33L.



EMERG SAFE ALT 100 NM 4100

ELEV 761	TDZE 733
----------	----------

Knots	60	90	120	150	180
Min:Sec	3:36	2:24	1:48	1:26	1:12

TACAN	↑ LOC Only	CENAV DHK (5)	HONBU DHK (B)	ROLAK DHK (15)
FOLAV (1.4)	↑ 2.2	RADAR 2100	3000	2100
0.5 NM	3.6 NM	2100	2100	3000

GP 3.00° TCH 53

VGSI and ILS glidepath not coincident (VGSI Angle 3.00/TCH 42).

CATEGORY	A	B	C	D	E
S-ILS 33R *	933/24		200	(200-½)	
S-LOC 33R **	1180/24	447 (500-½)	1180/45	447 (500-¾)	
CIRCLING ***	1180-1 419 (500-1)	1220-1 459 (500-1)	1260-1½ 499 (500-1½)	1800-3 1039 (1100-3)	

ILS or LOC Y RWY 33R

SC-3, 22 APR 2021 to 20 MAY 2021

SC-3, 22 APR 2021 to 20 MAY 2021