

UNIVERSAL CITY, TEXAS

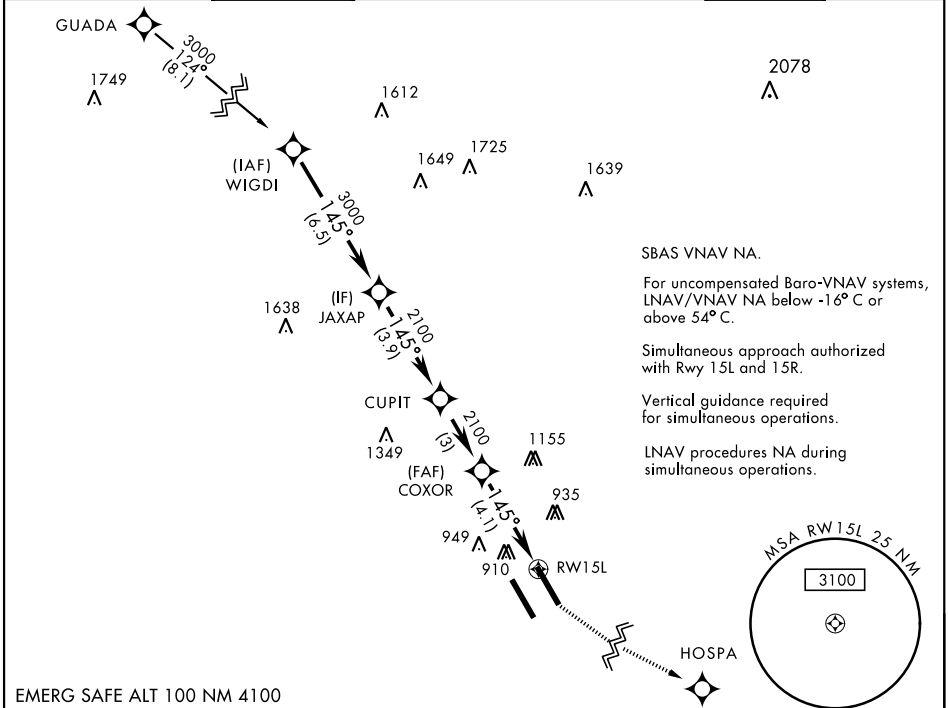
RNAV (GPS) RWY 15L

APCH CRS	Rwy Idg	8352
145°	TDZE	742
	Arpt Elev	761

AL-341 [USAF]

RANDOLPH AFB (KRND)

RNP APCH - GPS.		ALSF-1		MISSED APPROACH: Climb to 1500, then climbing left turn to 3000 direct HOSPA. Expect ATC instructions.			
*When ALS inop, increase vis to 1 3/8 miles. **When ALS inop, increase CAT AB RVR to 55, vis to 1 mile; CAT CDE vis to 1 3/8 miles. ***Circling not authorized SW of Rwy 15L-33R.							
ATIS ★	SAN ANTONIO APP CON	RANDOLPH TOWER ★	RANDOLPH GND CON	CLNC DEL (RWY 15L-33R)	HANGOVER ATIS ★	HANGOVER TOWER ★	HANGOVER GND CON
290.525	128.05 318.1	128.25 294.7	119.65 275.8	338.35	327.8	120.5 291.1	124.75 353.75



SBAS VNAV NA.

For uncompensated Baro-VNAV systems, LNAV/VNAV NA below -16° C or above 54° C.

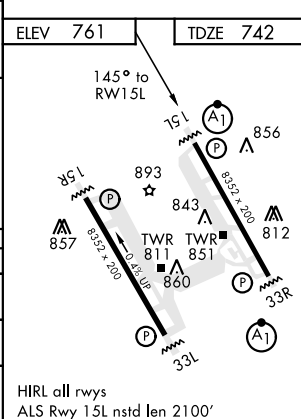
Simultaneous approach authorized with Rwy 15L and 15R.

Vertical guidance required for simultaneous operations.

LNAV procedures NA during simultaneous operations.

EMERG SAFE ALT 100 NM 4100

					<table border="1"> <tr> <td>↑ LNAV only</td> <td>1500</td> <td>3000</td> <td>HOSPA</td> </tr> </table>		↑ LNAV only	1500	3000	HOSPA
↑ LNAV only	1500	3000	HOSPA							
ELEV 761		TDZE 742								
CATEGORY	A	B	C	D	E					
LNAV/VNAV DA*	1240/60 498 (500-1 1/2)									
LNAV MDA**	1240/40 498 (500-3/4)		1240/60 498 (500-1 1/2)							
CIRCLING***	1240-1	479 (500-1)	1260-1 1/2 499 (500-1 1/2)		1800-3 1039 (1100-3)					



HIRL all rwys
ALS Rwy 15L nstd len 2100'

SC-3, 22 APR 2021 to 20 MAY 2021

SC-3, 22 APR 2021 to 20 MAY 2021

UNIVERSAL CITY, TEXAS

29°32'N-98°17'W

RANDOLPH AFB (KRND)

Amdt 1 28JAN21

RNAV (GPS) RWY 15L