

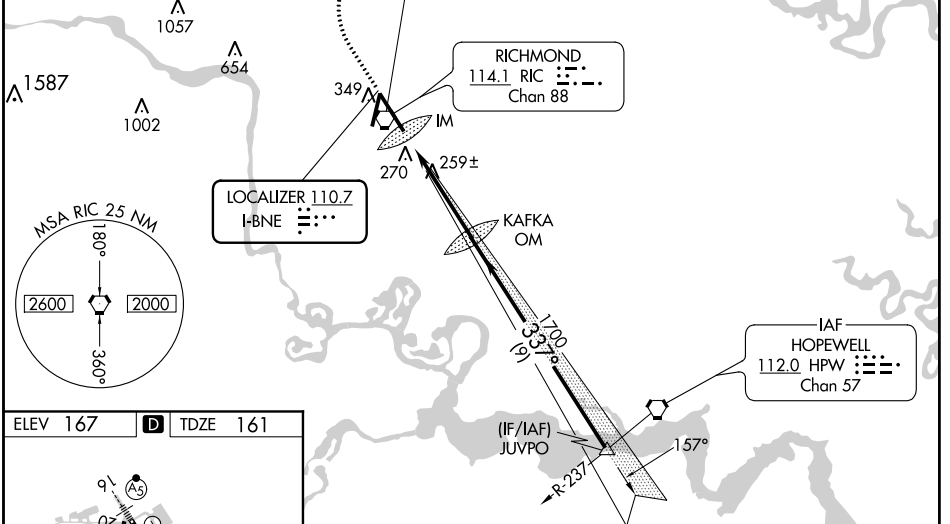
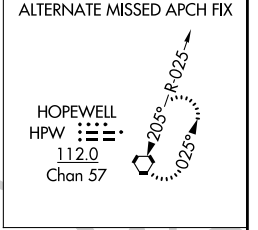
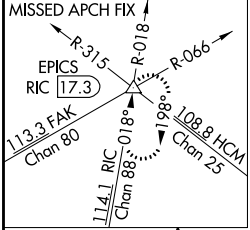
LOC I-BNE <b>110.7</b>	APP CRS <b>337°</b>	Rwy Idg TDZE Apt Elev	<b>9003</b> <b>161</b> <b>167</b>
---------------------------	------------------------	-----------------------------	---

# ILS RWY 34 (SA CAT I)

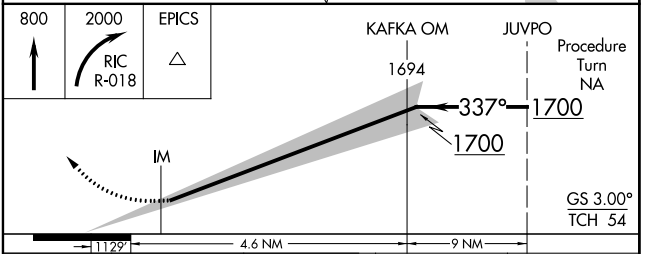
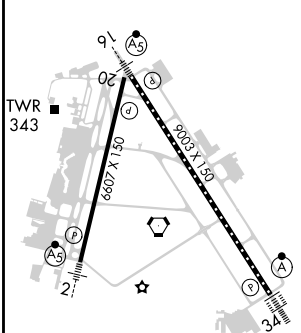
RICHMOND INTL (RIC)

Requires specific OPSPEC, MSPEC, or LOA approval and use of HUD to DH.	ALSF-2 	MISSED APPROACH: Climb to 800 then climbing right turn to 2000 via RIC VORTAC R-018 to EPICS INT/RIC 17.3 DME and hold.
--	------------	---

ATIS <b>119.15 263.025</b>	POTOMAC APP CON <b>126.4 282.375</b> (001°-185°) <b>126.75 307.2</b> (186°-360°)	RICHMOND TOWER <b>121.1 257.8</b>	GND CON <b>121.9 348.6</b>	CLNC DEL <b>127.55 348.6</b>
-------------------------------	--	--------------------------------------	-------------------------------	---------------------------------



ELEV 167	<b>D</b>	TDZE 161
----------	----------	----------



CATEGORY	A	B	C	D
S-ILS 34	RA 156/14 150 DA 311			

**SA CATEGORY I ILS-SPECIAL AIRCREW & AIRCRAFT CERTIFICATION REQUIRED**

NE-3, 22 APR 2021 to 20 MAY 2021

NE-3, 22 APR 2021 to 20 MAY 2021