

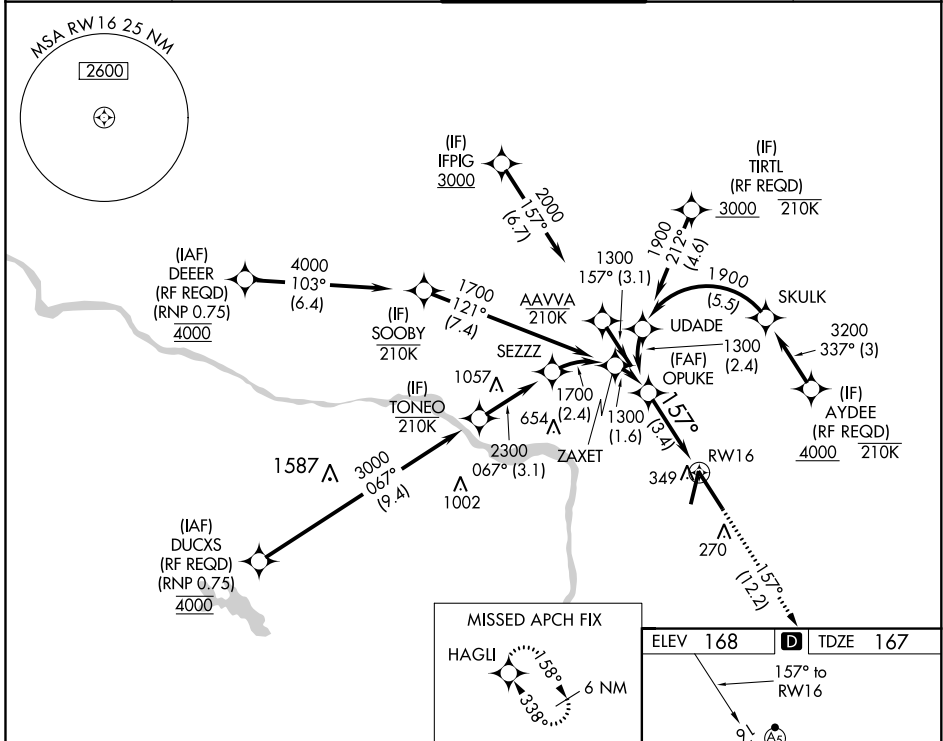
APP CRS	Rwy Idg	9003
157°	TDZE	167
	Apt Elev	168

RNAV (RNP) Y RWY 16

RICHMOND INTL (RIC)

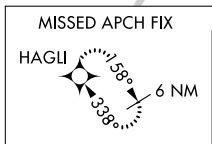
RNP AR APCH.	MALSR	MISSED APPROACH: Climb to 2500 on track 157° to HAGLI and hold.
<p>▼ For uncompensated Baro-VNAV systems, procedure NA below -11°C (13°F) or above 54°C (130°F). For inop ALS, increase RNP 0.11 all Cats visibility to RVR 5500 and RNP 0.30 all Cats visibility to 1½ SM.</p>		

ATIS	POTOMAC APP CON	RICHMOND TOWER	GND CON	CLNC DEL
119.15 263.025	126.4 282.375 (001°-185°) 126.75 307.2 (186°-360°)	121.1 257.8	121.9 348.6	127.55 348.6

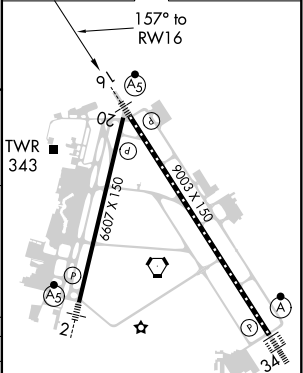
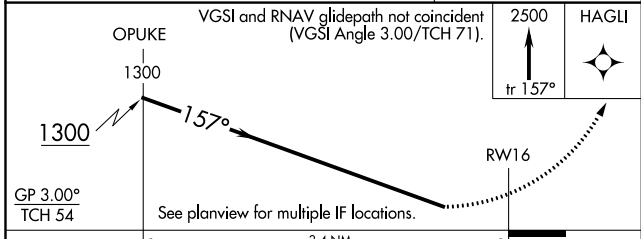


NE-3, 22 APR 2021 to 20 MAY 2021

NE-3, 22 APR 2021 to 20 MAY 2021



ELEV 168	D TDZE 167
----------	-------------------



CATEGORY	A	B	C	D
RNP 0.11 DA		506/40	339 (400-¾)	
RNP 0.30 DA		606/50	439 (500-1)	

TDZ/CL Rwy 34
HIRL Rwy 2-20 and 16-34
REIL Rwy 20

AUTHORIZATION REQUIRED