

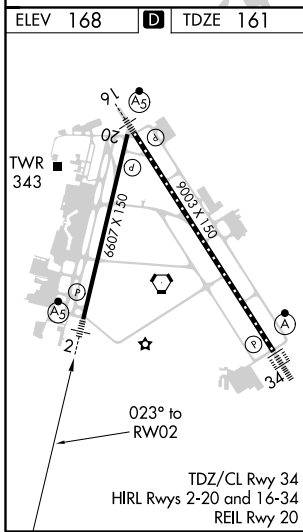
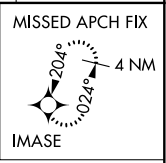
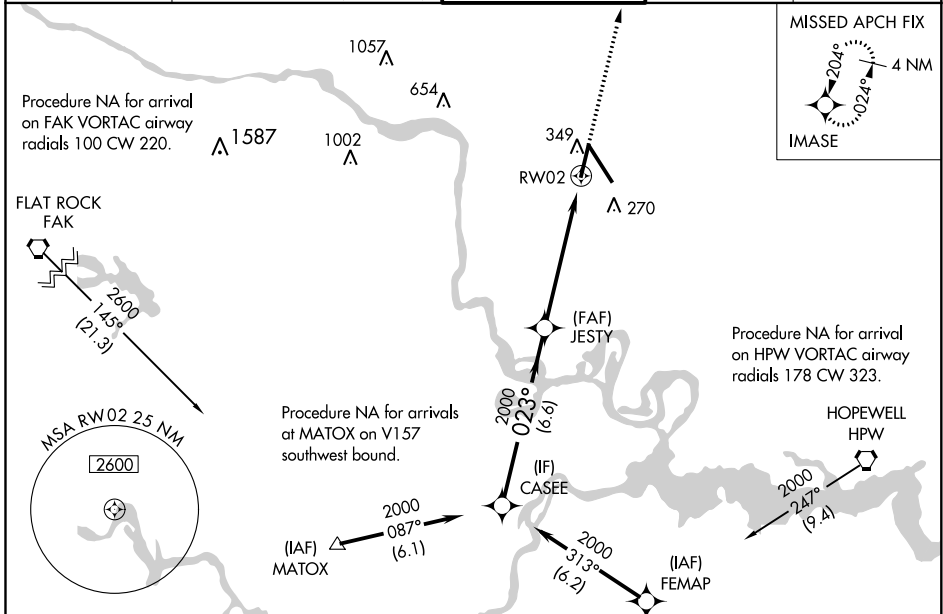
WAAS CH 72716 W02A	APP CRS 023°	Rwy Idg TDZE 161 Apt Elev 168	6607
--	------------------------	---	-------------

RNAV (GPS) Z RWY 2

RICHMOND INTL (RIC)

RNP APCH.	MALSR	MISSED APPROACH: Climb to 2000 direct IMASE and hold.
▼ For uncompensated Baro-VNAV systems, LNAV/VNAV NA below -11°C (13°F) or above 54°C (130°F). Rwy 2 helicopter visibility reduction below ¾ SM NA.		

ATIS 119.15 263.025	POTOMAC APP CON 126.4 282.375 (001°-185°) 126.75 307.2 (186°-360°)	RICHMOND TOWER 121.1 257.8	GND CON 121.9 348.6	CLNC DEL 127.55 348.6
-------------------------------	--	--------------------------------------	-------------------------------	---------------------------------



ELEV 168	TDZE 161				
CASEE	JESTY	2000	2000	2000	2000
2000	023°	023°	023°	023°	
GP 3.00° TCH 50	6.6 NM	4.3 NM	1.3 NM	1.3 NM to RWY 2	* 1.3 NM to RWY 2 * LNAV only.
CATEGORY	A	B	C	D	
LPV DA	457-¾		296 (300-¾)		
LNAV/VNAV DA	568-⅞		407 (400-⅞)		
LNAV MDA	620-¾ 459 (500-¾)		620-1 459 (500-1)		
<input checked="" type="checkbox"/> CIRCLING	660-1 492 (500-1)		700-1½ 532 (600-1½)		720-2 552 (600-2)

NE-3, 22 APR 2021 to 20 MAY 2021

NE-3, 22 APR 2021 to 20 MAY 2021