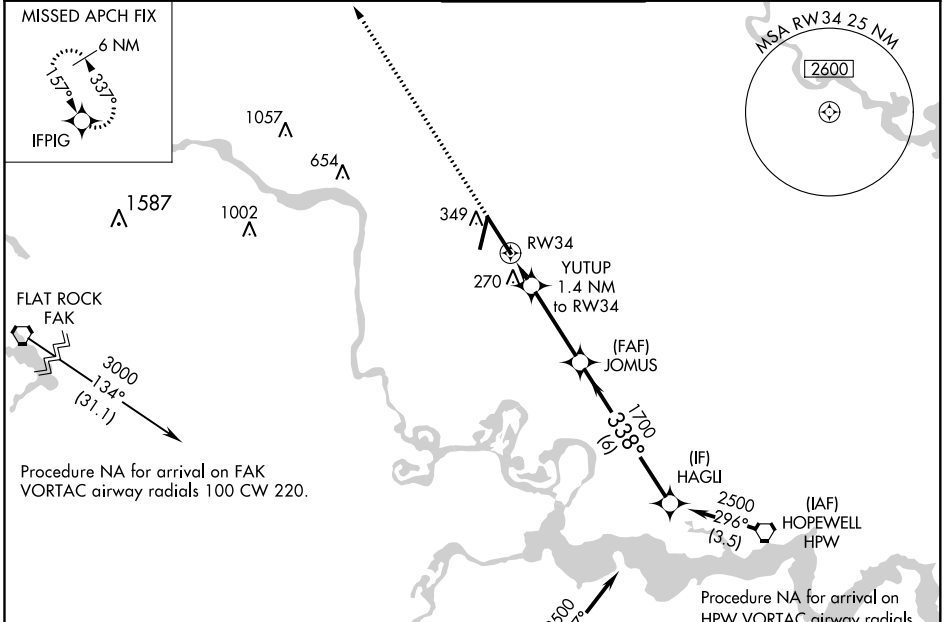


WAAS CH 97520 W34A	APP CRS 338°	Rwy Idg TDZE 161 Apt Elev 168	9003
--	------------------------	---	-------------

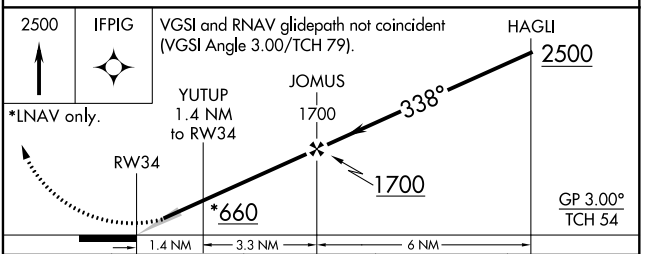
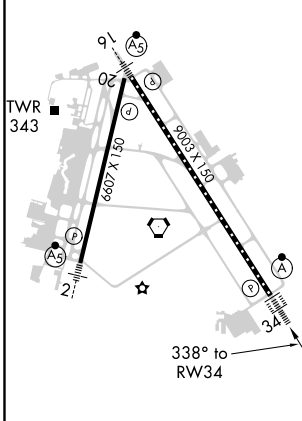
RNAV (GPS) Z RWY 34

RICHMOND INTL (RIC)

RNP APCH.		ALSF-2 	MISSED APPROACH: Climb to 2500 direct IFPIG and hold.
<p>▼ For uncompensated Baro-VNAV systems, LNAV/VNAV NA below -11°C or above 54°C. For inop ALS, increase LNAV/VNAV all Cats visibility to 1¼ SM and LNAV Cats C and D visibility to RVR 5500.</p>			
ATIS 119.15 263.025	POTOMAC APP CON 126.4 282.375 (001°-185°) 126.75 307.2 (186°-360°)	RICHMOND TOWER 121.1 257.8	GND CON 121.9 348.6
		CLNC DEL 127.55 348.6	



ELEV 168	D	TDZE 161
-----------------	----------	-----------------



CATEGORY	A	B	C	D
LPV DA	361/18		200 (200-½)	
LNAV/VNAV DA	530/37		369 (400-¾)	
LNAV MDA	520/24	359 (400-½)	520/30	359 (400-¾)
C CIRCLING	660-1	492 (500-1)	700-1½ 532 (600-1½)	720-2 552 (600-2)

NE-3, 22 APR 2021 to 20 MAY 2021

NE-3, 22 APR 2021 to 20 MAY 2021