

VORTAC RIC <b>114.1</b> Chan <b>88</b>	APP CRS <b>041°</b>	Rwy Idg TDZE <b>162</b> Apt Elev <b>167</b>	<b>6607</b>
--	------------------------	---	-------------

# VOR RWY 2

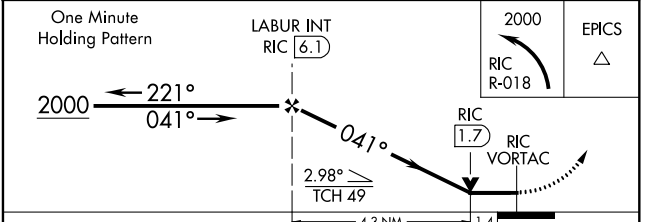
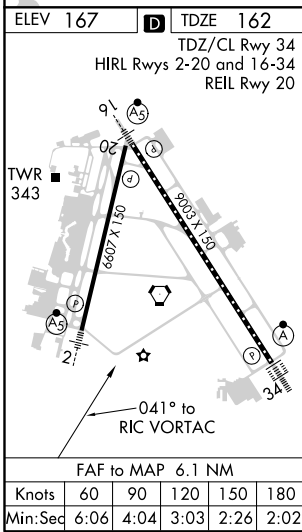
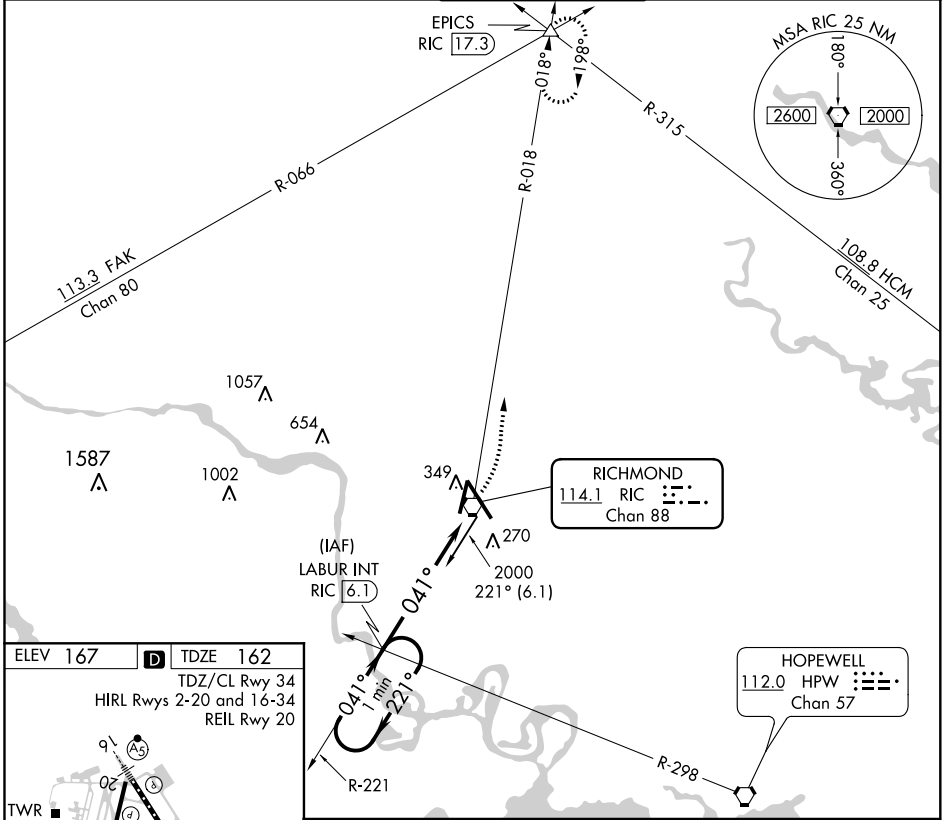
RICHMOND INTL (RIC)

**▼** Rwy 2 helicopter visibility reduction below ¾ SM NA. For inop ALS, increase S-2 Cat A/B visibility to 1 SM, and Cat C/D to 1½ SM.



**MISSED APPROACH:** Climbing left turn to 2000 on RIC VORTAC R-018 to EPICS INT/RIC 17.3 DME and hold.

ATIS <b>119.15 263.025</b>	POTOMAC APP CON <b>126.4 282.375</b> (001°-185°) <b>126.75 307.2</b> (186°-360°)	RICHMOND TOWER <b>121.1 257.8</b>	GND CON <b>121.9 348.6</b>	CLNC DEL <b>127.55 348.6</b>
-------------------------------	--	--------------------------------------	-------------------------------	---------------------------------



CATEGORY	A	B	C	D
S-2	640-¾ 478 (500-¾)		640-1 478 (500-1)	
<b>C</b> CIRCLING	660-1 493 (500-1)		700-1½ 533 (600-1½)	720-2 553 (600-2)

NE-3, 22 APR 2021 to 20 MAY 2021

NE-3, 22 APR 2021 to 20 MAY 2021