

VORTAC RIC <b>114.1</b> Chan <b>88</b>	APP CRS <b>323°</b>	Rwy Idg <b>9003</b> TDZE <b>161</b> Apt Elev <b>167</b>
--	------------------------	---

# VOR RWY 34

RICHMOND INTL (RIC)

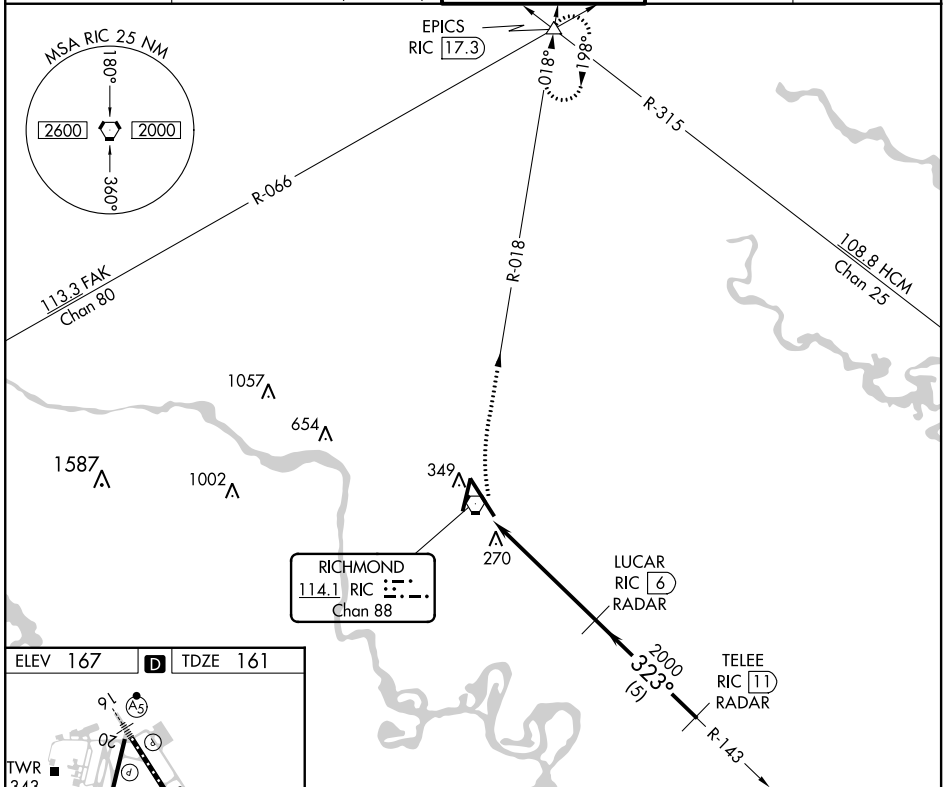
DME or RADAR required. RADAR required for procedure entry.

ALSF-2



MISSED APPROACH: Climbing right turn to 2000 via RIC R-018 to EPICS INT and hold.

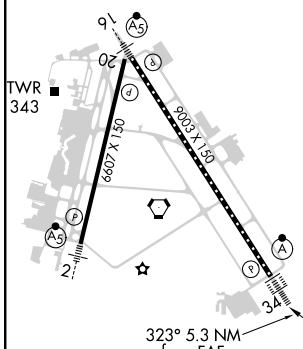
ATIS <b>119.15 263.025</b>	POTOMAC APP CON <b>126.4 282.375</b> (001°-185°) <b>126.75 307.2</b> (186°-360°)	RICHMOND TOWER <b>121.1 257.8</b>	GND CON <b>121.9 348.6</b>	CLNC DEL <b>127.55 348.6</b>
-------------------------------	--	--------------------------------------	-------------------------------	---------------------------------



NE-3, 22 APR 2021 to 20 MAY 2021

NE-3, 22 APR 2021 to 20 MAY 2021

ELEV 167	<b>D</b>	TDZE 161
----------	----------	----------

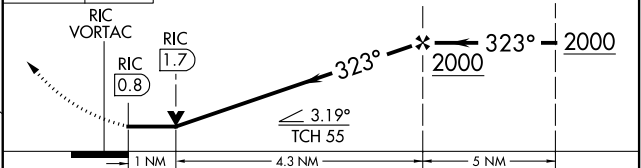


TDZ/CL Rwy 34  
HIRL Rws 2-20 and 16-34  
REIL Rwy 20

FAF to MAP 5.3 NM

Knots	60	90	120	150	180
Min:Sec	5:18	3:32	2:39	2:07	1:46

2000 RIC R-018	EPICS △	VGSI and descent angles not coincident (VGSI Angle 3/00/TCH 79).	LUCAR RIC 6 RADAR	TELEE RIC 11 RADAR
-------------------	------------	---	-------------------------	--------------------------



CATEGORY	A	B	C	D
S-34	540/24 379 (400-½)		540/40 379 (400-¾)	540/50 379 (400-1)
<input checked="" type="checkbox"/> CIRCLING	660-1 493 (500-1)		700-1½ 533 (600-1½)	720-2 553 (600-2)