

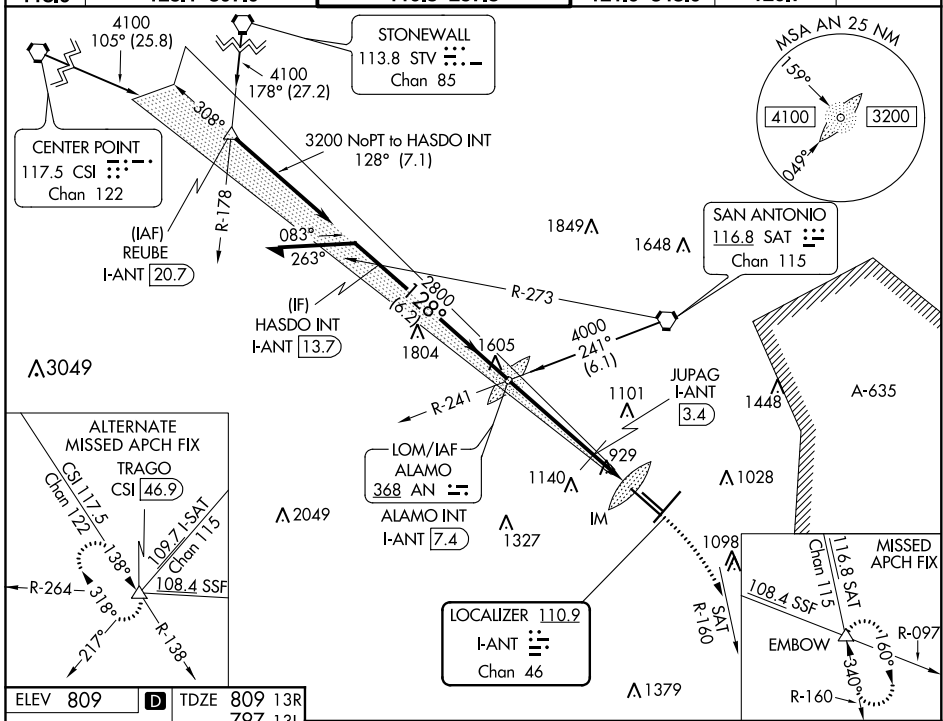
LOC/DME I-ANT 110.9 Chan 46	APP CRS 128°	Rwy 13R Idg TDZE Apt Elev	8502 809 809	Rwy 13L Idg TDZE Apt Elev	5519 797 809
---	------------------------	---------------------------------	---	---------------------------------	---

ILS or LOC RWY 13R

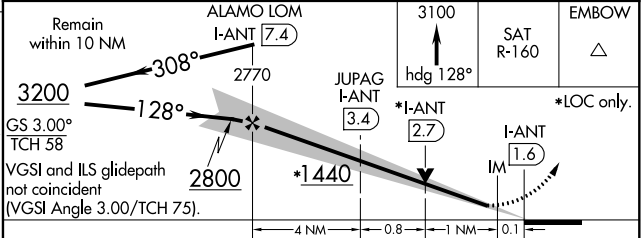
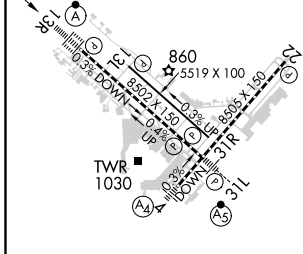
SAN ANTONIO INTL (SAT)

⚠ Circling NA west of Rwy 4 and 13R. For inop ALS, increase S-LOC 13R Cats C and D visibility to 1¼ SM. **ALSF-2** **⚠** MISSED APPROACH: Climb to 3100 on heading 128° and SAT VORTAC R-160 to EMBOW INT and hold.

D-ATIS 118.9	SAN ANTONIO APP CON 125.1 307.0	SAN ANTONIO TOWER 119.8 257.8	GND CON 121.9 348.6	CLNC DEL 126.7	CPDLC
------------------------	---	---	-------------------------------	--------------------------	-------



ELEV 809	D	TDZE 809 13R	797 13L
-----------------	----------	---------------------	----------------



CATEGORY	A	B	C	D
S-ILS 13R	1009/18 200 (200-½)			
S-LOC 13R	1440/24	631 (700-½)	1440-1⅓	631 (700-1⅓)
SIDESTEP 13L	1600-1 803 (800-1)	1600-1¼ 803 (800-1¼)	1600-2½	803 (800-2½)
CIRCLING	1440-1	631 (700-1)	1440-1¾ 631 (700-1¾)	1440-2 631 (700-2)
JUPAG FIX MINIMUMS				
S-LOC 13R	1240/24	431 (500-½)	1240/40	431 (500-¾)

TDZ/CL Rwy 13R
REIL Rwy 13L, 22 and 31R
HIRL Rwy 4-22 and 13R-31L
MIRL Rwy 13L-31R

FAF to MAP 5.9 NM

Knots	60	90	120	150	180
Min:Sec	5:54	3:56	2:57	2:22	1:58

SC-3, 22 APR 2021 to 20 MAY 2021

SC-3, 22 APR 2021 to 20 MAY 2021