

# MARCS ONE ARRIVAL

SAN ANTONIO, TEXAS

SAN ANTONIO APP CON

127.1 269.1  
KRND ATIS★  
290.525  
SAT D-ATIS  
118.9  
SKF ATIS  
120.45 273.5  
SSF ATIS  
128.8

WACO  
115.3 ACT  
Chan 100  
N 31°39.74' - W 97°16.14'  
L-19, H-6

MAVERICK  
113.1 TTT  
Chan 78

GOOCH SPRINGS  
112.5 AGJ  
Chan 72

BLEWE  
N31°12.46'  
W97°12.54'

WINDU  
N31°31.83'  
W97°04.95'  
L-19, H-6

MARCS  
N29°53.87'  
W97°51.68'  
L-15, H-7  
TURBOJET VERTICAL  
NAVIGATION PLANNING  
INFORMATION  
Expect 13000

LUFKIN  
112.1 LFK  
Chan 58  
N31°09.75'-W94°43.01'  
L-19-21, H-6

CENTEX  
112.8 CWK  
Chan 75  
N30°22.71'-W97°31.79'  
L-19-21, H-7

STONEWALL  
113.8 STV  
Chan 85

INDUSTRY  
110.2 IDU  
Chan 39  
N29°57.36'-W96°33.73'  
L-19-21, H-7

LOCALIZER 110.9  
I-ANT  
Chan 46

TROOP  
N29°40.84'  
W98°22.52'

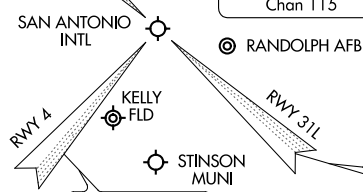
BRAUN  
N29°48.77'  
W98°03.79'

CRAYS  
N29°55.11'  
W97°25.99'

CRISS  
N29°39.52'  
W98°25.62'

SAN ANTONIO  
116.8 SAT  
Chan 115

NOTE: RADAR required.



LOCALIZER 109.7  
I-SAT  
Chan 46

LOCALIZER 110.9  
I-HZ  
Chan 46

(NARRATIVE ON FOLLOWING PAGE)

NOTE: Chart not to scale

# MARCS ONE ARRIVAL

SAN ANTONIO, TEXAS

SC-3, 22 APR 2021 to 20 MAY 2021

SC-3, 22 APR 2021 to 20 MAY 2021