

APP CRS	Rwy Idg	8505
037°	TDZE	786
	Apt Elev	809

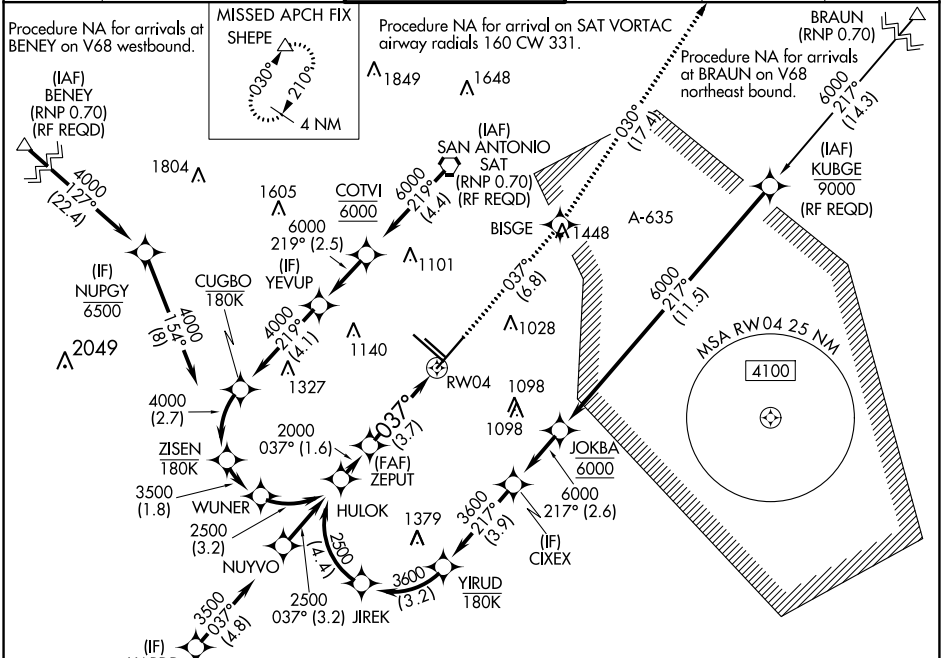
RNAV (RNP) Z RWY 4

SAN ANTONIO INTL (SAT)

▼ For uncompensated Baro-VNAV systems, procedure NA below -4°C (25°F) or above 54°C (130°F). GPS required. For inop ALS, increase RNP 0.15 Cat D visibility to 1 1/4 SM and RNP 0.30 Cat D visibility to 1 3/4 SM.

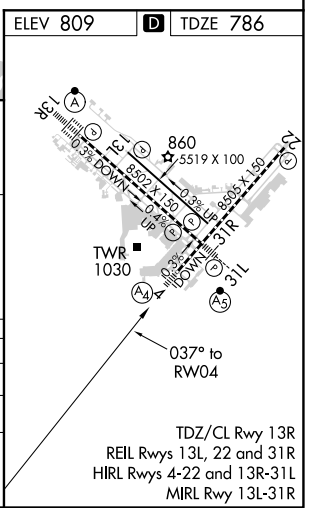
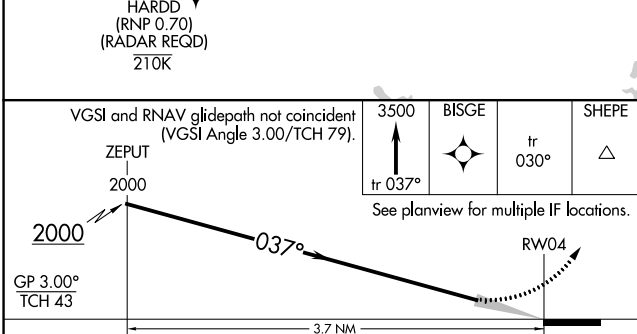
MALS MISSED APPROACH: Climb to 3500 on track 037° to BISGE and track 030° to SHEPE and hold.

D-ATIS	SAN ANTONIO APP CON	SAN ANTONIO TOWER	GND CON	CLNC DEL	CPDLC
118.9	125.1 307.0	119.8 257.8	121.9 348.6	126.7	



SC-3, 22 APR 2021 to 20 MAY 2021

SC-3, 22 APR 2021 to 20 MAY 2021



AUTHORIZATION REQUIRED