

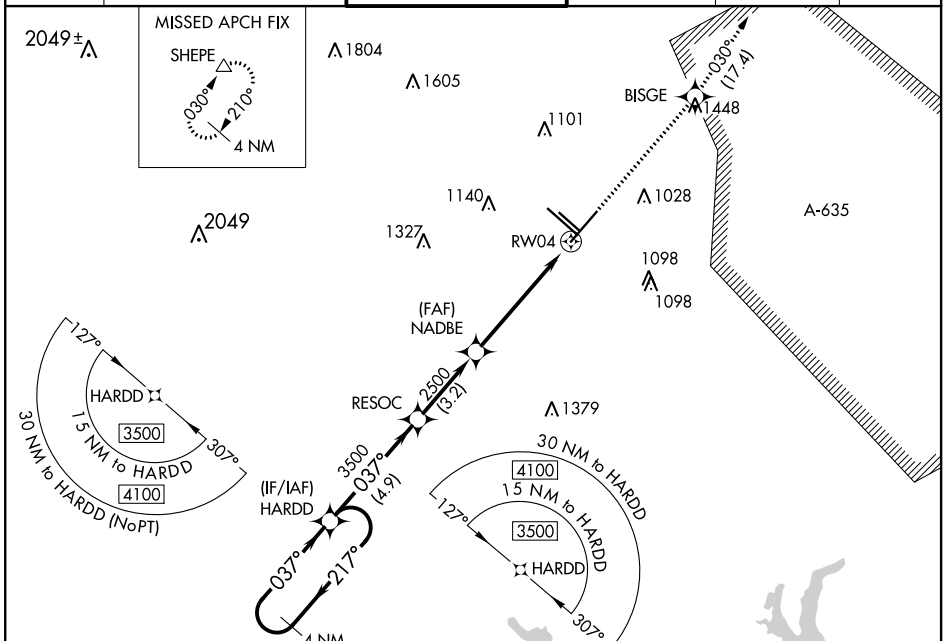
WAAS CH 77613 W04A	APP CRS 037°	Rwy Idg TDZE Apt Elev	8505 786 809
---------------------------------	------------------------	-----------------------------	---

RNAV (GPS) Y RWY 4

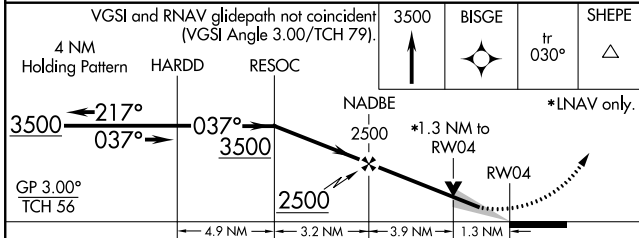
SAN ANTONIO INTL (SAT)

<p>▼ Inop table does not apply to LPV. For uncompensated Baro-VNAV systems, LNAV/VNAV NA below -4°C (25°F) or above 54°C (130°F). Circling NA west of Rwy 4 and 13R. DME/DME RNP-0.3 NA. For inop ALS, increase LNAV/VNAV all Cats and LNAV Cats C and D visibility to 1$\frac{1}{2}$.</p>	MALS A4	MISSED APPROACH: Climb to 3500 direct BISGE and track 030° to SHEPE and hold.
	<p>⊕</p>	

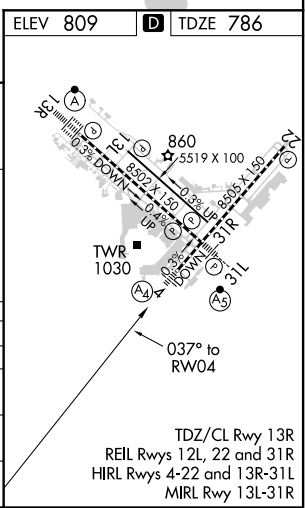
D-ATIS 118.9	SAN ANTONIO APP CON 125.1 307.0	SAN ANTONIO TOWER 119.8 257.8	GND CON 121.9 348.6	CLNC DEL 126.7	CPDLC
------------------------	---	---	-------------------------------	--------------------------	-------



ELEV 809	TDZE 786
----------	----------



CATEGORY	A	B	C	D
LPV DA		986/40	200 (200- $\frac{3}{4}$)	
LNAV/VNAV DA		1201/60	415 (400-1 $\frac{1}{4}$)	
LNAV MDA	1280/40	494 (500- $\frac{3}{4}$)	1280/60	494 (500-1 $\frac{1}{4}$)
CIRCLING	1300-1	491 (500-1)	1320-1 $\frac{1}{2}$ 511 (600-1 $\frac{1}{2}$)	1380-2 571 (600-2)



SC-3, 22 APR 2021 to 20 MAY 2021

SC-3, 22 APR 2021 to 20 MAY 2021