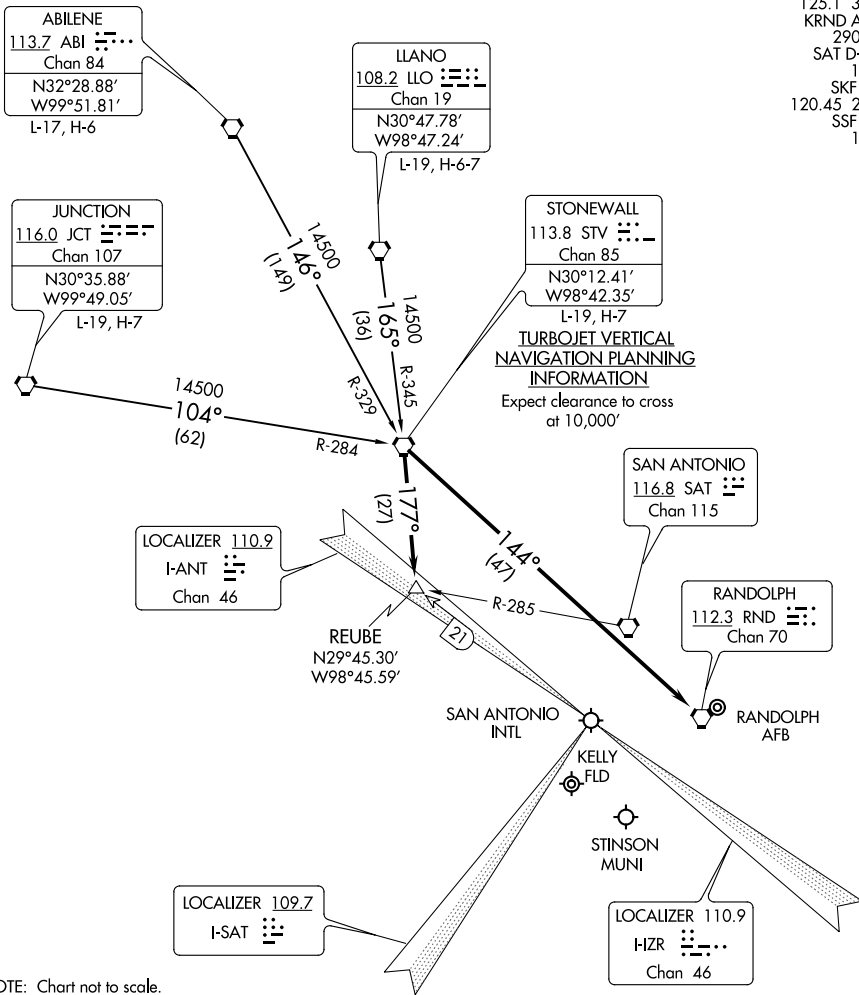


STONEWALL ONE ARRIVAL

SAN ANTONIO, TEXAS

SAN ANTONIO APP CON
 125.1 307.0
 KRND ATIS★
 290.525
 SAT D-ATIS
 118.9
 SKF ATIS
 120.45 273.5
 SSF ATIS
 128.8



TURBOJET VERTICAL NAVIGATION PLANNING INFORMATION
 Expect clearance to cross at 10,000'

NOTE: Chart not to scale.

ARRIVAL ROUTE DESCRIPTION

ABILENE TRANSITION (ABI.STV1): From over ABI VORTAC via ABI R-146 and STV R-329 to STV VORTAC. Thence

JUNCTION TRANSITION (JCT.STV1): From over JCT VORTAC via JCT R-104 and STV R-284 to STV VORTAC. Thence

LLANO TRANSITION (LLO.STV1): From over LLO VORTAC via LLO R-165 and STV R-345 to STV VORTAC. Thence

ALL AIRPORTS EXCEPT RANDOLPH AIR FORCE BASE: From over STV VORTAC via STV R-177 to REUBE INT. Expect radar vectors to final approach course.

RANDOLPH AIR FORCE BASE: From over STV VORTAC via direct RND VORTAC.

STONEWALL ONE ARRIVAL

SAN ANTONIO, TEXAS

SC-3, 22 APR 2021 to 20 MAY 2021

SC-3, 22 APR 2021 to 20 MAY 2021