

# HI-ILS or LOC/DME Z RWY 16

LOC I-SKF <b>110.1</b>	APCH CRS <b>158°</b>	Rwy Idg <b>11,550</b> TDZE <b>690</b> Arprt Elev <b>690</b>
---------------------------	-------------------------	--

JAL-371 [USAF]

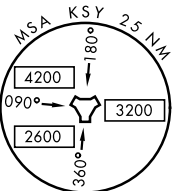
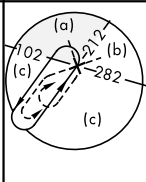
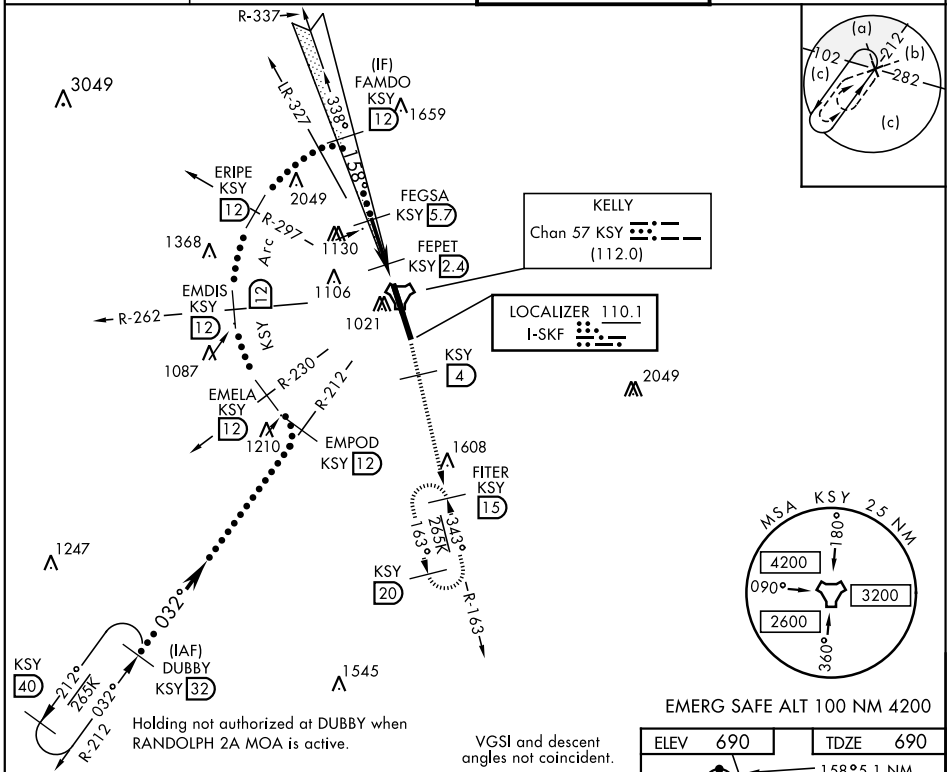
KELLY FLD (KSKF)

▼ \*When ALS inop, increase RVR to 40 and vis to ¼ mile.  
 \*\*When ALS inop, increase RVR to 60 and vis to 1½ miles.  
 \*\*\*Circling not authorized E of Rwy 16-34.

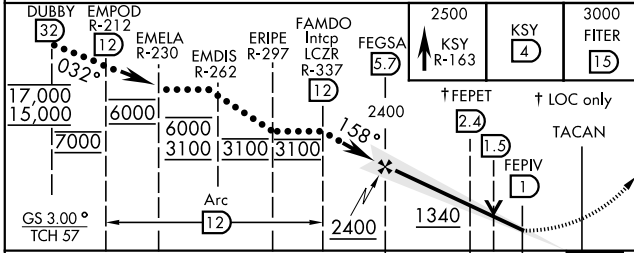


MISSED APPROACH: Climb to 2500 via KSY R-163 until 4 DME, then continue climb to 3000 to FITER/1.5 DME and hold.

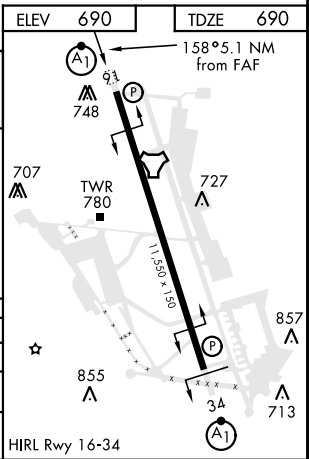
ATIS <b>120.45 273.5</b>	SAN ANTONIO APP CON <b>118.05 353.5</b>	KELLY TOWER <b>124.3 322.35</b>	GND CON <b>121.8 289.4</b>
-----------------------------	--	------------------------------------	-------------------------------



EMERG SAFE ALT 100 NM 4200



CATEGORY	C	D	E
S-ILS 16 *	890/24	200	(200-½)
S-LOC/ DME 16 **	1100/40	410	(500-¾)
CIRCLING ***	1360-1¾ 670 (700-1¾)	1440-2½ 750 (800-2½)	1900-3 1210 (1300-3)



# HI-ILS or LOC/DME Z RWY 16

SC-3, 22 APR 2021 to 20 MAY 2021

SC-3, 22 APR 2021 to 20 MAY 2021