

HI-ILS or LOC/DME Z RWY 34

LOC I-OSQ 110.7	APCH CRS 338°	Rwy Ldg 11,550 TDZE 660 Arprt Elev 690
---------------------------	-------------------------	--

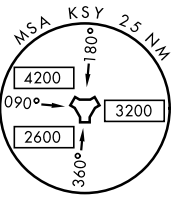
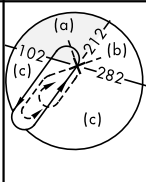
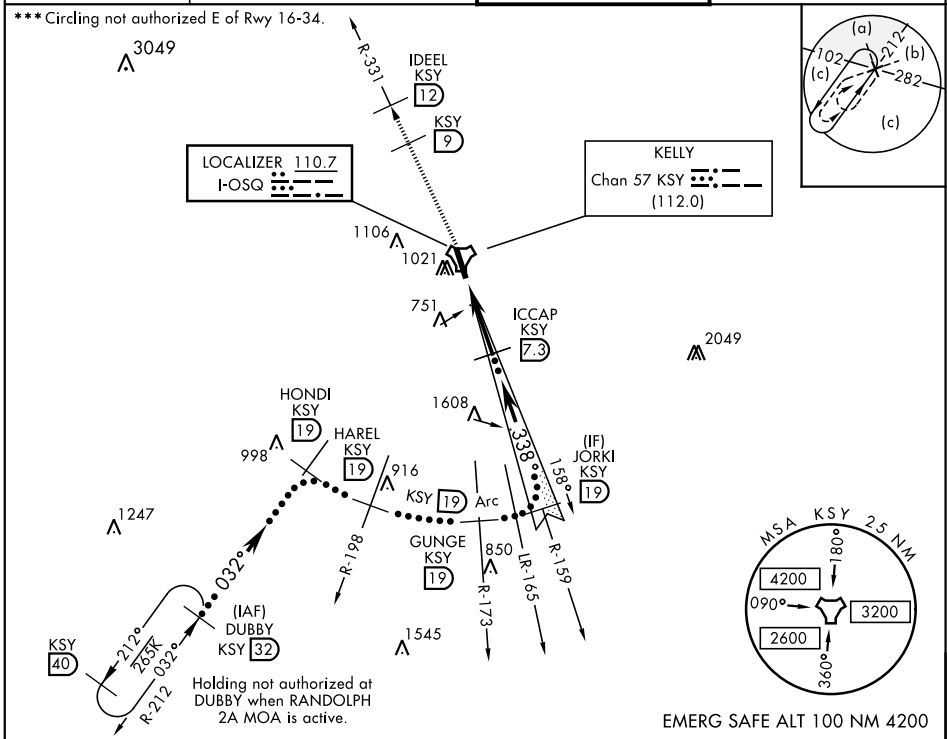
JAL-371 [USAF]

KELLY FLD (KSKF)

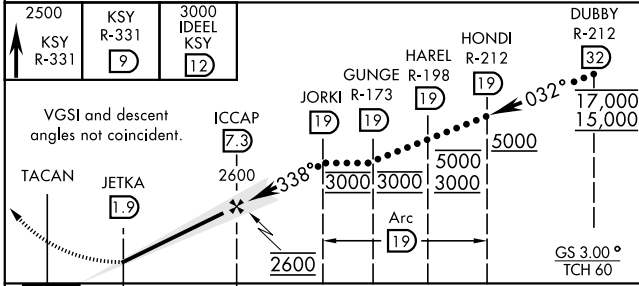
▽ * When ALS inop, increase RVR to 40 and vis to ¾ mile.
 ** When ALS inop, increase RVR to 55 and vis to 1 mile.

ALSF-1 **(A1)** MISSED APPROACH: Climbing to 2500 via KSY TACAN R-331 until 9 DME, cross 9 DME at 2500, then continue climb to 3000 to IDEEL/12.0 DME. Expect ATC instructions.

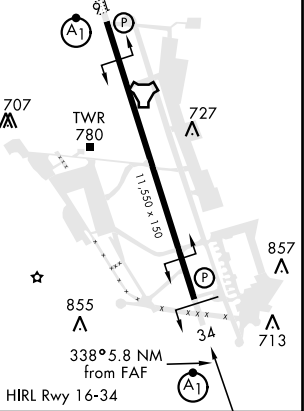
ATIS 120.45 273.5	SAN ANTONIO APP CON 118.05 353.5	KELLY TOWER 124.3 322.35	GND CON 121.8 289.4
-----------------------------	--	------------------------------------	-------------------------------



EMERG SAFE ALT 100 NM 4200



ELEV 690	TDZE 660
----------	----------



CATEGORY	C	D	E
S-ILS 34*	860/24	200	(200-½)
S-LOC/DME 34**	1040/35	380	(400-¾)
CIRCLING***	1360-1¾ 670 (700-1¾)	1440-2½ 750 (800-2½)	1900-3 (1300-3)

HI-ILS or LOC/DME Z RWY 34

SC-3, 22 APR 2021 to 20 MAY 2021

SC-3, 22 APR 2021 to 20 MAY 2021