

HI-TACAN Z RWY 16

TACAN KSY Chan 57	APCH CRS 151°	Rwy ldg 11,550 TDZE 690 Arprt Elev 690
----------------------	------------------	--

JAL-371 [USAF]

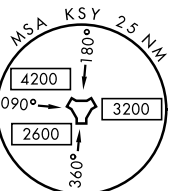
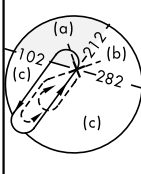
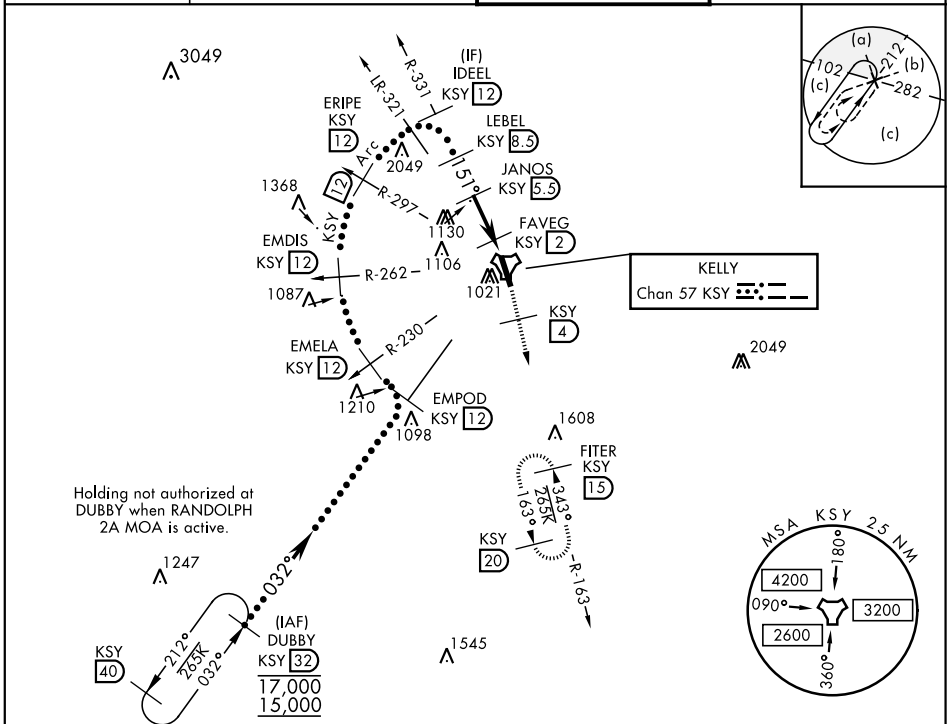
KELLY FLD (KSKF)

▼ * When ALS inop, increase RVR to 60 and vis to 1 1/8 miles.
 ** Circling not authorized E of Rwy 16-34.



MISSED APPROACH: Climb to 2500 via KSY TACAN R-163 until 4 DME, then continue climb to 3000 to FITER/15 DME and hold.

ATIS 120.45 273.5	SAN ANTONIO APP CON 118.05 353.5	KELLY TOWER 124.3 322.35	GND CON 121.8 289.4
-----------------------------	--	------------------------------------	-------------------------------

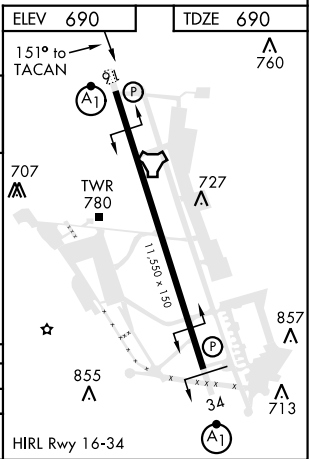
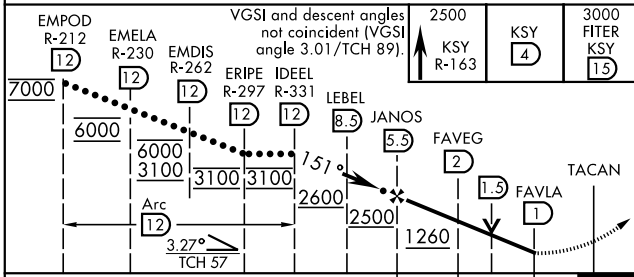


Holding not authorized at DUBBY when RANDOLPH 2A MOA is active.

SC-3, 22 APR 2021 to 20 MAY 2021

SC-3, 22 APR 2021 to 20 MAY 2021

EMERG SAFE ALT 100 NM 4200	EMPOD R-212	EMELA R-230	EMDIS R-262	ERIPLE R-297	IDEEL R-331	2500 KSY R-163	3000 FITER KSY 15
----------------------------	-------------	-------------	-------------	--------------	-------------	----------------	-------------------



CATEGORY	C	D	E
S-16*	1100/40	410	(500-3/4)
CIRCLING**	1360-134 670 (700-134)	1440-21/2 750 (800-21/2)	1900-3 1210 (1300-3)

HI-TACAN Z RWY 16