

HI-TACAN Z RWY 34

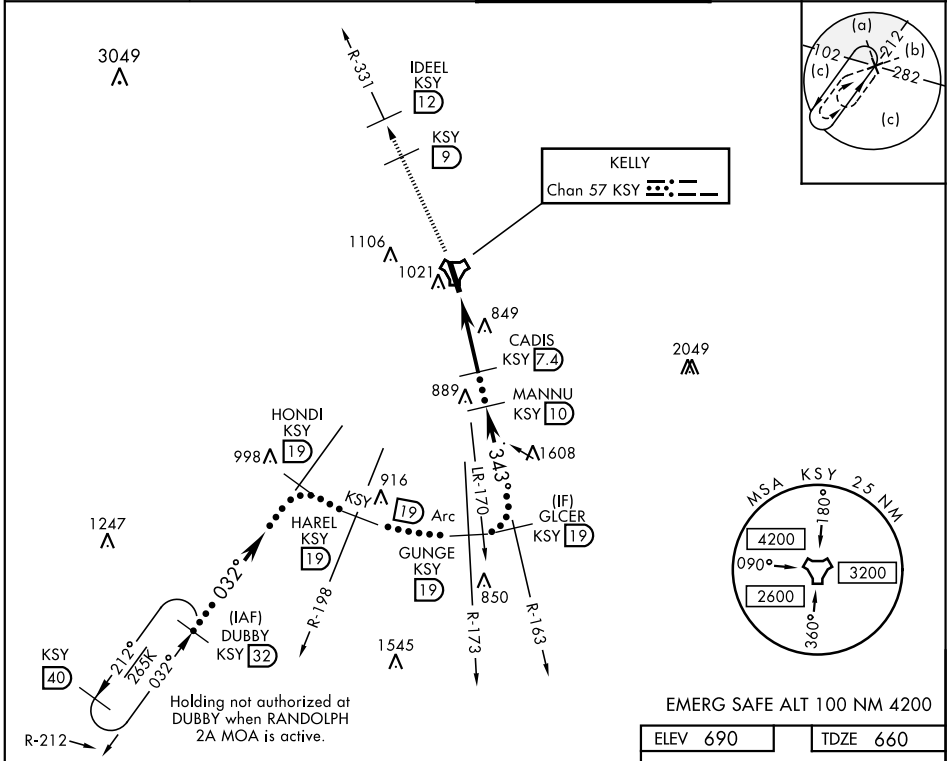
TACAN KSY Chan 57	APCH CRS 343°	Rwy ldg 11,550 TDZE 660 Arprt Elev 690	JAL-371 [USAF]	KELLY FLD (KSKF)
----------------------	------------------	--	----------------	------------------

▼ * When ALS inop, increase vis to 1 3/8 miles.
 ** Circling not authorized E of Rwy 16-34.



MISSED APPROACH: Climb to 2500 via KSY TACAN R-331 until 9 DME, cross 9 DME at 2500, then continue climb to 3100 to IDEEL/12 DME. Expect ATC instructions.

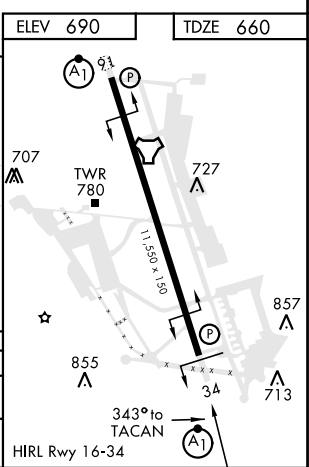
ATIS 120.45 273.5	SAN ANTONIO APP CON 118.05 353.5	KELLY TOWER 124.3 322.35	GND CON 121.8 289.4
-----------------------------	--	------------------------------------	-------------------------------



SC-3, 22 APR 2021 to 20 MAY 2021

SC-3, 22 APR 2021 to 20 MAY 2021

2500 KSY R-331 9	3100 IDEEL KSY 12	VGSI and descent angles not coincident (VGSI angle 3.02/TCH 93).		DUBBY R-212 32
TACAN	FRSTY 1.9	CADIS 7.4	MANNU 10	HONDI R-212 19
0.5		5.5 NM		
CATEGORY	C	D	E	
S-34 *	1120/45	460	(500-7/8)	
CIRCLING **	1360-13/4 670 (700-13/4)	1440-2 1/2 750 (800-2 1/2)	1900-3 1210 (1300-3)	



HI-TACAN Z RWY 34