

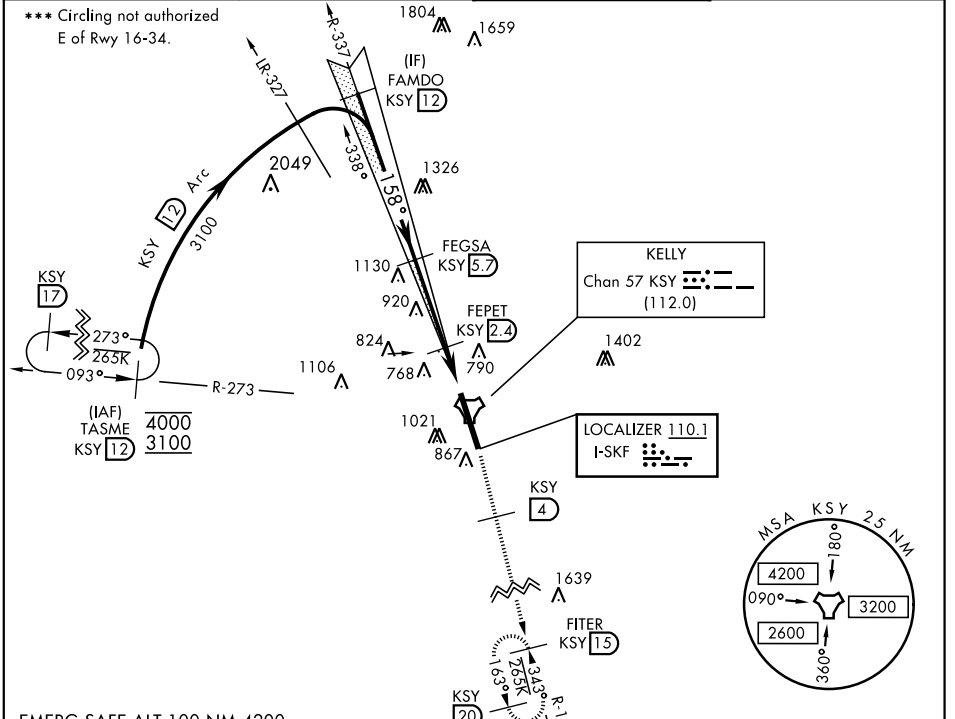
ILS or LOC/DME Y RWY 16

LOC I-SKF 110.1	APCH CRS 158°	Rwy Ldg 11,550 TDZE 690 Arprt Elev 690	AL-371 [USAF]	KELLY FLD (KSKF)
---------------------------	-------------------------	---	---------------	------------------

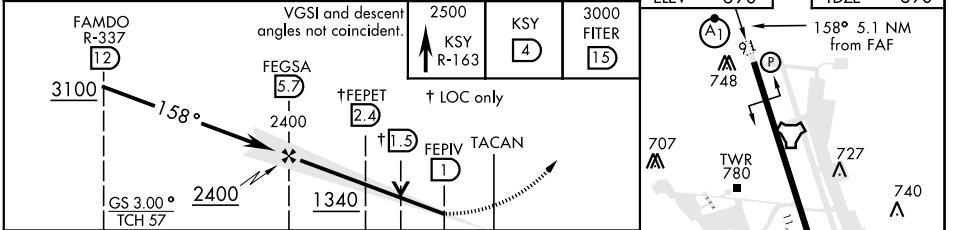
▼*When ALS inop, increase RVR to 40 and vis to ¼ mile.
 **When ALS inop, increase CAT AB RVR to 55 and vis to 1 mile, CAT CDE RVR to 60 and vis to 1½ miles.

 ALSF-1 MISSED APPROACH: Climb to 2500 via KSY R-163 until 4 DME, then continue climb to 3000 to FITER/15 DME and hold. Non-TACAN equipped aircraft expect alternate missed approach instructions.

ATIS 120.45 273.5	SAN ANTONIO APP CON 118.05 353.5	KELLY TOWER 124.3 322.35	GND CON 121.8 289.4
-----------------------------	--	------------------------------------	-------------------------------



EMERG SAFE ALT 100 NM 4200



	ELEV 690	TDZE 690
	A1	P
	707	727
	TWR 780	740
	748	713
	857	713
	855	713
	34	713
	HIRL Rwy 16-34	

SAN ANTONIO, TEXAS 29° 23' N-98° 35' W KELLY FLD (KSKF)

ILS or LOC/DME Y RWY 16