

ILS or LOC/DME Y RWY 34

LOC I-OSQ 110.7	APCH CRS 338°	Rwy Ldg 11,550 TDZE 660 Arprt Elev 690
---------------------------	-------------------------	--

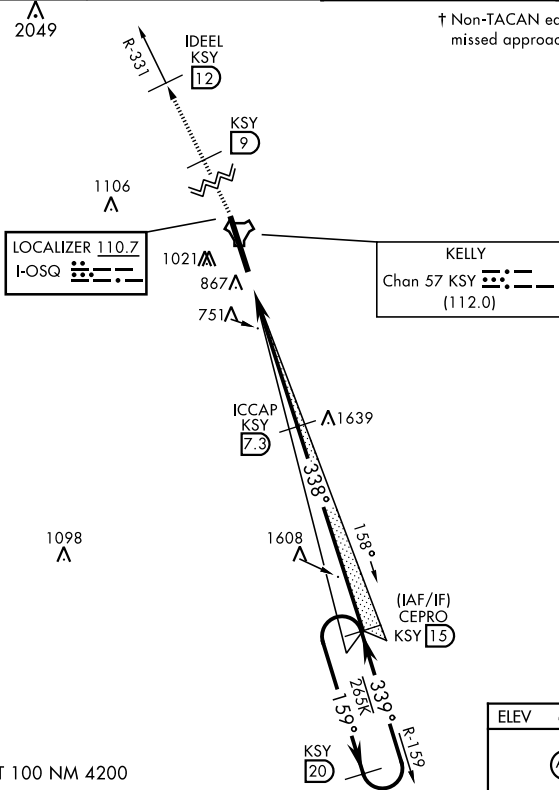
AL-371 [USAF]

KELLY FLD (KSKF)

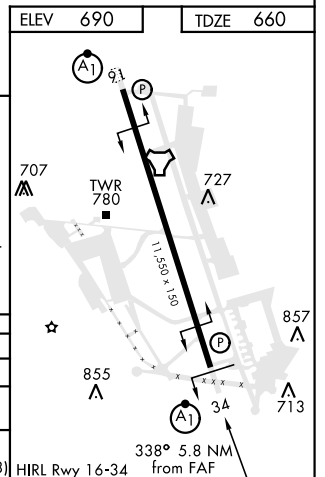
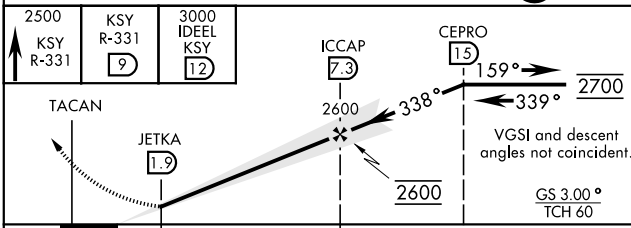
▼ ** When ALS inop, increase RVR to 40 and vis to ¼ mile.
 *** Circling not authorized E of Rwy 16-34.
 † MISSED APPROACH: Climb to 2500 via KSY TACAN R-331 until 9 DME, cross 9 DME at 2500, then continue climb to 3000 to IDEEL/12 DME. Expect ATC instructions.

ATIS 120.45 273.5	SAN ANTONIO APP CON 118.05 353.5	KELLY TOWER 124.3 322.35	GND CON 121.8 289.4
-----------------------------	--	------------------------------------	-------------------------------

† Non-TACAN equipped aircraft expect alternate missed approach instructions.



EMERG SAFE ALT 100 NM 4200



CATEGORY	A	B	C	D	E
S-ILS 34*	860/24		200	(200-½)	
S-LOC/DME 34**	1040/24	380 (400-½)	1040/35	380	(400-¾)
CIRCLING ***	1220-1 530 (600-1)	1300-1 610 (700-1)	1360-1¾ 670 (700-1¾)	1440-2½ 750 (800-2½)	1900-3 1210 (1300-3)

ILS or LOC/DME Y RWY 34

SC-3, 22 APR 2021 to 20 MAY 2021

SC-3, 22 APR 2021 to 20 MAY 2021