

SAN ANTONIO, TEXAS

RNAV (GPS) RWY 16

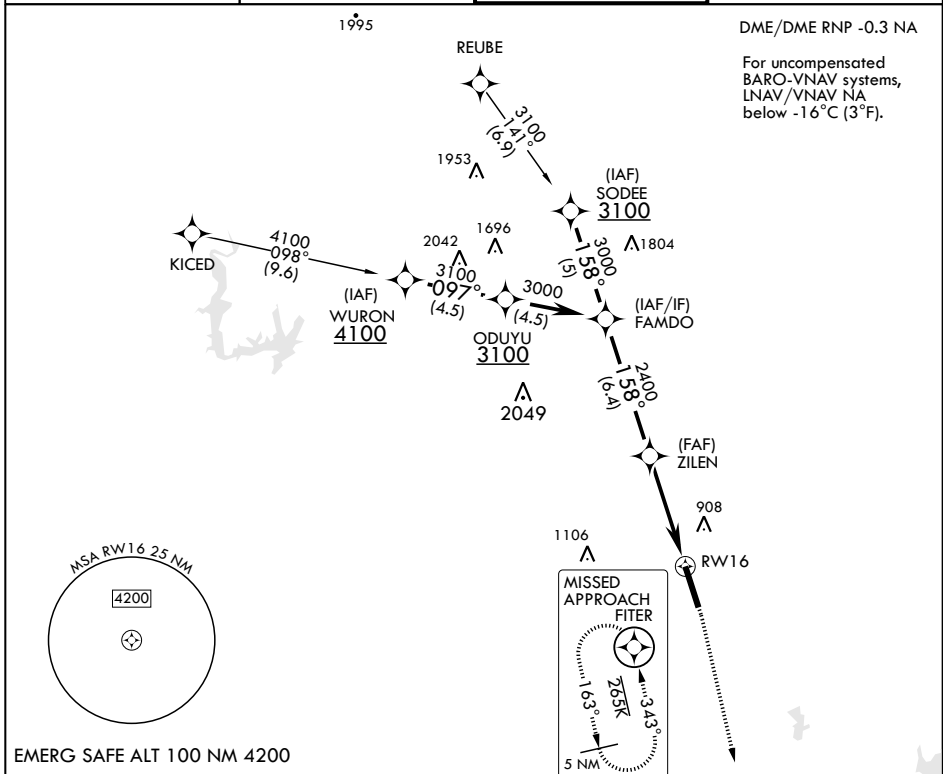
APCH CRS	Rwy Idg	11,550
158°	TDZE	690
	Arprt Elev	690

AL-371 (USAF)

KELLY FIELD (KSKF)

<p>▼ * When ALS inop, increase all CAT vis to 1 3/4 miles. ** When ALS inop, increase CAT AB RVR to 55, and vis to 1 mile; CAT CDE vis to 1 5/8 miles. *** Circling not authorized E of Rwy 16-34.</p>	<p>ALSF-1</p>	<p>MISSED APPROACH: Climb to 1500 then climbing right turn to 3000 direct FITER and hold.</p>
--	---------------	---

<p>ATIS 120.45 273.5</p>	<p>SAN ANTONIO APP CON 118.05 353.5</p>	<p>KELLY TOWER 124.3 322.35</p>	<p>GND CON 121.8 289.4</p>
------------------------------	---	-------------------------------------	--------------------------------



DME/DME RNP -0.3 NA

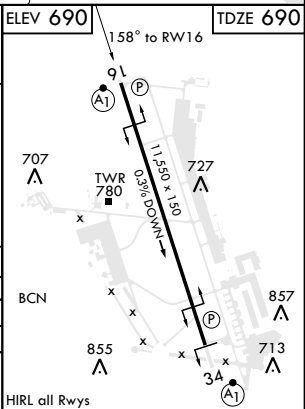
For uncompensated BARO-VNAV systems, LNAV/VNAV NA below -16°C (3°F).

SC-3, 22 APR 2021 to 20 MAY 2021

SC-3, 22 APR 2021 to 20 MAY 2021

EMERG SAFE ALT 100 NM 4200

FAMD0	VGS1 and descent angles not coincident.		1500	3000	FITER	ELEV 690	TDZE 690
3000	ZILEN		†NNAV only			158° to RWY 16	
GP 3.05° TCH 57	2400		†1.5 NM to RWY 16			RWY 16	
	-5.1 NM						
CATEGORY	A	B	C	D	E		
LNAV/VNAV DA*	1080/35		390		(400-%)		
LNAV MDA**	1260/24 570 (600-1/2)		1260-1 1/4 570 (600-1 1/4)				
CIRCLING***	1260-1 570 (600-1)	1300-1 610 (700-1)	1360-1 3/4 670 (700-1 3/4)	1440-2 1/2 750 (800-2 1/2)	1900-3 1210 (1300-3)		



SAN ANTONIO, TEXAS
Amdt 1 10OCT19

29°23'N - 98°35'W

KELLY FIELD (KSKF)

RNAV (GPS) RWY 16