

SAN ANTONIO, TEXAS

# RNAV (GPS) RWY 34

APCH CRS <b>338°</b>	Rwy Idg <b>11,550</b>
	TDZE <b>660</b>
	Arprt Elev <b>690</b>

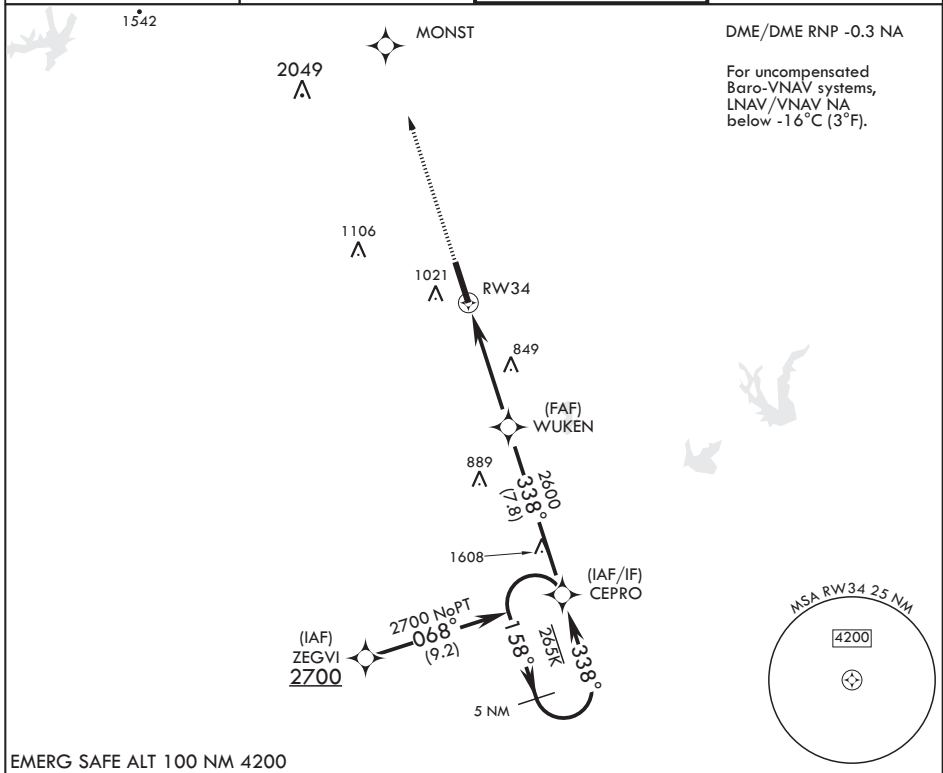
AL-371 (USAF)

KELLY FIELD (KSKF)

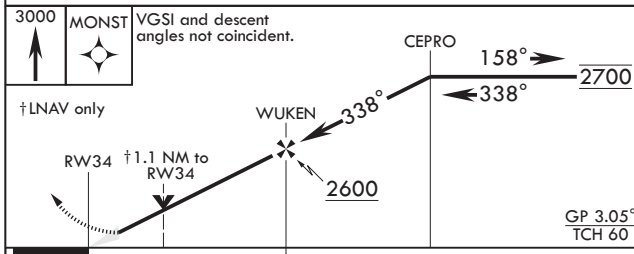
**▼** \* When ALS inop, increase CAT ABCDE vis to 1 1/2 miles  
 \*\* When ALS inop, increase CAT AB RVR to 55, vis to 1 mile; CAT CDE vis to 1 1/4 miles.  
 \*\*\* Circling NA E of Rwy 16-34.

ALSF-1  MISSED APPROACH: Climb to 3000 direct MONST. Expect ATC instructions.

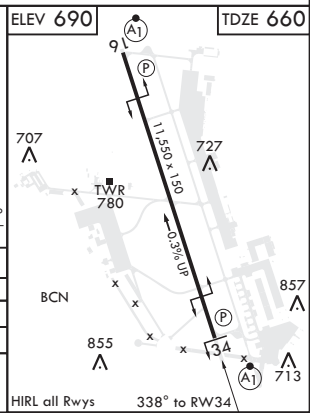
ATIS <b>120.45 273.5</b>	SAN ANTONIO APP CON <b>118.05 353.5</b>	KELLY TOWER <b>124.3 322.35</b>	GND CON <b>121.8 289.4</b>
-----------------------------	--	------------------------------------	-------------------------------



EMERG SAFE ALT 100 NM 4200



CATEGORY	A	B	C	D	E
LNAV/VNAV DA*	1100/40		440	(500-3/4)	
LNAV MDA**	1100/24	440 (500-1/2)	1100/40	440	(500-3/4)
<b>C</b> CIRCLING***	1220-1 530 (600-1)	1300-1 610 (700-1)	1360-1 3/4 670 (700-1 3/4)	1440-2 1/2 750 (800-2 1/2)	1900-3 1210 (1300-3)



SAN ANTONIO, TEXAS  
Amdt 1 10OCT19

29°23'N - 98°35'W

KELLY FIELD (KSKF)

# RNAV (GPS) RWY 34

SC-3, 22 APR 2021 to 20 MAY 2021

SC-3, 22 APR 2021 to 20 MAY 2021