

TACAN Y RWY 16

TACAN KSY Chan 57	APCH CRS 151°	Rwy Ldg 11,550 TDZE 690 Arprt Elev 690
----------------------	------------------	---

AL-371 [USAF]

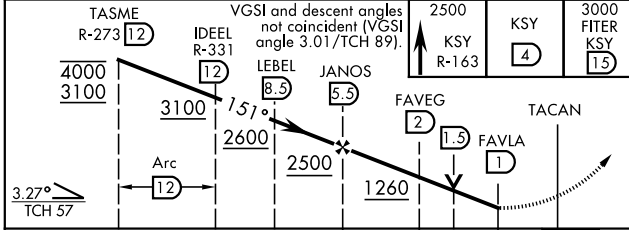
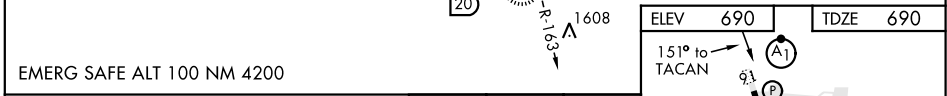
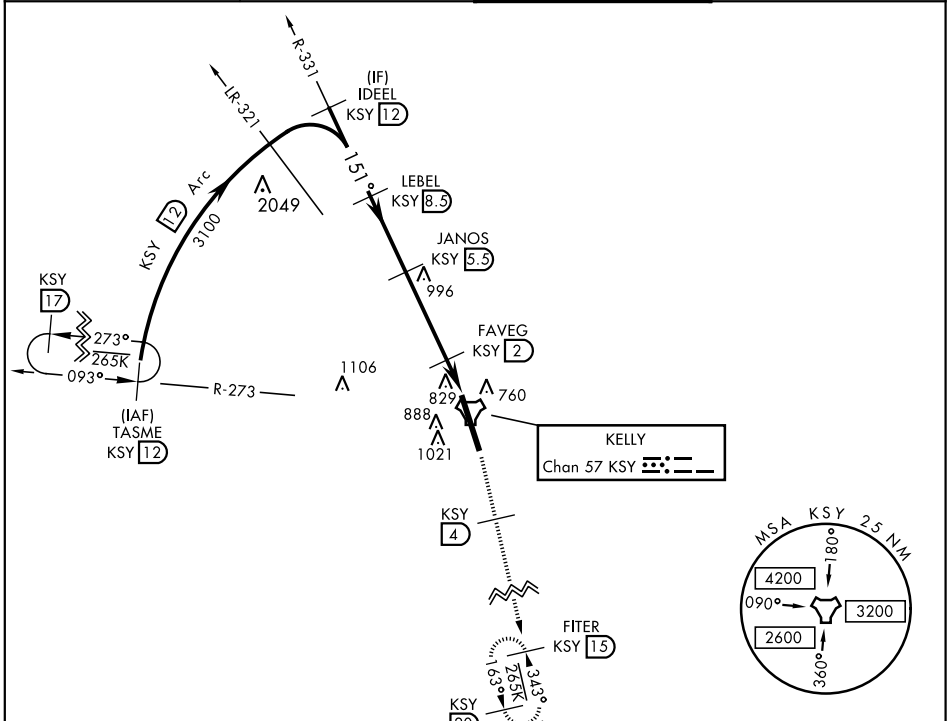
KELLY FLD (KSKF)

▼ * When ALS inop, increase CAT AB RVR to 55 and vis to 1 mile, CAT CDE RVR to 60 and vis to 1½ miles.
 ** Circling not authorized E of Rwy 16-34.

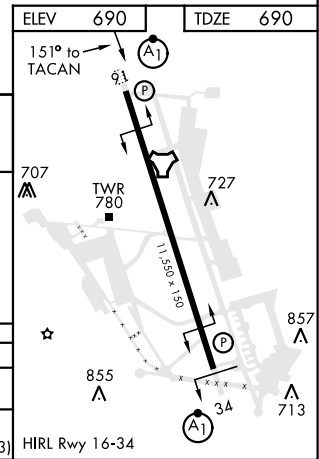
ALS F-1

MISSED APPROACH: Climb on 2500 via KSY R-163 until 4 DME, then climb to 3000 to FITER/ 15 DME and hold.

ATIS 120.45 273.5	SAN ANTONIO APP CON 118.05 353.5	KELLY TOWER 124.3 322.35	GND CON 121.8 289.4
----------------------	-------------------------------------	-----------------------------	------------------------



CATEGORY	A	B	C	D	E
S-16 *	1100/24	410 (500-½)	1100/40	410	(500-¾)
CIRCLING **	1220-1 530 (600-1)	1300-1 610 (700-1)	1360-1¼ 670 (700-1¾)	1440-2½ 750 (800-2½)	1900-3 1210(1300-3)



SAN ANTONIO, TEXAS 29° 23' N-98° 35' W KELLY FLD (KSKF)

Amtd 1 13AUG20

TACAN Y RWY 16

SC-3, 22 APR 2021 to 20 MAY 2021

SC-3, 22 APR 2021 to 20 MAY 2021