

SIoux FALLS, SOUTH DAKOTA

HI-ILS RWY 21

LOC I-JOU 111.1	APCH CRS 210°	Rwy ldg 8999 THRE 1430 Arprt Elev 1430
---------------------------	-------------------------	--

JAL-396 [USAF]

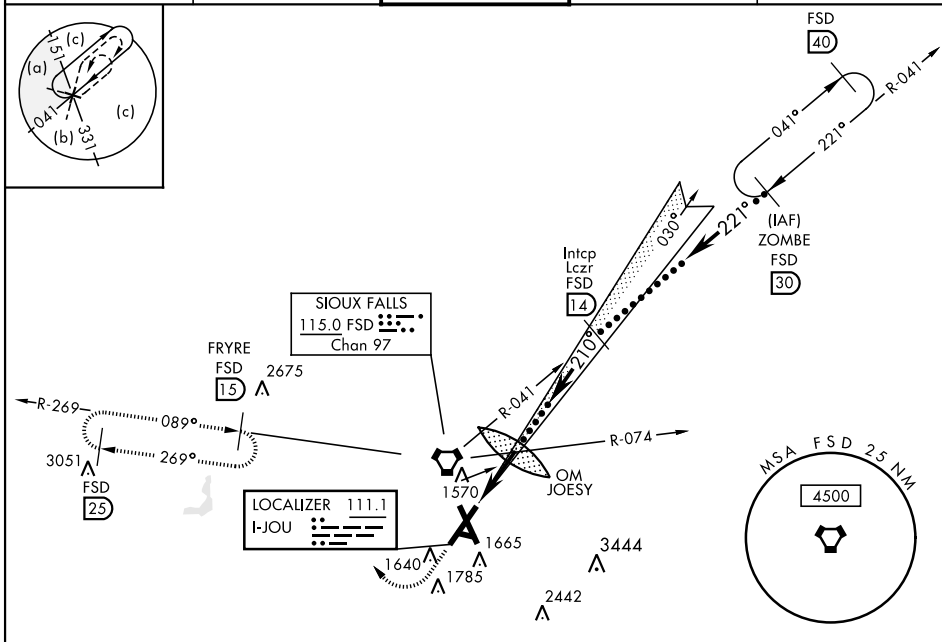
SIoux FALLS/JOE FOSS FIELD (KFSD)

▼ *When ALS inop, increase RVR to 40 and vis to 3/4 miles.
 **When ALS inop, increase CAT CD vis to 1 3/4 miles, CAT E vis to 1 1/2 miles.



MISSED APPROACH: Climb to 3400 then climbing right turn to 5000 via heading 300° and FSD R-269 to FRYRE 15 DME and hold.

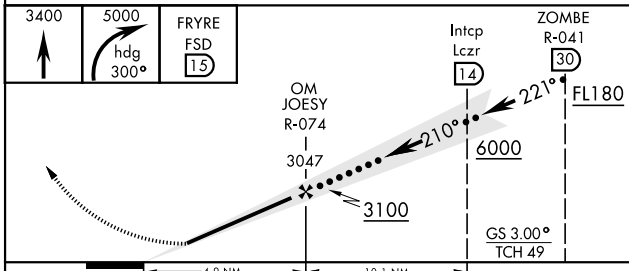
ATIS 126.6	SIoux FALLS APP CON 125.8 126.9 353.6	SIoux FALLS TOWER ★ 118.3 0 257.8	GND CON 121.9 348.6	ASR
----------------------	---	---	-------------------------------	-----



NC-1, 22 APR 2021 to 20 MAY 2021

NC-1, 22 APR 2021 to 20 MAY 2021

EMERG SAFE ALT 100 NM 4600



ELEV 1430	THRE 1430
210° 4.9 NM from JOSEY INT/OM A5	
TDZL/CL Rwy 21 REIL Rwy 15-33 MIRL Rwy 9-27 HIRL Rwy 3-21 and 15-33	
FAF to MAP 4.9 NM	
Knots	120 140 160 180 200
Min:Sec	2:27 2:06 1:50 1:38 1:28

CATEGORY	C	D	E
S-ILS 21*	1630/18 200 (200-1/2)		1630/24 200 (200-1/2)
S-LOC 21**	1920/50 490 (500-1)		1920/60 490 (500-1 1/2)
CIRCLING	1980-1 1/2 550 (600-1 1/2)	2040-2 610 (700-2)	2300-3 870 (900-3)

SIoux FALLS, SOUTH DAKOTA
Amdt 6B 22AUG13

43° 35'N-96° 44'W

SIoux FALLS/JOE FOSS FIELD (KFSD)

HI-ILS RWY 21