

SIoux FALLS, SOUTH DAKOTA

HI-ILS or LOC RWY 3

LOC I-FSD 109.9	APCH CRS 030°	Rwy ldg 8999 TDZE 1424 Arpt Elev 1430
---------------------------	-------------------------	---

JAL-396 [USAF]

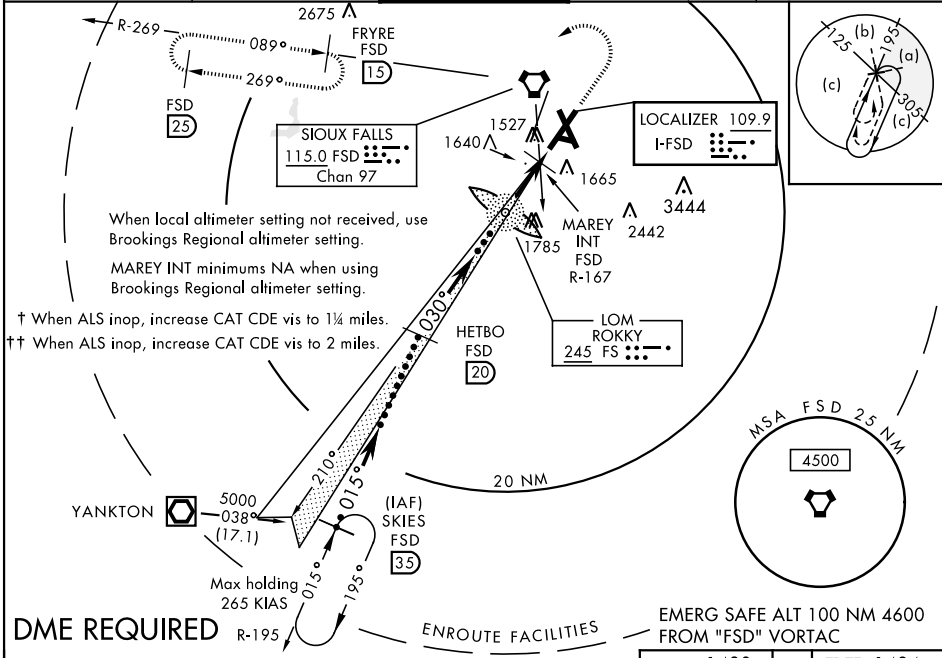
SIoux FALLS/JOE FOSS FIELD (KFSD)

- * When ALS inop, increase CAT E vis to 3/4 mile.
- ** When ALS inop, increase CAT E vis to 1 1/4 mile.
- *** When ALS inop, increase CAT E vis to 1 1/2 mile.

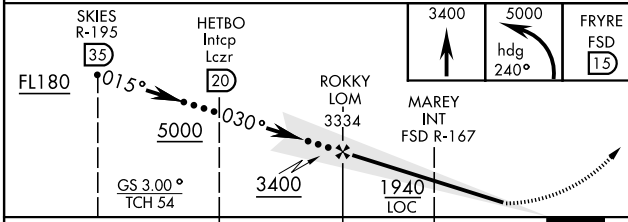


MISSED APPROACH: Climb to 3400, then climbing left turn to 5000 via heading 240° and via FSD VORTAC R-269 to FRYRE (FSD 1.5 DME) and hold.

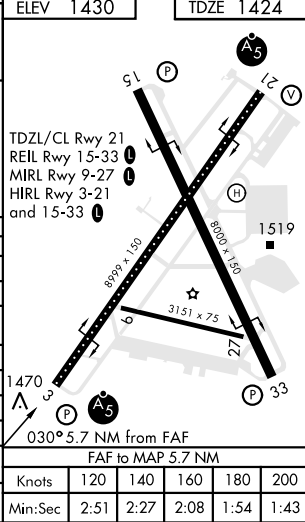
ATIS 126.6	SIoux FALLS APP CON 125.8 126.9 353.6	SIoux FALLS TOWER * 118.3 0 257.8	GND CON 121.9 348.6	ASR
----------------------	---	---	-------------------------------	-----



DME REQUIRED



CATEGORY	C	D	E
S-ILS 3*	1674/24	250	(300-1/2)
S-LOC 3**	1940/50 516 (600-1)	1940/60 516 (600-1 1/2)	
CIRCLING	1980-1 1/2 550 (600-1 1/2)	2040-2 610 (700-2)	2300-3 870 (900-3)
	MAREY FIX MINIMA		
S-LOC 3***	1780/24 356 (400-1/2)	1780/40 356 (400-3/4)	
BROOKINGS REGIONAL ALTIMETER SETTING			
S-ILS 3 †	1805/40	381	(400-3/4)
S-LOC 3 ††	2080/60 656 (700-1 1/2)	2080-1 1/2 656 (700-1 1/2)	2080-1 3/4 656 (700-1 3/4)
	2120-2 690 (700-2)	2280-2 3/4 850 (900-2 3/4)	2440-3 1010 (1100-3)



SIoux FALLS, SOUTH DAKOTA

43° 35' N - 96° 44' W

SIoux FALLS/JOE FOSS FIELD (KFSD)

Amdt 9A 17OCT13

HI-ILS or LOC RWY 3

NC-1, 22 APR 2021 to 20 MAY 2021

NC-1, 22 APR 2021 to 20 MAY 2021