

SIoux FALLS, SOUTH DAKOTA

HI-TACAN RWY 15

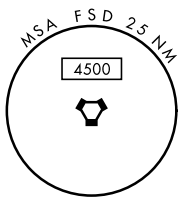
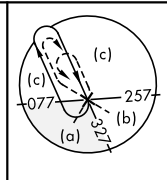
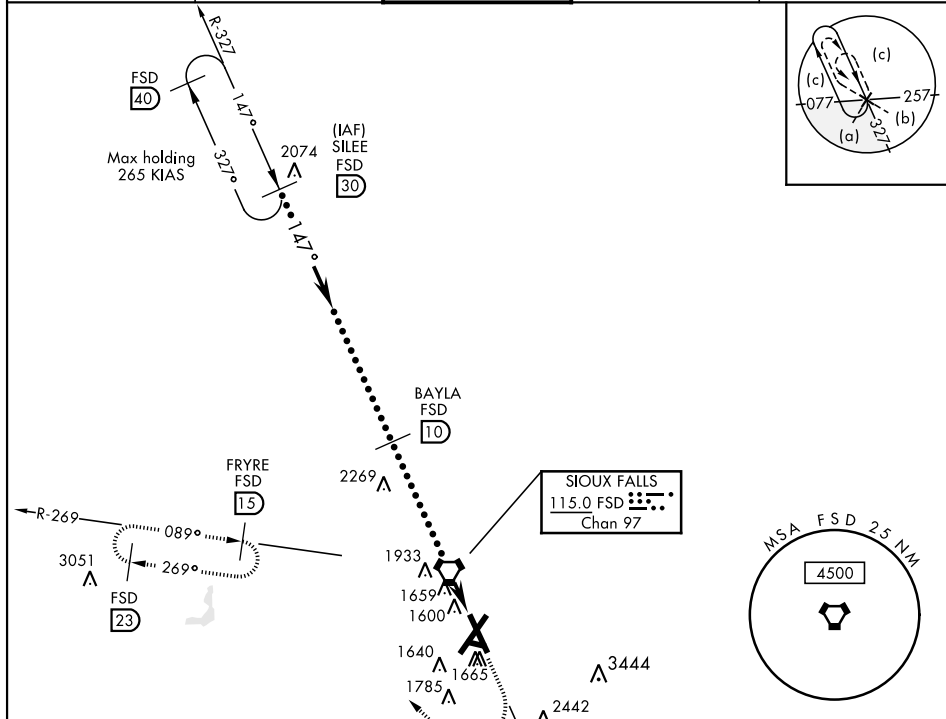
VORTAC FSD 115.0 Chan 97	APCH CRS 147°	Rwy Ldg THRE 1429 Arprt Elev 1430
--	-------------------------	---

JAL-396 [USAF]

SIoux FALLS/JOE FOSS FIELD (KFSD)

▽ MISSED APPROACH: Climb to 5000 then right turn via heading 320° and FSD R-269 to FRYRE 15 DME and hold.

ATIS 126.6	SIoux FALLS APP CON 125.8 126.9 353.6	SIoux FALLS TOWER ★ 118.3 0 257.8	GND CON 121.9 348.6	ASR
----------------------	---	---	-------------------------------	-----

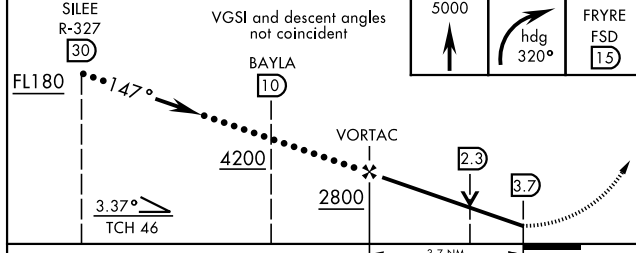


EMERG SAFE ALT 100 NM 4600

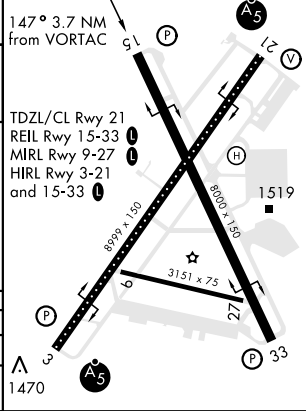
SILEE R-327 (30) VGS1 and descent angles not coincident

FL180 147° 4200 2800 3.7 NM

TCH 46



ELEV 1430	THRE 1429
-----------	-----------



CATEGORY	C	D	E
S-15	1920-1 3/8	491	(500-1 3/8)
CIRCLING	1980-1 1/2 550 (600-1 1/2)	2040-2 610 (700-2)	2300-3 870 (900-3)

SIoux FALLS, SOUTH DAKOTA
Amdt 8B 22AUG13

43° 35' N-96° 44' W

SIoux FALLS/JOE FOSS FIELD (KFSD)

HI-TACAN RWY 15

NC-1, 22 APR 2021 to 20 MAY 2021

NC-1, 22 APR 2021 to 20 MAY 2021