

LOC I-JOU 111.1	APP CRS 210°	Rwy Idg 8999	TDZE 1430
		Apt Elev 1430	

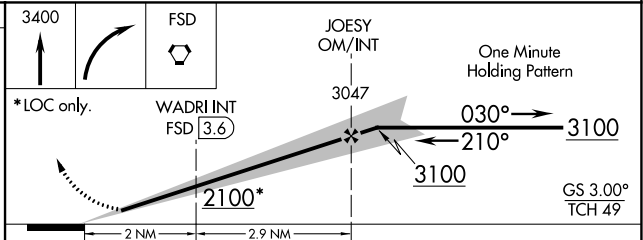
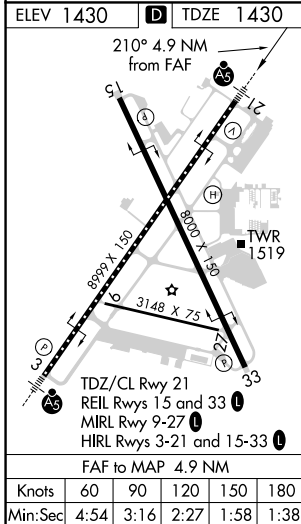
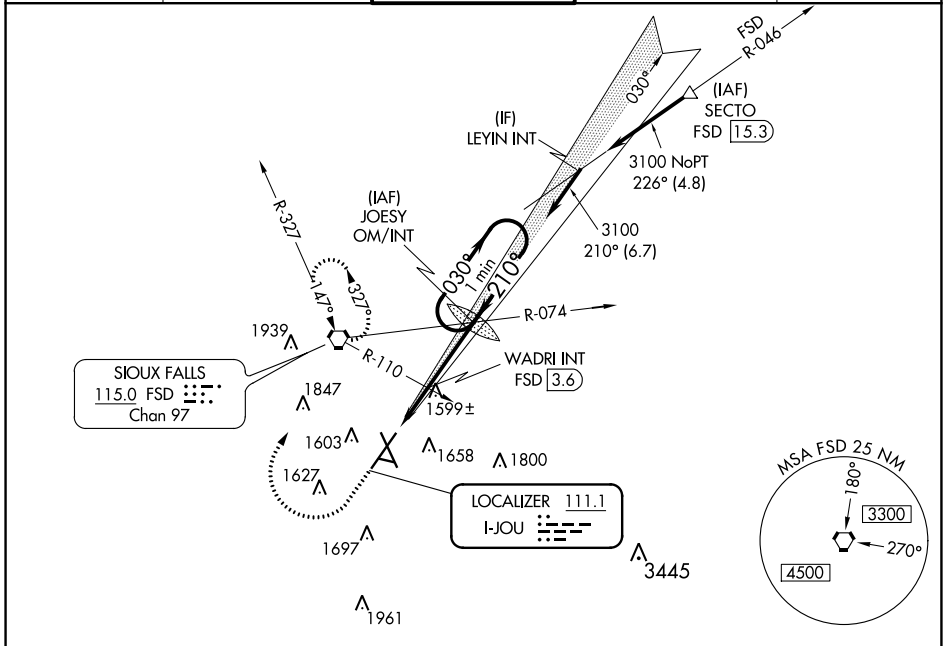
ILS or LOC RWY 21

JOE FOSS FLD (FSD)

ASR -31°C For inoperative MALS/R increase S-ILS all Cats visibility to 3/4 mile, increase S-LOC 21 Cat C/D visibility to 1 1/8 mile. When using WADRI FIX minimums, increase S-LOC 21 Cat C/D visibility to 1 mile.

MALS/R MISSED APPROACH: Climb to 3400 then right turn direct FSD VORTAC and hold.

ATIS 126.6	SIoux FALLS APP CON * 125.8 284.725	SIoux FALLS TOWER * 118.3 (CTAF) 0 257.8	GND CON 121.9 348.6	UNICOM 122.95
----------------------	---	--	-------------------------------	-------------------------



CATEGORY	A	B	C	D
S-ILS 21	1630/18 200 (200-1/2)			
S-LOC 21	2100/24	670 (700-1/2)	2100-1 1/2	670 (700-1 1/2)
C CIRCLING	2100-1	670 (700-1)	2100-1 3/4	2200-2 1/2
			670 (700-1 3/4)	770 (800-2 1/2)
WADRI FIX MINIMUMS				
S-LOC 21	1800/24	370 (400-1/2)	1800/35	370 (400-3/8)
C CIRCLING	1960-1	1980-1	2060-1 3/4	2200-2 1/2
	530 (600-1)	550 (600-1)	630 (700-1 3/4)	770 (800-2 1/2)

NC-1, 22 APR 2021 to 20 MAY 2021

NC-1, 22 APR 2021 to 20 MAY 2021