

WAAS CH 40135 W33A	APP CRS 330°	Rwy Idg TDZE Apt Elev	8000 1424 1430
--	------------------------	-----------------------------	---

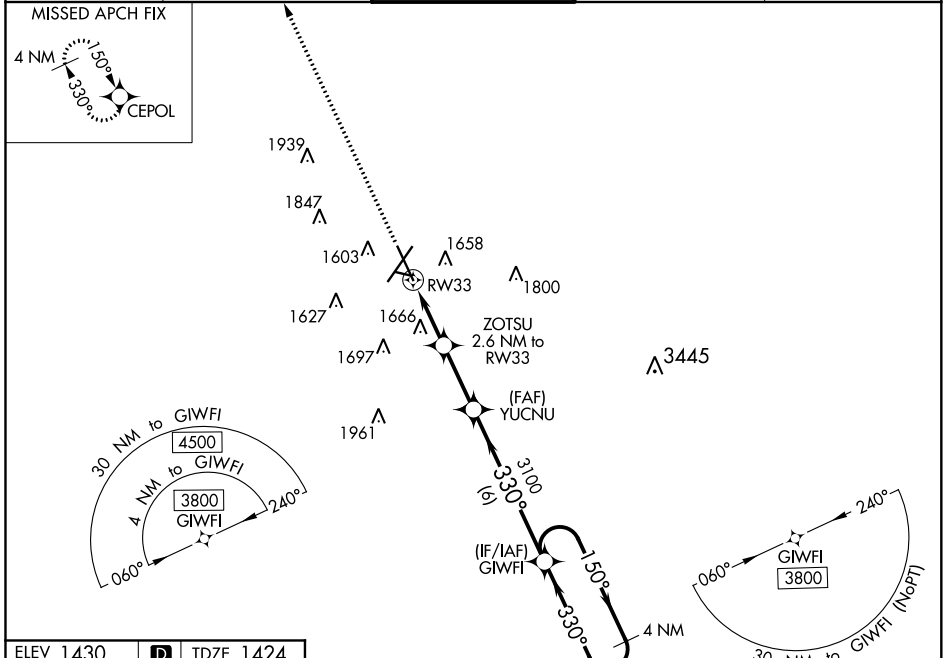
RNAV (GPS) RWY 33

JOE FOSS FLD (F'SD)

ASR
 -31°C
 For uncompensated Baro-VNAV systems, procedure NA below -22°C (-7°F) or above 54°C (130°F). Rwy 33 helicopter visibility reduction below 3/4 SM NA.
 DME/DME RNP-0.3 NA.

MISSED APPROACH:
 Climb to 3800 direct
 CEPOL and hold.

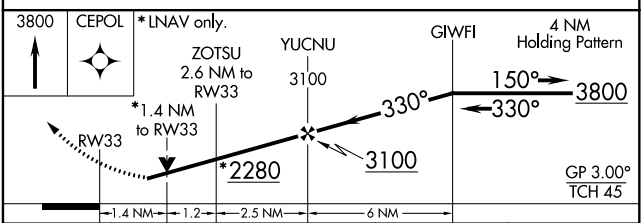
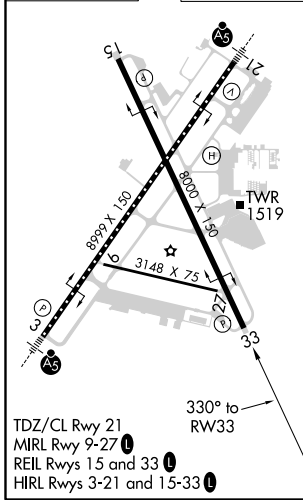
ATIS 126.6	SIoux FALLS APP CON * 125.8 284.725	SIoux FALLS TOWER * 118.3(CTAF) 0 257.8	GND CON 121.9 348.6	UNICOM 122.95
----------------------	---	---	-------------------------------	-------------------------



NC-1, 22 APR 2021 to 20 MAY 2021

NC-1, 22 APR 2021 to 20 MAY 2021

ELEV 1430	D	TDZE 1424
-----------	----------	-----------



CATEGORY	A	B	C	D
LPV DA		1729-1	305 (300-1)	
LNAV/VNAV DA		1974-1 $\frac{1}{8}$	550 (600-1 $\frac{1}{8}$)	
LNAV MDA	1920-1	496 (500-1)	1920-1 $\frac{1}{8}$	496 (500-1 $\frac{1}{8}$)
C CIRCLING	1960-1 530 (600-1)	1980-1 550 (600-1)	2060-1 $\frac{3}{4}$ 630 (700-1 $\frac{3}{4}$)	2200-2 $\frac{1}{2}$ 770 (800-2 $\frac{1}{2}$)