

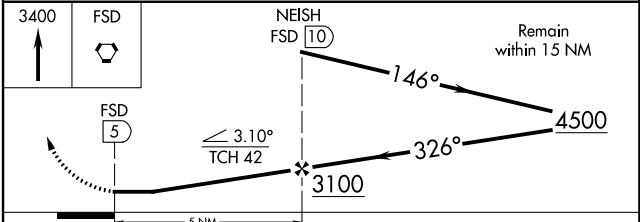
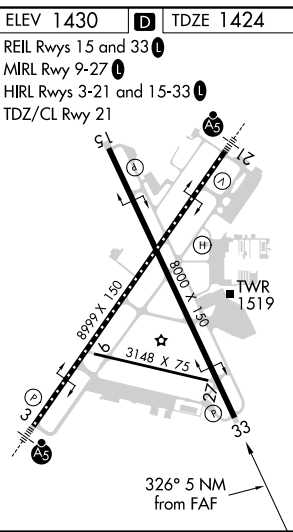
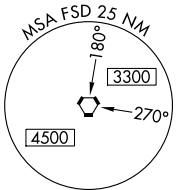
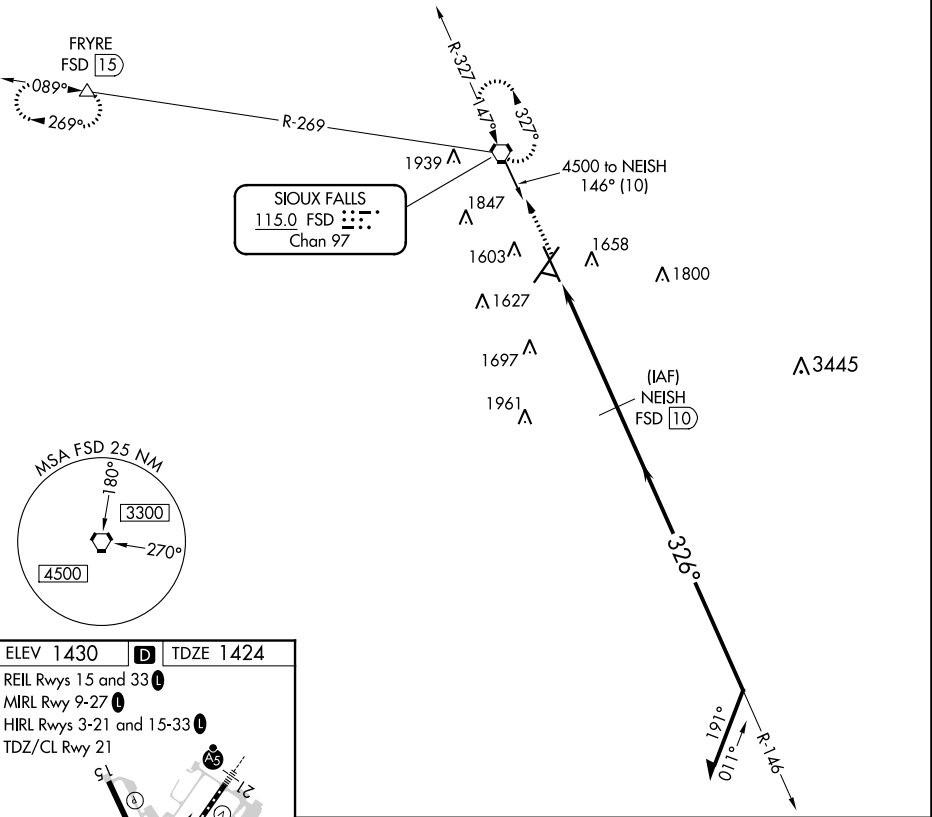
VORTAC FSD 115.0 Chan 97	APP CRS 326°	Rwy Idg 8000 TDZE 1424 Apt Elev 1430
--	------------------------	---

VOR/DME or TACAN RWY 33

JOE FOSS FLD (FSD)

ASR Rwy 33 helicopter visibility reduction below 3/4 SM NA. MISSED APPROACH: Climb to 3400 direct FSD VORTAC and hold. (TACAN aircraft continue climb to 5000 via FSD R-269 to FRYRE 15 DME and hold west, right turns, 089° inbound.)

ATIS 126.6	SIoux FALLS APP CON* 125.8 284.725	SIoux FALLS TOWER* 118.3 (CTAF) 257.8	GND CON 121.9 348.6	UNICOM 122.95
----------------------	--	---	-------------------------------	-------------------------



CATEGORY	A	B	C	D	E
S-33	1940-1	516 (600-1)	1940-1 3/8 516 (600-1 3/8)		
C CIRCLING	1960-1 530 (600-1)	1980-1 550 (600-1)	2060-1 3/4 630 (700-1 3/4)	2200-2 1/2 770 (800-2 1/2)	2300-3 870 (900-3)

NC-1, 22 APR 2021 to 20 MAY 2021

NC-1, 22 APR 2021 to 20 MAY 2021