

LOC/DME I-ATY 111.9 Chan 56	APP CRS 174°	Rwy Idg TDZE Apt Elev	6893 1741 1749
---	------------------------	-----------------------------	---

LOC BC RWY 17

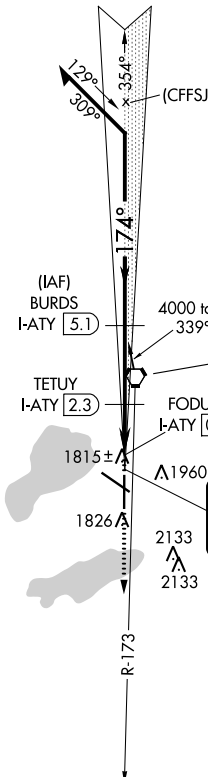
WATERTOWN RGNL (ATY)

DME required.

⚠ MISSED APPROACH: Climb to 4000 on ATY VORTAC R-173 to RIPVE/ATY VORTAC 16.9 DME and hold.

ASOS 126.625	MINNEAPOLIS CENTER 128.5 306.2	UNICOM 123.05 (CTAF) 0
------------------------	--	----------------------------------

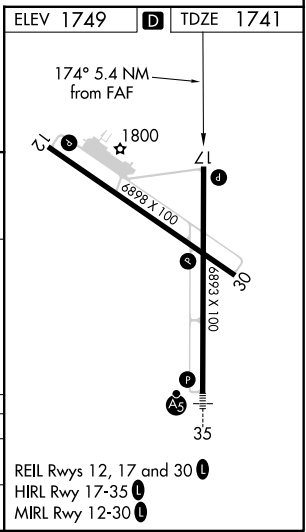
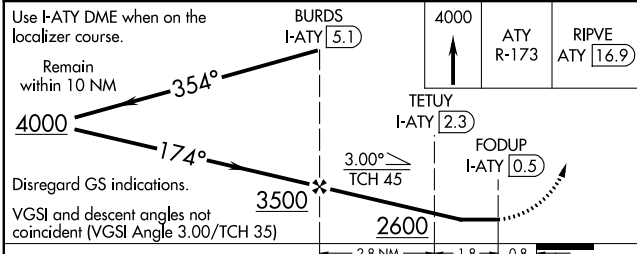
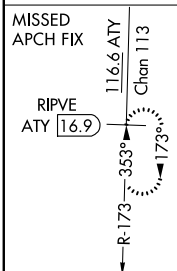
BACK COURSE



⚠ 2875

Procedure NA for arrival on ATY VORTAC airway radials 288 CW 357.

WATERTOWN
116.6 ATY
Chan 113



ELEV 1749	D	TDZE 1741
Use I-ATY DME when on the localizer course.	BURDS I-ATY 5.1	4000 ATY R-173
Remain within 10 NM	TETUY I-ATY 2.3	RIPVE ATY 16.9
Disregard GS indications.	FODUP I-ATY 0.5	
VGSI and descent angles not coincident (VGSI Angle 3.00/TCH 35)		
CATEGORY	A	B
S-17	2080-1	339 (400-1)
CIRCLING	2260-1 511 (600-1)	2500-2¼ 751 (800-2¼)
		2500-2½ 751 (800-2½)

NC-1, 22 APR 2021 to 20 MAY 2021

NC-1, 22 APR 2021 to 20 MAY 2021