

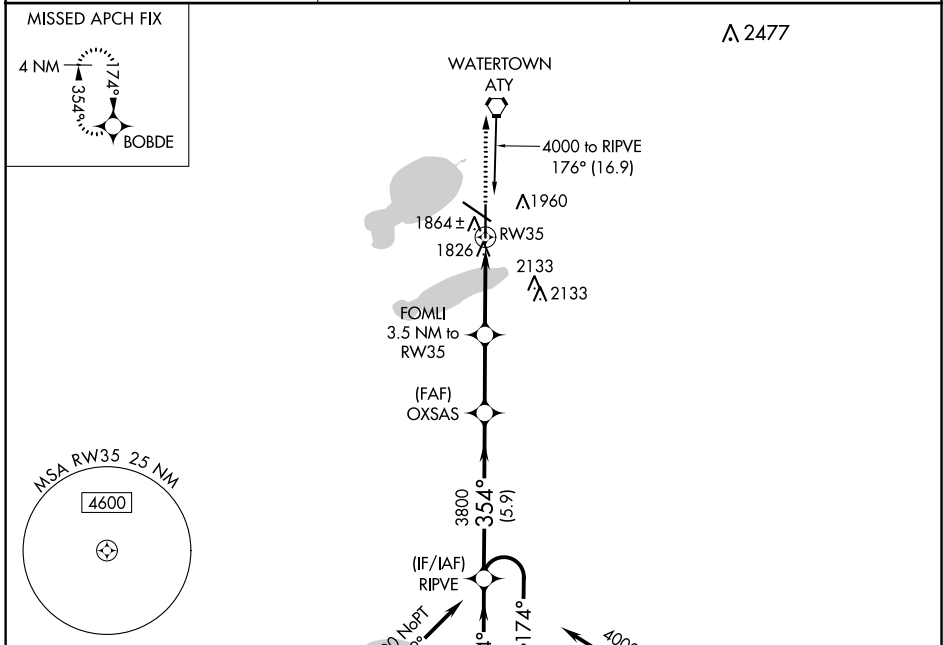
WAAS CH 82614 W35A	APP CRS 354°	Rwy Idg TDZE Apt Elev	6893 1745 1749
---------------------------------	------------------------	-----------------------------	---

RNAV (GPS) RWY 35

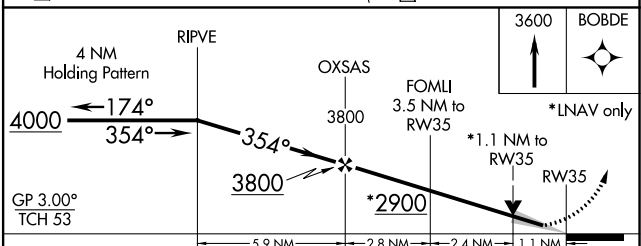
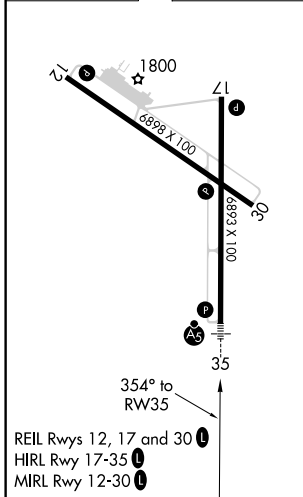
WATERTOWN RGNL (ATY)

▽ ▲	For uncompensated Baro-VNAV systems, LNAV/VNAV NA below -21°C (-5°F) or above 54°C (130°F). DME/DME RNP -0.3 NA. For inop ALS, increase LNAV Cat C/D visibility to 1½ SM.	MALSR 	MISSED APPROACH: Climb to 3600 direct BOBDE and hold.
----------------------	---	-----------	---

ASOS 126.625	MINNEAPOLIS CENTER 128.5 306.2	UNICOM 123.05 (CTAF) 0
------------------------	--	----------------------------------



ELEV 1749	D	TDZE 1745
-----------	----------	-----------



CATEGORY	A	B	C	D
LPV DA	1945-½		200 (200-½)	
LNAV/VNAV DA	2180-1		435 (500-1)	
LNAV MDA	2160-½	415 (500-½)	2160-¾	415 (500-¾)
C CIRCLING	2260-1	511 (600-1)	2500-2¼ 751 (800-2¼)	2500-2½ 751 (800-2½)

NC-1, 22 APR 2021 to 20 MAY 2021

NC-1, 22 APR 2021 to 20 MAY 2021