

VORTAC ATY <b>116.6</b> Chan <b>113</b>	APP CRS <b>177°</b>	Rwy Idg TDZE <b>1741</b> Apt Elev <b>1749</b>	<b>6893</b>
---	------------------------	---	-------------

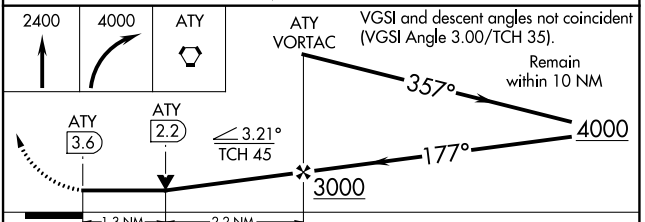
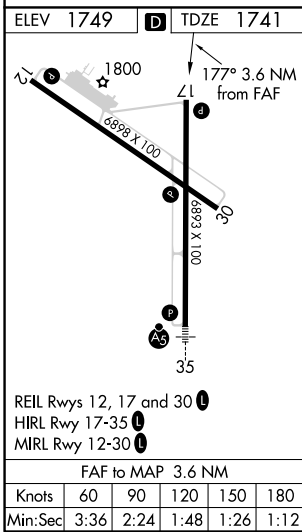
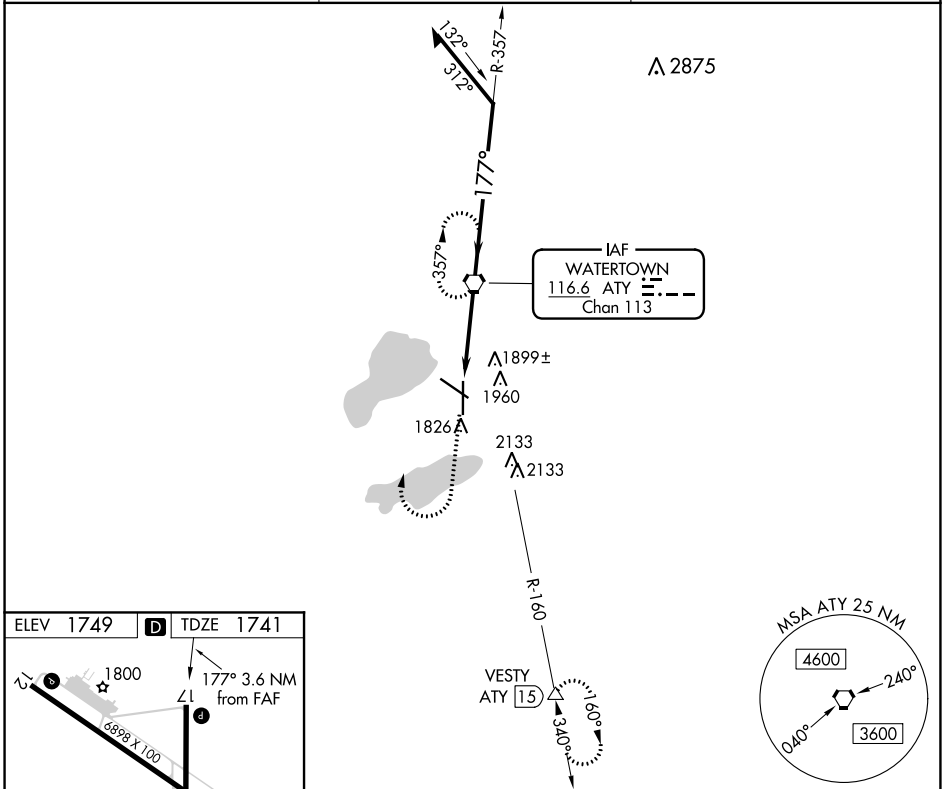
# VOR or TACAN RWY 17

WATERTOWN RGNL (ATY)

**⚠** Rwy 17 helicopter visibility reduction below 3/4 SM NA.  
When local altimeter setting not received, use Brookings altimeter setting and increase all MDAs 120 feet; increase Circling Cat C and D visibility 1/4 SM. VDP NA when using Brookings altimeter setting.

**MISSED APPROACH:** Climb to 2400 then climbing right turn to 4000 direct ATY VORTAC and hold. (TACAN aircraft climb to 5000 on ATY VORTAC R-160 to VESTY/15 DME and hold south, right turn, 340° inbound.)

ASOS <b>126.625</b>	MINNEAPOLIS CENTER <b>128.5 306.2</b>	UNICOM <b>123.05 (CTAF)</b>
------------------------	--	--------------------------------



CATEGORY	A	B	C	D
S-17	2200-1	460 (500-1)	2200-1 1/4 460 (500-1 1/4)	2200-1 1/2 460 (500-1 1/2)
<b>C</b> CIRCLING	2260-1	511 (600-1)	2500-2 1/4 751 (800-2 1/4)	2500-2 1/2 751 (800-2 1/2)

NC-1, 22 APR 2021 to 20 MAY 2021

NC-1, 22 APR 2021 to 20 MAY 2021