

WAAS CH 69232 W34A	APP CRS 319°	Rwy Idg 3421 TDZE 14 Apt Elev 14
--	------------------------	---

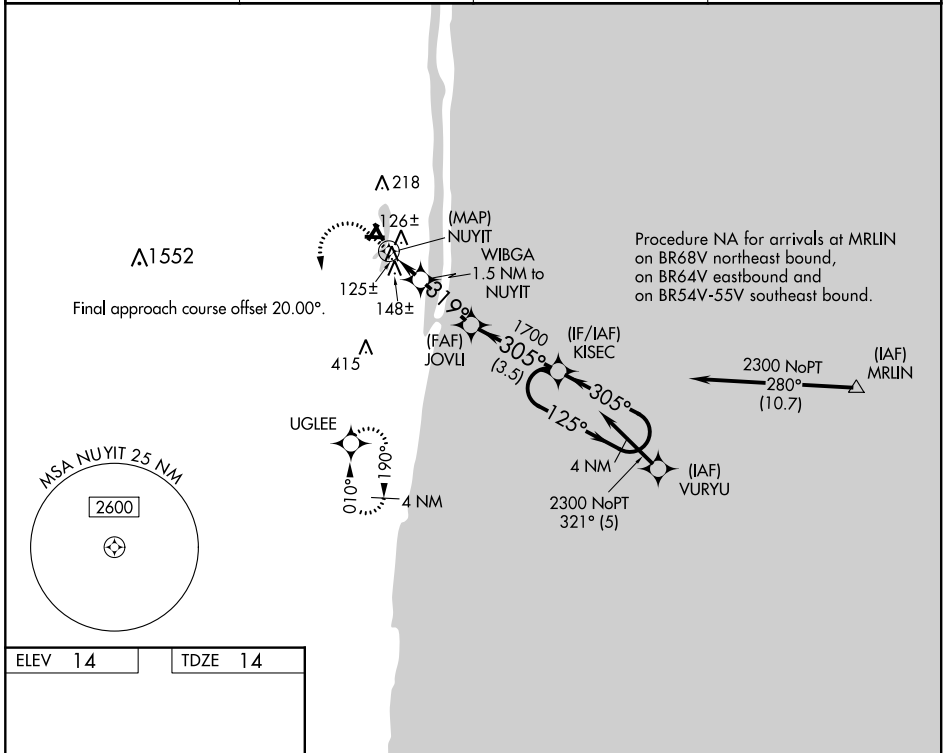
RNAV (GPS) RWY 34

PALM BEACH COUNTY PARK (L.N.A)

▼ DME/DME RNP-0.3 NA. Rwy 34 helicopter visibility reduction below 1 SM NA. Circling to Rwys 4, 16, 22, 28 NA at night. Straight-in Rwy 34 NA at night, Circling Rwy 34 NA at night.

MISSED APPROACH: (Do not exceed 200K until UGLEE) Climb to 700 then climbing left turn to 2000 direct UGLEE and hold.

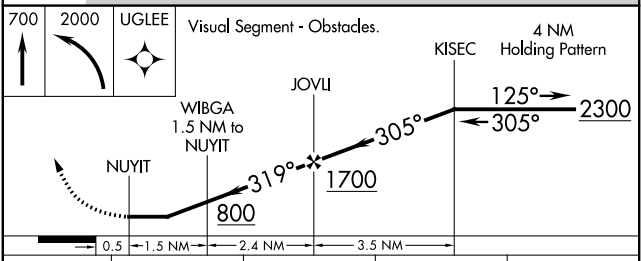
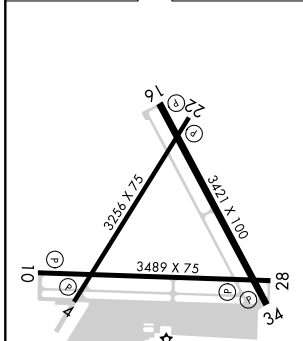
AWOS-3PT 119.925	PALM BEACH APP CON 125.2 343.6	CINC DEL 127.35	UNICOM 122.7 (CTAF) 0
----------------------------	--	---------------------------	---------------------------------



SE-3, 22 APR 2021 to 20 MAY 2021

SE-3, 22 APR 2021 to 20 MAY 2021

ELEV 14	TDZE 14
---------	---------



CATEGORY	A	B	C	D
LP MDA	380-1 366 (400-1)			NA
LNAV MDA	400-1	386 (400-1)	400-1 ¹ / ₈ 386 (400-1 ¹ / ₈)	NA
C CIRCLING	460-1 446 (500-1)	520-1 506 (600-1)	580-1 ¹ / ₂ 566 (600-1 ¹ / ₂)	NA